

**PRYOR PUBLIC SCHOOLS
PRYOR JR HIGH SHELTER
ADDITION**

Owner:
Independent School District No. 1
Mayes County
Pryor, Oklahoma

Architect: The Stacy Group
Project Number: 1803

10.18.2019



a
d
d
e
n
d
u
m

n
o
.
t
w
o

addendum number: TWO (2)
date: 10.18.2019
project: PRYOR PUBLIC SCHOOLS
Junior High Shelter Addition
PRYOR, OK
project number: 1803
architect: The Stacy Group
8091 N. Owasso Expressway
Owasso, OK 74055
(918) 272-2622
f (918) 272-2633

To: Prospective Bidders

This Addendum forms a part of the Contract Documents and modifies the original Bidding Documents dated **September 17, 2019**, as noted below. Acknowledge receipt of this Addendum in the space provided on the Bid Form. Failure to do so may subject Bidder to disqualification.

Clarifications:

- A2-1 All testing should be included in base bid, no testing allowance to be provided as referenced in pre-bid conference packet.
- A2-2 Interior Wall Panel (WP1) correct size is 4'-6" W x 8'-0".
- A2-3 Electrical – Speakers and hi-bay light fixtures in the gymnasium must have white housings.

Pre-Qualifications:

- A2-4 **Section 064023 Interior Architectural Woodwork:** Manufacturer listed below is approved in name only and must still meet all requirements as listed in the specification in order to bid and supply products for this project specifications:
Millennium Millworks
- A2-5 **Section 096466 Wood Athletic Flooring** Manufacturer listed below is approved in name only and must still meet all requirements as listed in the specification in order to bid and supply products for this project specifications: **Horner Flooring Company**
- A2-6 **Section 221119 Domestic Water Piping Specialties:** Manufacturer listed below is approved in name only and must still meet all requirements as listed in the specification in order to bid and supply products for this project specifications:
Temperature Limiting Valve – Acorn
- A2-7 **Section 224000 Plumbing fixtures:** Manufacturer listed below is approved in name only and must still meet all requirements as listed in the specification in order to bid and supply products for this project specifications:
Shower Trim – Acorn

A2-8 **Sections 265119 LED Interior Lighting and 265619 LED Exterior Lighting:** Manufacturers listed below are approved in name only and must still meet all requirements as listed in the specification in order to bid and supply products for this project specifications:

DL4W – Halo – HC4/HM4
FP22 – Metalux – 22FP
FP24/EM – Metalux – 24FP
HIB – Metalux – VHB LED
NRL4.6 – Neo-Ray – Define 2
RL2 – Neo-Ray – Define 4
RL4 – Neo-Ray – Define 4
SL4EM – Metalux – 4SNLED
STP15 – Cole Lighting – Steplites L500 Series
STR4WLEM – a•light – D3 Series
WSL2/3/4/EM – a•light – D3 Series
Exit Signs – Exitronix – S900 Series

Specifications:

- A2-9 **Section 034100 Precast structural Concrete:** Change article 2.5, A, 1 to read “For surfaces exposed to view in finished structure, mix gray with white cement, of same type, brand and mill source to maintain consistent color and tone. Coordinate color and tone with Architect.”
- A2-10 **Section 051200 Structural Steel Framing:** Change article 1.6 Allowance to read “...2,000 pounds of miscellaneous steel...” (This is to match the requirement in note 10 of the structural steel section of the general notes on sheet S001.)
- A2-11 **Section 083940 Severe Weather (Tornado) Door System:** Remove section 2.05 Door Hardware and section 3.05 Hardware Schedules.

Drawings:

General: None

Civil: None

Architectural: None

Interiors: None

Structural: None

Mechanical: None

Plumbing:

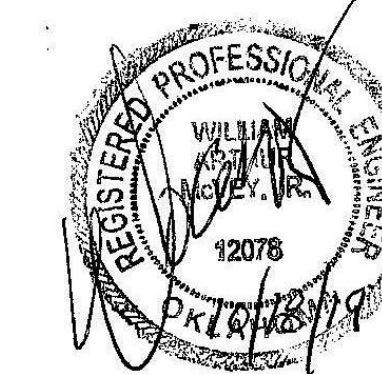
- A2-12 **Sheet P301 Plumbing Fixture Schedule:** Revise TPS mounting to counter in lieu of wall.

Electrical:

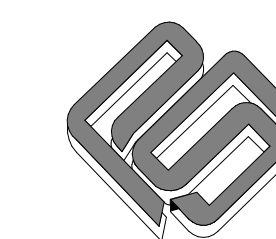
- A2-13 **Sheet E201 Lighting Plan:** Revise emergency lighting requirements in Lobby 103.
- A2-14 **Sheet E501 Fire Alarm Plan:** Add exterior horn strobe on exterior of riser room to identify FDC. Add note requiring monitor modules w/ a visual indicator for each tamper switch.

A2-15 Sheet E600 Electrical Riser and Schedules: Revise light fixture schedule, ref clouded portions. Revise voltages for panels L2A and SSLA in electrical riser to match the voltages identified in their panel schedules.

END OF ADDENDUM



Copyright © the stacy.group

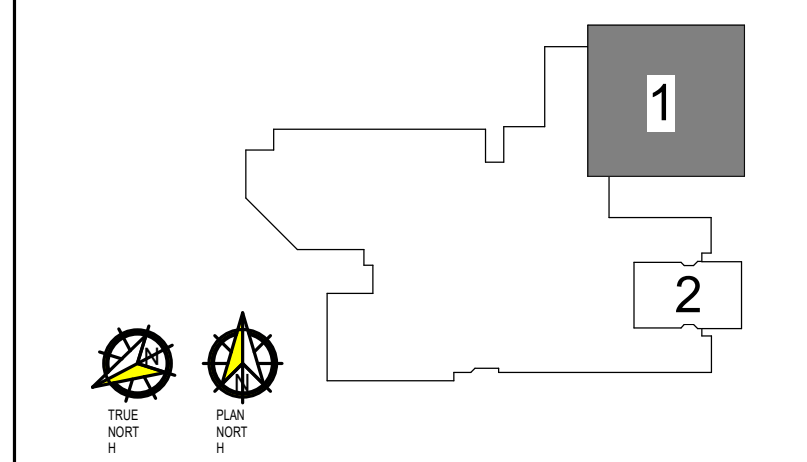


PSA CONSULTING ENGINEERS, INC.

3031 N.W. 64TH STREET SUITE 101
OKLAHOMA CITY, OKLAHOMA 73116
(405) 840-1901 FAX (405) 840-1916
COA # 390 - RENEWAL DATE 6/30/2019

PRYOR JR.
HIGH

PRYOR PUBLIC
SCHOOLS
PRYOR, OKLAHOMA
2019



PROJECT

1

REVISIONS		
#	DESCRIPTION	DATE
1	ADD 01	10-11-19
2	ADD 02	10-18-19

09.17.19

LIGHTING
PLAN

E201

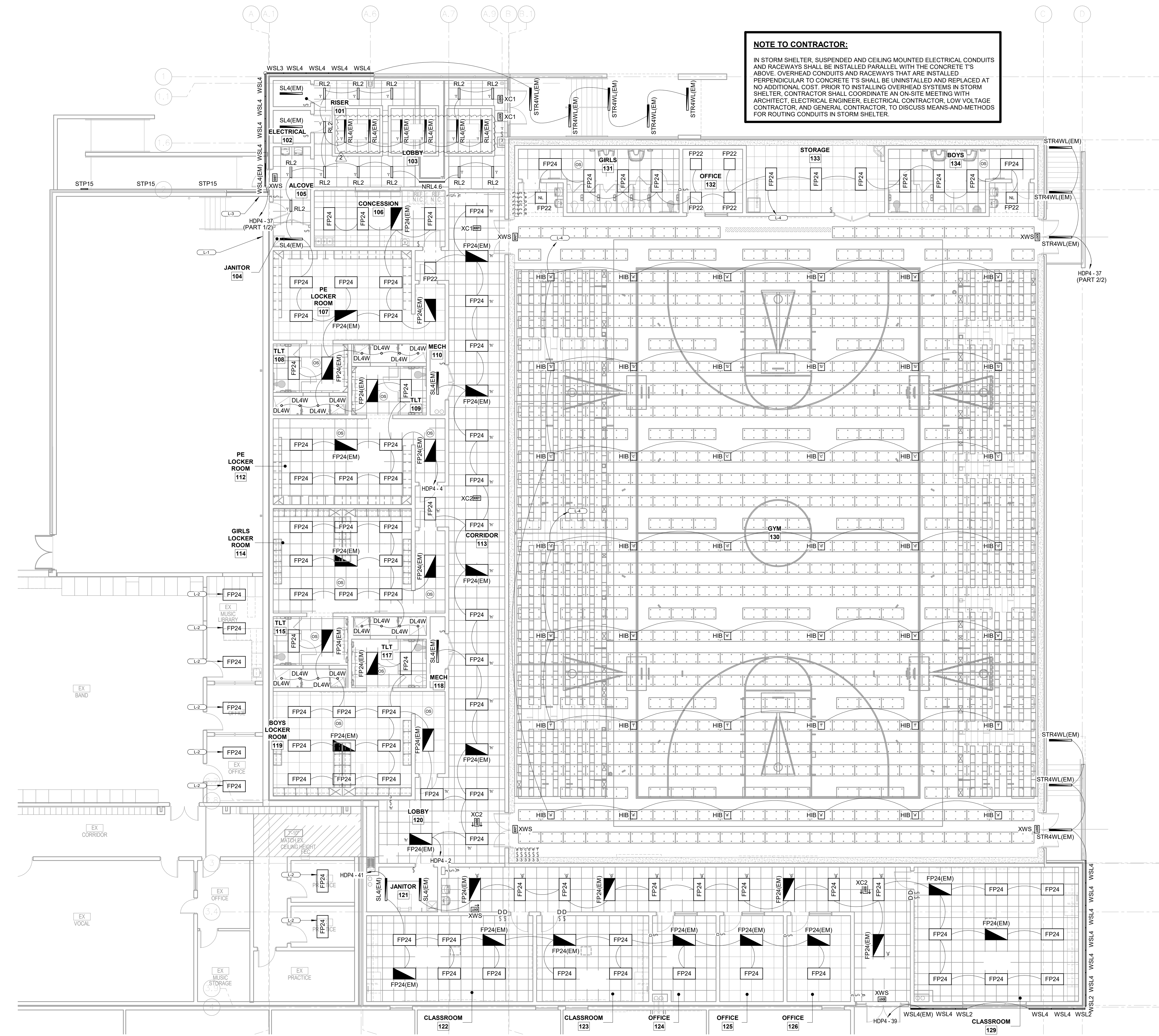
LIGHTING KEYNOTES

(NOT ALL KEYNOTES USED ON EVERY SHEET)

- L-1 REINSTALL EXISTING EXIT SIGN IN NEW LOCATION ADJACENT TO NEW ENTRY/EXIT. REF DEMO PLANS. EXTEND EXISTING EXIT SIGN CIRCUITRY TO NEW LOCATION.
- L-2 1-FOR-1 REPLACEMENT WITH EXISTING LIGHT FIXTURE BEING DEMOLISHED. CONNECT TO EXISTING CIRCUITRY AND CONTROLS. REF DEMO PLANS.
- L-3 REINSTALL EXISTING LIGHTING CONTROLS IN NEW LOCATION. REF DEMO PLANS.
- L-4 USE #10 AWG AND 20A-1P BREAKER TO POWER THROUGH STORM SHELTER INVERTER AT 277V.

NOTE TO CONTRACTOR:

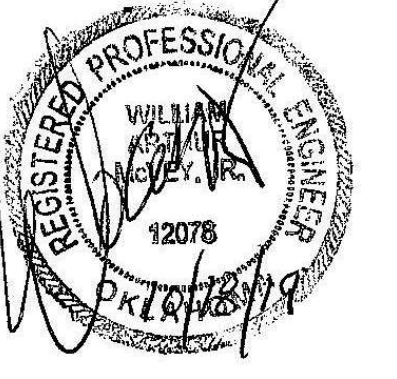
IN STORM SHELTER, SUSPENDED AND CEILING MOUNTED ELECTRICAL CONDUITS AND RACEWAYS SHALL BE INSTALLED PARALLEL WITH THE CONCRETE T'S ABOVE. OVERHEAD CONDUITS AND RACEWAYS THAT ARE INSTALLED PERPENDICULAR TO CONCRETE T'S SHALL BE UNINSTALLED AND REPLACED AT NO ADDITIONAL COST. PRIOR TO INSTALLING OVERHEAD SYSTEMS IN STORM SHELTER, CONTRACTOR SHALL COORDINATE AN ON-SITE MEETING WITH ARCHITECT, ELECTRICAL ENGINEER, ELECTRICAL CONTRACTOR, LOW VOLTAGE CONTRACTOR, AND GENERAL CONTRACTOR, TO DISCUSS MEANS-AND-METHODS FOR ROUTING CONDUITS IN STORM SHELTER.



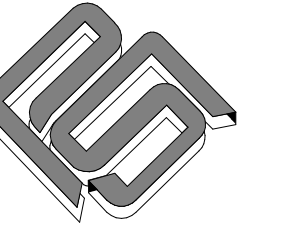
1 LIGHTING - AREA 1
1/8" = 1'-0"

10/18/19
10/18/19
10/18/19

These drawings are subject to copyright protection as an "architectural work" under Section 102 of the Copyright Act, 17 U.S.C., as amended on December 1, 1990. The work includes the overall form as well as the arrangement and composition of spaces and elements in the design. These documents are not to be reproduced without the written consent of the stacy.group.



Copyright © the stacy.group



PSA CONSULTING ENGINEERS, INC.

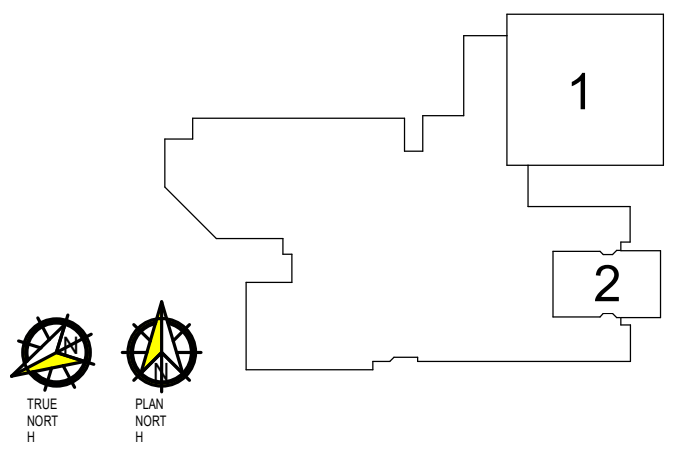
3031 N.W. 64TH STREET SUITE 101
OKLAHOMA CITY, OKLAHOMA 73116
(405) 840-1901 FAX (405) 840-1916
COA # 390 - RENEWAL DATE 6/30/2019

PRYOR JR. HIGH

PRYOR PUBLIC SCHOOLS

PRYOR, OKLAHOMA
2019

PROJECT



KEY PLAN

PROJECT

1

REVISIONS		
#	DESCRIPTION	DATE
2	ADD 02	10-18-19

REVISIONS

09.17.19

ISSUE DATE

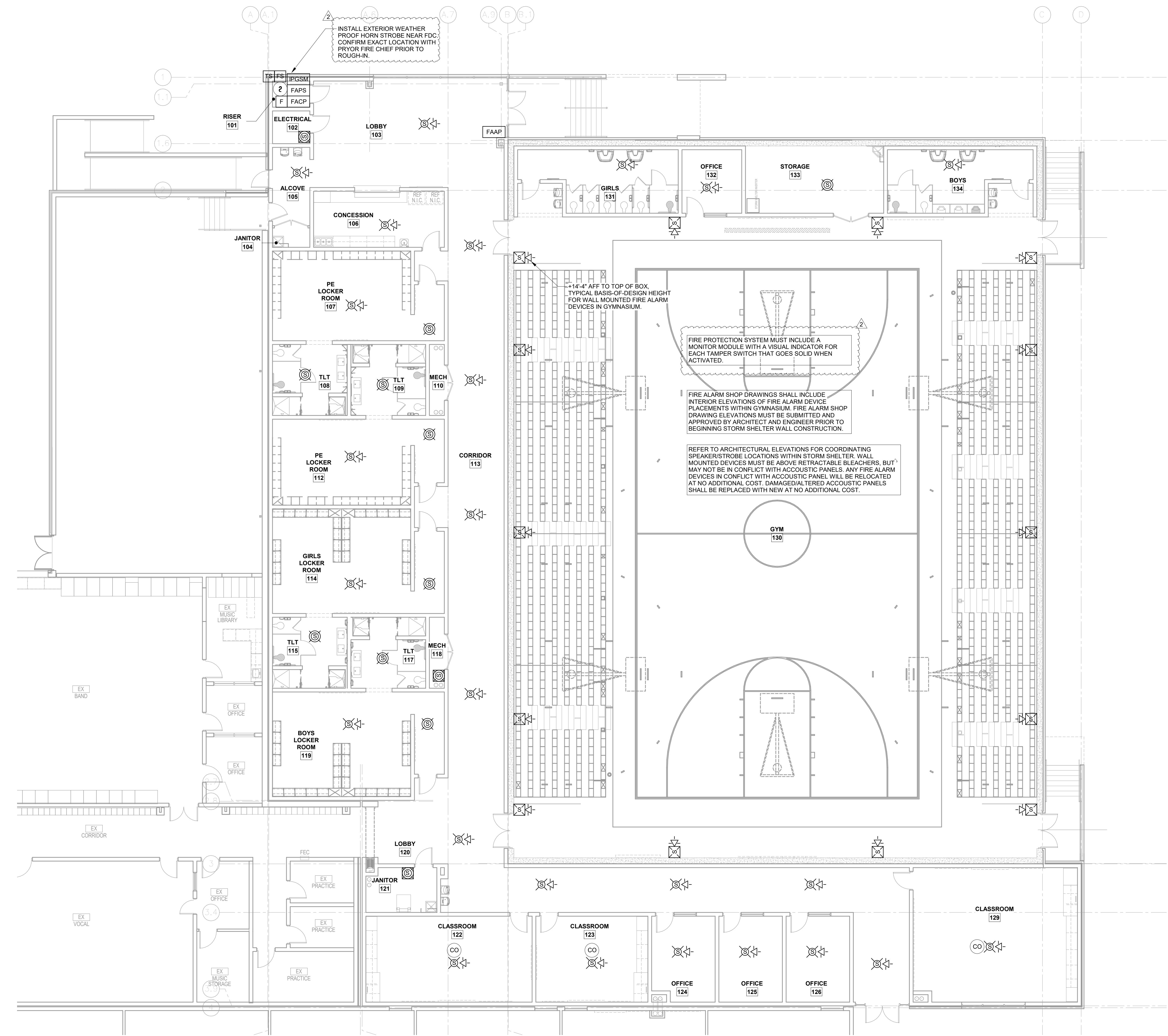
PROJECT NO
W/C
DRAWN BY
C/C

FIRE ALARM PLAN

E501

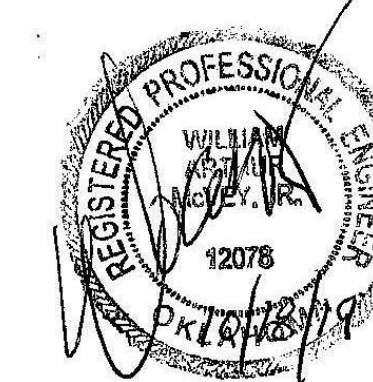
SHEET TITLE

These drawings are subject to copyright protection as an "architectural work" under Section 102 of the Copyright Act, 17 U.S.C., as amended on December 1, 1990. The work includes the overall form as well as the arrangement and composition of spaces and elements in the design. These documents are not to be reproduced without the written consent of the stacy.group.

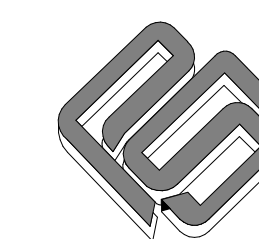


1 Fire - Level 01 - Area 1
1/8" = 1'-0"

1/8" = 1'-0"
1/4" = 1'-0"
1/2" = 1'-0"
3/4" = 1'-0"
1" = 1'-0"
1 1/4" = 1'-0"
1 1/2" = 1'-0"
1 3/4" = 1'-0"
2" = 1'-0"
2 1/4" = 1'-0"
2 1/2" = 1'-0"
2 3/4" = 1'-0"
3" = 1'-0"
3 1/4" = 1'-0"
3 1/2" = 1'-0"
3 3/4" = 1'-0"
4" = 1'-0"
4 1/4" = 1'-0"
4 1/2" = 1'-0"
4 3/4" = 1'-0"
5" = 1'-0"
5 1/4" = 1'-0"
5 1/2" = 1'-0"
5 3/4" = 1'-0"
6" = 1'-0"
6 1/4" = 1'-0"
6 1/2" = 1'-0"
6 3/4" = 1'-0"
7" = 1'-0"
7 1/4" = 1'-0"
7 1/2" = 1'-0"
7 3/4" = 1'-0"
8" = 1'-0"
8 1/4" = 1'-0"
8 1/2" = 1'-0"
8 3/4" = 1'-0"
9" = 1'-0"
9 1/4" = 1'-0"
9 1/2" = 1'-0"
9 3/4" = 1'-0"
10" = 1'-0"
10 1/4" = 1'-0"
10 1/2" = 1'-0"
10 3/4" = 1'-0"
11" = 1'-0"
11 1/4" = 1'-0"
11 1/2" = 1'-0"
11 3/4" = 1'-0"
12" = 1'-0"
12 1/4" = 1'-0"
12 1/2" = 1'-0"
12 3/4" = 1'-0"
13" = 1'-0"
13 1/4" = 1'-0"
13 1/2" = 1'-0"
13 3/4" = 1'-0"
14" = 1'-0"
14 1/4" = 1'-0"
14 1/2" = 1'-0"
14 3/4" = 1'-0"
15" = 1'-0"
15 1/4" = 1'-0"
15 1/2" = 1'-0"
15 3/4" = 1'-0"
16" = 1'-0"
16 1/4" = 1'-0"
16 1/2" = 1'-0"
16 3/4" = 1'-0"
17" = 1'-0"
17 1/4" = 1'-0"
17 1/2" = 1'-0"
17 3/4" = 1'-0"
18" = 1'-0"
18 1/4" = 1'-0"
18 1/2" = 1'-0"
18 3/4" = 1'-0"
19" = 1'-0"
19 1/4" = 1'-0"
19 1/2" = 1'-0"
19 3/4" = 1'-0"
20" = 1'-0"



Copyright © the stacy.group



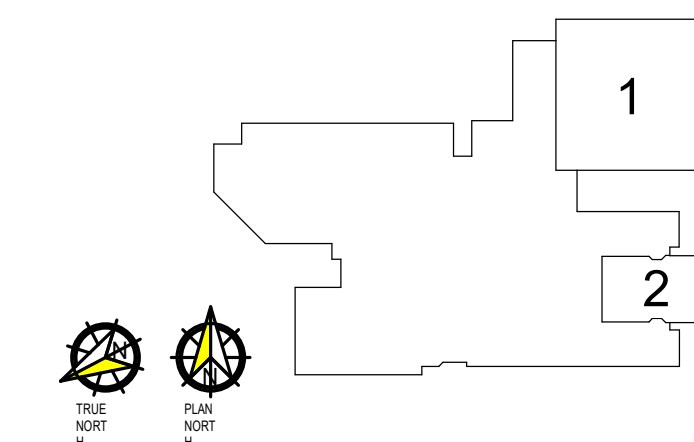
PSA CONSULTING ENGINEERS, INC.

3031 N.W. 64TH STREET SUITE 101
OKLAHOMA CITY, OKLAHOMA 73116
(405) 840-1901 FAX (405) 840-1916
COA # 390 - RENEWAL DATE 6/30/2019

PRYOR JR. HIGH

PRYOR PUBLIC SCHOOLS

PRYOR, OKLAHOMA 2019



KEY PLAN

PROJECT

1

REVISIONS		
#	DESCRIPTION	DATE
1	ADD 01	10-11-19
2	ADD 02	10-18-19

09.17.19

ISSUE DATE

PROJECT NO

W/C

DRAWN BY

CHKD BY

ELECTRICAL RISER AND SCHEDULES

E600

SHEET TITLE

These drawings are subject to copyright protection as an "architectural work" under Section 102 of the Copyright Act, 17 U.S.C., as amended on December 1, 1990. The work includes the overall form as well as the arrangement and composition of spaces and elements in the design. These documents are not to be reproduced with the written consent of the stacy.group.

TYPE	DESCRIPTION	MAKE	MODEL	LOAD	VOLTAGE	DIMMING	TYPE COMMENTS
DL4W	4" RECESSED DOWNLIGHT W/ WET LISTING	SPECTRUM	SGE45QLEDOS-20L-35K-DS10-2-EMIT / CA0240S-MW-SO-GS-EMIT	20 VA	277 V	0-10V	
FP22	2x2 FLAT PANEL	H.E. WILLIAMS	LP-2-2-L40-8-35	39 VA	277 V	0-10V	
FP24	2x4 FLAT PANEL	H.E. WILLIAMS	LP-2-4-L50-8-35	48 VA	277 V	0-10V	
FP24(EM)	2x4 FLAT PANEL W/ EM BACKUP	H.E. WILLIAMS	LP-2-4-L50-8-35-EM10WRM	48 VA	277 V	0-10V	
HI8	HI-BAY	GE	ABV3418T471Dxxxxxx-120-277V	109 VA	277 V	0-10V	
NRL4.0	4.0" NARROW RECESSED LINEAR	FOCAL POINT	FSM1-PD05-375LF-35K-1C-120-11-CXX-WH4FT	35 VA	277 V	0-10V	
RL2	2" RECESSED LINEAR	FOCAL POINT	FSM4L-FL-375LF-35K-1C-UNV-XXX-2	20 VA	277 V	0-10V	
RL4(EM)	4" RECESSED LINEAR W/ EM BACKUP	FOCAL POINT	FSM4L-FL-375LF-35K-1C-UNV-XXX-4-EM	20 VA	277 V	0-10V	
SL4(EM)	4" SUSPENDED LINEAR W/ EM BACKUP	H.E. WILLIAMS	75R-4-L30-8-35-EM10WLP-VBY-2-DRV-277V	20 VA	277 V	N/A	
STP15	15" SUSPENDED STEP LIGHT	INSIGHT	QD-6-40K-XX-15-INT2-TN-WL	20 VA	277 V	0-10V	
STR4W(EM)	4" SUSPENDED LINEAR W/ WET LISTING & EM BACKUP	FORUM	AQD64-75LED40-SAT-HXX-6-UNV-CC(RAL5013)-D10V (EMLED)	22 VA	277 V	0-10V	
WLS2	2" WALL SURFACE LINEAR W/ WET LISTING	FORUM	AQD32-65LED40-W-X-UNV-SV	35 VA	277 V	0-10V	
WLS3	3" WALL SURFACE LINEAR W/ WET LISTING	FORUM	AQD32-65LED40-W-X-UNV-SV	35 VA	277 V	0-10V	
WLS4	4" WALL SURFACE LINEAR W/ WET LISTING	FORUM	AQD32-65LED40-W-X-UNV-SV	35 VA	277 V	0-10V	
WLS4(EM)	4" WALL SURFACE LINEAR W/ WET LISTING & EM BACKUP	FORUM	AQD32-65LED40-W-X-UNV-SV	35 VA	277 V	0-10V	
XC1	EXIT SIGN, CEILING MOUNT, SINGLE FACE	MULE	ELX-1-B-RC-R-BA-SD	5 VA	277 V	N/A	PROVIDE CHEVRONS AS INDICATED ON LIGHTING PLANS
XC2	EXIT SIGN, CEILING MOUNT, DOUBLE FACE	MULE	ELX-2-B-RM-R-BA-SD	5 VA	277 V	N/A	PROVIDE CHEVRONS AS INDICATED ON LIGHTING PLANS
XWS	EXIT SIGN, WALL SURFACE MOUNT	MULE	ELX-1-B-RC-U-BA-SD	5 VA	277 V	N/A	PROVIDE CHEVRONS AS INDICATED ON LIGHTING PLANS

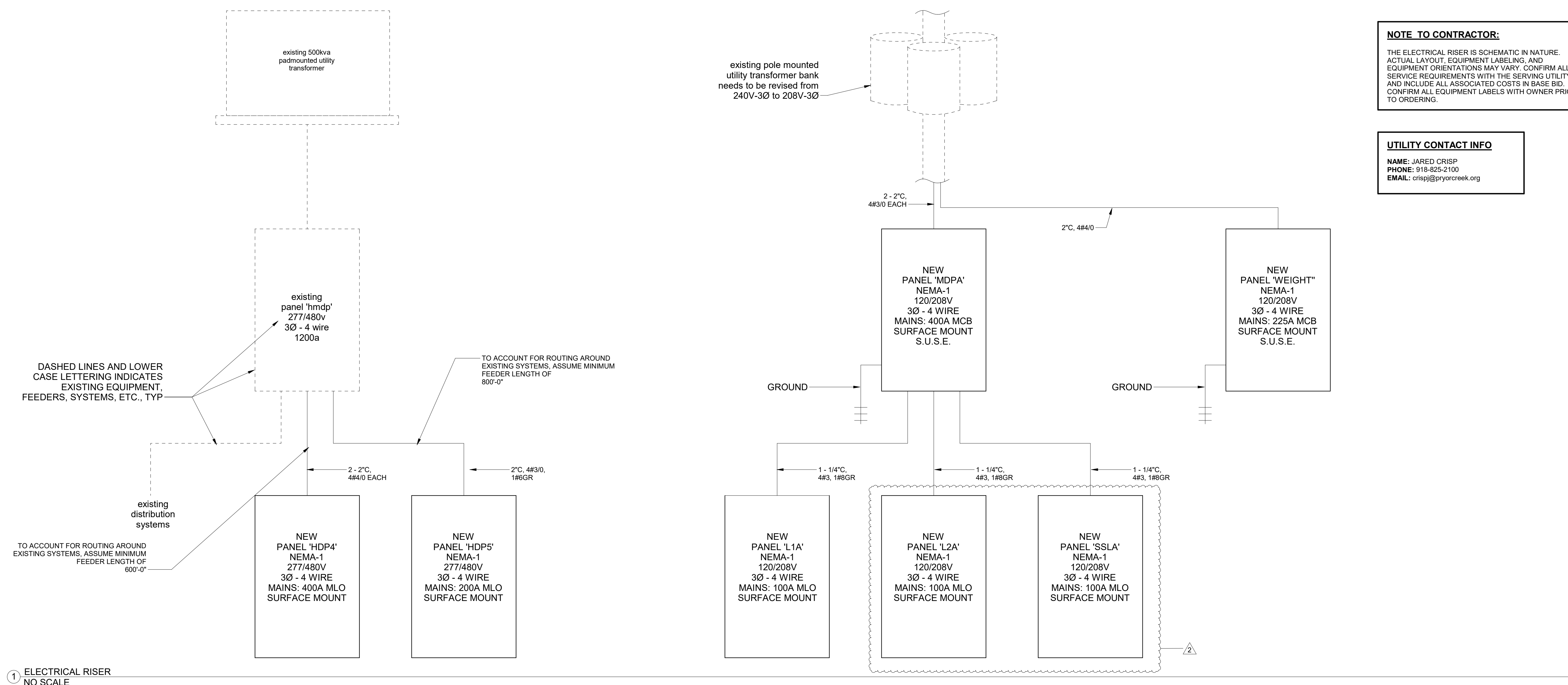
LIGHT FIXTURE SCHEDULE NOTES

- CONTRACTOR SHALL CONFIRM ALL FIXTURE FINISH OPTIONS WITH ARCHITECT PRIOR TO ORDERING.
- CONTRACTOR IS RESPONSIBLE FOR CONFIRMING FINAL MOUNTING REQUIREMENTS FOR ALL FIXTURES AND PROVIDING AS REQUIRED. INCLUDE ALL ASSOCIATED COSTS IN BASE BID.
- LIGHT FIXTURE SUBSTITUTION REQUESTS MUST SUBMITTED FOR REVIEW AT LEAST (10) BUSINESS DAYS PRIOR TO THE CLOSE OF BID. LIGHTING SUBSTITUTION REQUESTS SUBMITTED LESS THAN (10) BUSINESS DAYS BEFORE THE CLOSE OF BIDDING WILL NOT BE CONSIDERED. LIGHT FIXTURES THAT ARE NOT APPROVED BY ADDENDUM, WILL NOT BE ALLOWED.
- CONTRACTOR SHALL PROVIDE ALL FIXTURE OPTIONS AND ACCESSORIES AS REQUIRED TO MEET DESIGN INTENT, EVEN IF NOT SPECIFICALLY IDENTIFIED IN THE LIGHT FIXTURE TYPE'S MODEL NUMBER. INCLUDE ALL ASSOCIATED COSTS IN BASE BID.

TYPE	CONNECTIONS	FINISHES
FBG1	(2) 20A DUPLEX, (2) CAT6 NETWORK, (1) CAT6 CONNECTION TO SCOREBOARD	HINGED BLACK COVER, FLUSH WITH FINISHED FLOOR, NO CUTOFF
FBSC1	(1) 20A DUPLEX, (2) CAT6 NETWORK	HINGED BLACK COVER, FLUSH WITH FINISHED FLOOR, NO CUTOFF

TYPE	CONNECTIONS	DESCRIPTION
WP1	(2) CAT6 NETWORK	TYPICAL NETWORK DATA DROP
WP2	VGA VIDEO FROM TEACHER'S DESK	TYPICAL CLASSROOM OVERHEAD PROJECTOR
WP3	(1) CAT6 NETWORK, (1) CAT6 FROM TEACHER'S DESK	TYPICAL CLASSROOM INTERACTIVE TEACHING PANEL CONNECTIONS ARE WITHIN COMBINATION T.V. BOX, REF POWER PLANS. INSTALL OWNER FURNISHED CAT6-to-USB ADAPTER FOR INTERACTIVE TOUCH + SOUND
WP4	(2) CAT6 NETWORK, VGA VIDEO TO OVERHEAD PROJECTOR, CAT6 FOR INTERACTIVE TOUCH + SOUND TO INTERACTIVE TEACHING PANEL	TYPICAL TEACHER'S DESK, PROVIDE FEMALE RJ45 RECEPTACLES FOR CAT6 NETWORK CONNECTIONS, PROVIDE OPEN PASS-THRU FOR AV CONNECTIONS, INSTALL DISTRICT PROVIDED CAT6-to-USB ADAPTER FOR INTERACTIVE TOUCH + SOUND
WP5	REF POWER PLANS AND PROVIDE CONNECTIONS AS REQUIRED	SERVES EXISTING EQUIPMENT BEING RE-INSTALLED
WP6	REF ELECTRICAL DETAILS	GYM AV SYSTEM

SYSTEM	JACKET COLOR	NOTES
BUILDING AUTOMATION	YELLOW	
CAMERAS	PURPLE	
DATA	BLUE	USE SINGLE MODE FIBER TO BRIDGE BETWEEN I.T. RACKS, CLOSETS, ROOMS, ETC. UON, USE 6-STRAND FIBER FOR NEW I/2 RACKS, AND 12-STRAND FIBER FOR NEW FULL HEIGHT RACKS.
FIRE	RED	
GROUNDING	GREEN	
INTERCOM	GRAY	
SECURITY	BLACK	
VOICE	WHITE	
WIRELESS ACCESS POINTS	ORANGE	



NOTE TO CONTRACTOR:
THE ELECTRICAL RISER IS SCHEMATIC IN NATURE. ACTUAL LAYOUT, EQUIPMENT LABELING, AND EQUIPMENT ORIENTATIONS MAY VARY. CONFIRM ALL SERVICE REQUIREMENTS WITH THE SERVING UTILITY AND INCLUDE ALL ASSOCIATED COSTS IN BASE BID. CONFIRM ALL EQUIPMENT LABELS WITH OWNER PRIOR TO ORDERING.

UTILITY CONTACT INFO
NAME: JARED CRISP
PHONE: 918-825-2100
EMAIL: crispj@pryorcreek.org

1 ELECTRICAL RISER NO SCALE