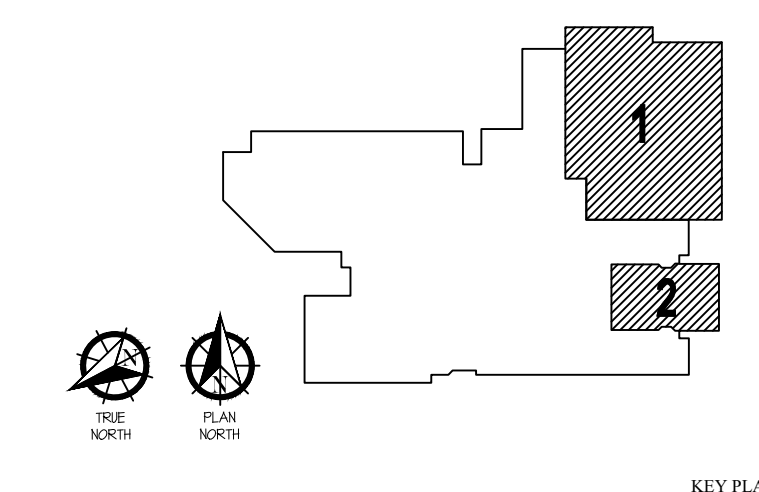


Copyright © the.stacy.group

JUNIOR HIGH
SHELTER
ADDITION

PRYOR PUBLIC
SCHOOLS
PRYOR, OK
2019

PROJECT



KEY PLAN

09.17.19

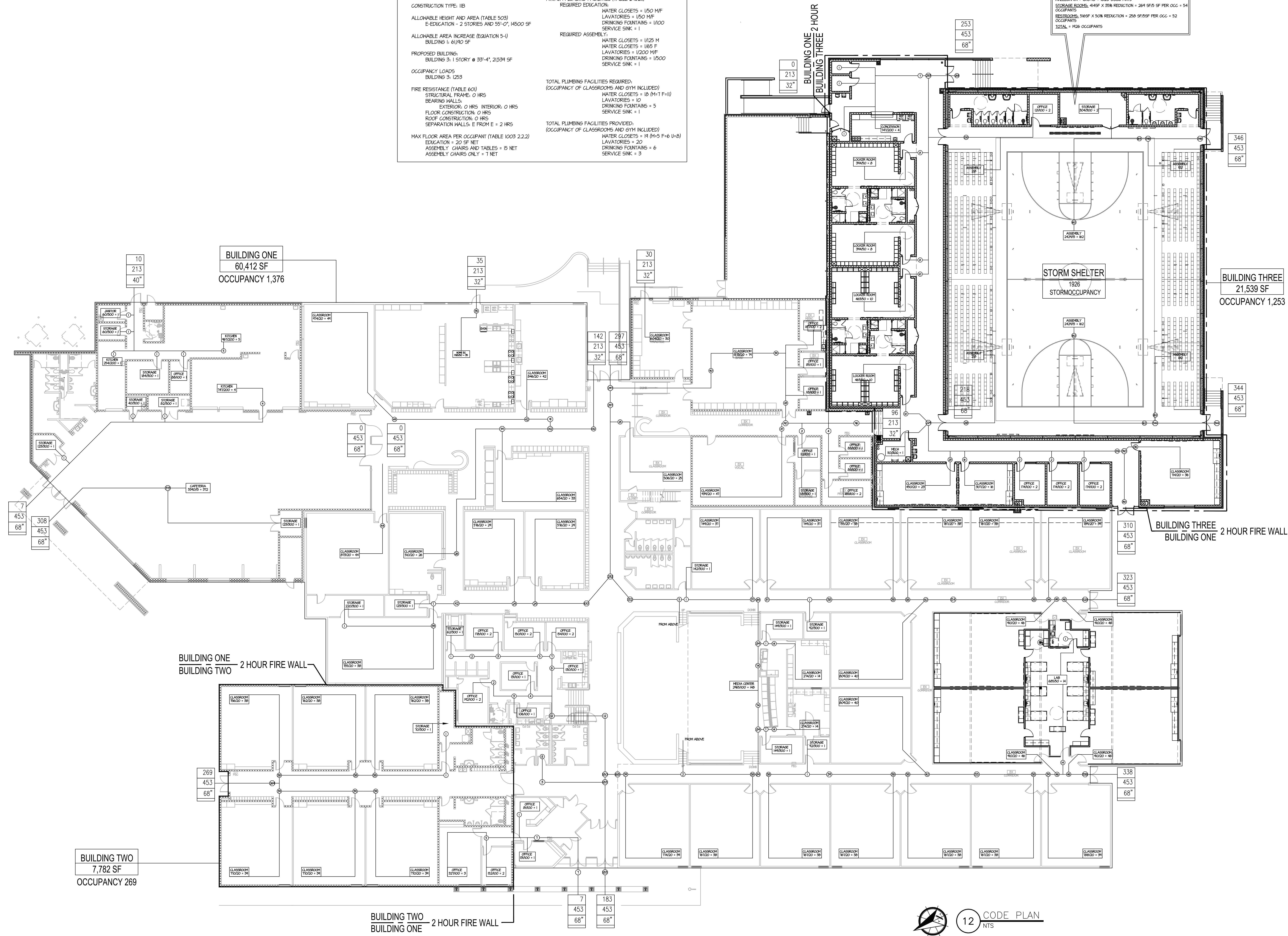
CODE SHEET

G100

These drawings are subject to copyright protection as an "architectural work" under Section 102 of the Copyright Act, 17 U.S.C., as amended on December 1, 1990. The work includes the overall form as well as the arrangement and composition of space and elements in the design. These documents are not to be reproduced without the written consent of the.stacy.group.

CODE STUDY:	
APPLICABLE CODES:	EGRESS WIDTH PER OCCUPANT (TABLE 1005.1) NON-SPRINKLER SYSTEM STAIRWAYS = 0.2' PER OCCUPANT (NOT APPLICABLE) OTHER = 0.15 PER OCCUPANT
INTERNATIONAL BUILDING CODE 2015	BUILDING I: EXIT WIDTH REQUIRED = 18"
LIFE SAFETY CODE 2015	EXIT WIDTH PROVIDED = 304"
INTERNATIONAL PLUMBING CODE 2015	
INTERNATIONAL MECHANICAL CODE 2015	EXIT ACCESS TRAVEL DISTANCE (TABLE 1004.2.4) FOR EDUCATION OCCUPANCY WITHOUT SPRINKLER SYSTEM = 200 FT
NATIONAL ELECTRIC CODE 2015	
OCCUPANCY TYPE: E - EDUCATION	MINIMUM PLUMBING FACILITIES (TABLE 2402.1) REQUIRED EDUCATION:
CONSTRUCTION TYPE: IIB	WATER CLOSETS = 1/50 M/F LAVATORIES = 1/50 M/F DRINKING FOUNTAINS = 1/100 SERVICE SINK = 1
ALLOWABLE HEIGHT AND AREA (TABLE 503) E-EDUCATION - 2 STORIES AND 55'-0", 14500 SF	REQUIRED ASSEMBLY:
ALLOWABLE AREA INCREASE (EQUATION 5-1) BUILDING I: 61/10 SF	WATER CLOSETS = 1/25 M WATER CLOSETS = 1/65 F LAVATORIES = 1/200 M/F DRINKING FOUNTAINS = 1/500 SERVICE SINK = 1
PROPOSED BUILDING: BUILDING 3: 1 STORY @ 33'-4", 21,539 SF	
OCCUPANCY LOADS BUILDING 3: 1253	TOTAL PLUMBING FACILITIES REQUIRED: (OCCUPANCY OF CLASSROOMS AND GYM INCLUDED)
FIRE RESISTANCE (TABLE 601) STRUCTURAL FRAME: 0 HRS BEARING WALLS: EXTERIOR: 0 HRS, INTERIOR: 0 HRS FLOOR CONSTRUCTION: 0 HRS ROOF CONSTRUCTION: 0 HRS SEPARATION WALLS: E FROM E = 2 HRS	WATER CLOSETS = 18 (M+1 F+1) LAVATORIES = 10 DRINKING FOUNTAINS = 5 SERVICE SINK = 1
MAX FLOOR AREA PER OCCUPANT (TABLE 1003.2.2.2) EDUCATION = 20 SF NET ASSEMBLY CHAIRS AND TABLES = 15 NET ASSEMBLY CHAIRS ONLY = 7 NET	TOTAL PLUMBING FACILITIES PROVIDED: (OCCUPANCY OF CLASSROOMS AND GYM INCLUDED)
	WATER CLOSETS = 14 (M+5 F+6 U+B) LAVATORIES = 20 DRINKING FOUNTAINS = 6 SERVICE SINK = 3

SHELTER CALCULATIONS:
EXIT 10 1/2" X 10" REDUCTION = 11005 SF PER OCC. 10 SF FOR
WHEELCHAIR = 10010 = 1020 OCCUPANTS
STORAGE ROOMS: 445F X 30M REDUCTION = 264 SF/5F PER OCC. = 54
OCCUPANTS
RESTROOMS: 565F X 50M REDUCTION = 256 SF/55F PER OCC. = 52
OCCUPANTS
TOTAL = 1926 OCCUPANTS



12 CODE PLAN
NTS

1/8"=1'-0"
1/4"=1'-0"
1/2"=1'-0"
3/4"=1'-0"
1"=1'-0"
1 1/4"=1'-0"
1 1/2"=1'-0"
1 3/4"=1'-0"
2"=1'-0"
2 1/4"=1'-0"
2 1/2"=1'-0"
2 3/4"=1'-0"
3"=1'-0"
3 1/4"=1'-0"
3 1/2"=1'-0"
3 3/4"=1'-0"
4"=1'-0"
4 1/4"=1'-0"
4 1/2"=1'-0"
4 3/4"=1'-0"
5"=1'-0"
5 1/4"=1'-0"
5 1/2"=1'-0"
5 3/4"=1'-0"
6"=1'-0"
6 1/4"=1'-0"
6 1/2"=1'-0"
6 3/4"=1'-0"
7"=1'-0"
7 1/4"=1'-0"
7 1/2"=1'-0"
7 3/4"=1'-0"
8"=1'-0"
8 1/4"=1'-0"
8 1/2"=1'-0"
8 3/4"=1'-0"
9"=1'-0"
9 1/4"=1'-0"
9 1/2"=1'-0"
9 3/4"=1'-0"
10"=1'-0"
10 1/4"=1'-0"
10 1/2"=1'-0"
10 3/4"=1'-0"
11"=1'-0"
11 1/4"=1'-0"
11 1/2"=1'-0"
11 3/4"=1'-0"
12"=1'-0"
12 1/4"=1'-0"
12 1/2"=1'-0"
12 3/4"=1'-0"
13"=1'-0"
13 1/4"=1'-0"
13 1/2"=1'-0"
13 3/4"=1'-0"
14"=1'-0"
14 1/4"=1'-0"
14 1/2"=1'-0"
14 3/4"=1'-0"
15"=1'-0"
15 1/4"=1'-0"
15 1/2"=1'-0"
15 3/4"=1'-0"
16"=1'-0"
16 1/4"=1'-0"
16 1/2"=1'-0"
16 3/4"=1'-0"
17"=1'-0"
17 1/4"=1'-0"
17 1/2"=1'-0"
17 3/4"=1'-0"
18"=1'-0"
18 1/4"=1'-0"
18 1/2"=1'-0"
18 3/4"=1'-0"
19"=1'-0"
19 1/4"=1'-0"
19 1/2"=1'-0"
19 3/4"=1'-0"
20"=1'-0"
20 1/4"=1'-0"
20 1/2"=1'-0"
20 3/4"=1'-0"
21"=1'-0"
21 1/4"=1'-0"
21 1/2"=1'-0"
21 3/4"=1'-0"
22"=1'-0"
22 1/4"=1'-0"
22 1/2"=1'-0"
22 3/4"=1'-0"
23"=1'-0"
23 1/4"=1'-0"
23 1/2"=1'-0"
23 3/4"=1'-0"
24"=1'-0"
24 1/4"=1'-0"
24 1/2"=1'-0"
24 3/4"=1'-0"
25"=1'-0"
25 1/4"=1'-0"
25 1/2"=1'-0"
25 3/4"=1'-0"
26"=1'-0"
26 1/4"=1'-0"
26 1/2"=1'-0"
26 3/4"=1'-0"
27"=1'-0"
27 1/4"=1'-0"
27 1/2"=1'-0"
27 3/4"=1'-0"
28"=1'-0"
28 1/4"=1'-0"
28 1/2"=1'-0"
28 3/4"=1'-0"
29"=1'-0"
29 1/4"=1'-0"
29 1/2"=1'-0"
29 3/4"=1'-0"
30"=1'-0"
30 1/4"=1'-0"
30 1/2"=1'-0"
30 3/4"=1'-0"
31"=1'-0"
31 1/4"=1'-0"
31 1/2"=1'-0"
31 3/4"=1'-0"
32"=1'-0"
32 1/4"=1'-0"
32 1/2"=1'-0"
32 3/4"=1'-0"
33"=1'-0"
33 1/4"=1'-0"
33 1/2"=1'-0"
33 3/4"=1'-0"
34"=1'-0"
34 1/4"=1'-0"
34 1/2"=1'-0"
34 3/4"=1'-0"
35"=1'-0"
35 1/4"=1'-0"
35 1/2"=1'-0"
35 3/4"=1'-0"
36"=1'-0"
36 1/4"=1'-0"
36 1/2"=1'-0"
36 3/4"=1'-0"
37"=1'-0"
37 1/4"=1'-0"
37 1/2"=1'-0"
37 3/4"=1'-0"
38"=1'-0"
38 1/4"=1'-0"
38 1/2"=1'-0"
38 3/4"=1'-0"
39"=1'-0"
39 1/4"=1'-0"
39 1/2"=1'-0"
39 3/4"=1'-0"
40"=1'-0"
40 1/4"=1'-0"
40 1/2"=1'-0"
40 3/4"=1'-0"
41"=1'-0"
41 1/4"=1'-0"
41 1/2"=1'-0"
41 3/4"=1'-0"
42"=1'-0"
42 1/4"=1'-0"
42 1/2"=1'-0"
42 3/4"=1'-0"
43"=1'-0"
43 1/4"=1'-0"
43 1/2"=1'-0"
43 3/4"=1'-0"
44"=1'-0"
44 1/4"=1'-0"
44 1/2"=1'-0"
44 3/4"=1'-0"
45"=1'-0"
45 1/4"=1'-0"
45 1/2"=1'-0"
45 3/4"=1'-0"
46"=1'-0"
46 1/4"=1'-0"
46 1/2"=1'-0"
46 3/4"=1'-0"
47"=1'-0"
47 1/4"=1'-0"
47 1/2"=1'-0"
47 3/4"=1'-0"
48"=1'-0"
48 1/4"=1'-0"
48 1/2"=1'-0"
48 3/4"=1'-0"
49"=1'-0"
49 1/4"=1'-0"
49 1/2"=1'-0"
49 3/4"=1'-0"
50"=1'-0"
50 1/4"=1'-0"
50 1/2"=1'-0"
50 3/4"=1'-0"
51"=1'-0"
51 1/4"=1'-0"
51 1/2"=1'-0"
51 3/4"=1'-0"
52"=1'-0"
52 1/4"=1'-0"
52 1/2"=1'-0"
52 3/4"=1'-0"
53"=1'-0"
53 1/4"=1'-0"
53 1/2"=1'-0"
53 3/4"=1'-0"
54"=1'-0"
54 1/4"=1'-0"
54 1/2"=1'-0"
54 3/4"=1'-0"
55"=1'-0"
55 1/4"=1'-0"
55 1/2"=1'-0"
55 3/4"=1'-0"
56"=1'-0"
56 1/4"=1'-0"
56 1/2"=1'-0"
56 3/4"=1'-0"
57"=1'-0"
57 1/4"=1'-0"
57 1/2"=1'-0"
57 3/4"=1'-0"
58"=1'-0"
58 1/4"=1'-0"
58 1/2"=1'-0"
58 3/4"=1'-0"
59"=1'-0"
59 1/4"=1'-0"
59 1/2"=1'-0"
59 3/4"=1'-0"
60"=1'-0"