

PRYOR PUBLIC SCHOOLS

PRYOR HIGH SCHOOL PHASE 4

CONSTRUCTION DOCUMENTS

MAY 15, 2024
PRYOR, OK

SHEET INDEX:

GENERAL:

G000	COVER SHEET
G001	GENERAL
G100	CODE SHEET
G101	STORM SHEET

CIVIL:

C200	TOPOGRAPHIC SURVEY 1
C201	TOPOGRAPHIC SURVEY 2
C202	TOPOGRAPHIC SURVEY 3
C203	TOPOGRAPHIC SURVEY 4
C300	DEMOLITION PLAN & PHASE 1 EROSION CONTROL PLAN
C301	PHASE 2 EROSION CONTROL PLAN
C302	EROSION CONTROL DETAILS
C400	OVERALL SITE & PAVING PLAN
C400a	ALTERNATE SITE & PAVING PLAN
C500	OVERALL GRADING PLAN
C500a	OVERALL GRADING PLAN - ALTERNATE
C600	OVERALL UTILITY PLAN
C601	FIRE FLOW PLAN
C800	DETAIL SHEET 1
C801	DETAIL SHEET 2

ARCHITECTURAL:

D101	DEMO PLAN
D150	DEMO ROOF PLAN
D151	DEMO ROOF PLAN
A100	OVERALL FLOOR PLAN
A101	FLOOR PLAN AREA 1
A102	FLOOR PLAN AREA 2
A103	FLOOR PLAN AREAS 3 & 4
A150	ROOF PLAN
A151	ALTERNATE ROOF PLAN
A200	ENLARGED PLANS
A201	STAIR DETAILS
A202	STAIR DETAILS
A203	STAIR DETAILS
A301	REFLECTED CEILING PLAN AREA 1
A302	REFLECTED CEILING PLAN AREA 2
A303	REFLECTED CEILING PLAN AREA 3 & 4 ALTERNATE 1
A310	CEILING DETAILS
A400	EXTERIOR ELEVATIONS
A401	EXTERIOR ELEVATIONS
A402	EXTERIOR ELEVATIONS
A500	BUILDING SECTIONS
A501	BUILDING SECTIONS
A510	WALL SECTIONS
A511	WALL SECTIONS
A512	WALL SECTIONS
A513	WALL SECTIONS
A514	WALL SECTIONS
A520	SECTION DETAILS
A521	SECTIONS DETAILS
A600	PLAN DETAILS
A601	PLAN DETAILS
A700	DOOR SCHEDULE
A701	WINDOW DETAILS
A702	DOOR & WINDOW TYPES

INTERIORS:

AI101	FINISH PLAN AREA 1
AI102	FINISH PLAN AREA 2
AI103	FINISH PLAN AREA 3 & 4 ALTERNATE 1
AI111	FLOOR PATTERN PLAN AREA 1
AI112	FLOOR PATTERN PLAN AREA 2
AI113	FLOOR PATTERN PLAN AREA 3 & 4 ALTERNATE 1
AI400	INTERIOR ELEVATIONS
AI401	INTERIOR ELEVATIONS
AI402	INTERIOR ELEVATIONS
AI403	INTERIOR ELEVATIONS
AI404	INTERIOR ELEVATIONS
AI405	INTERIOR ELEVATIONS
AI406	INTERIOR ELEVATIONS
AI407	INTERIOR ELEVATIONS
AI408	INTERIOR ELEVATIONS
AI409	INTERIOR ELEVATIONS ALTERNATE #1
AI500	MILLWORK SECTIONS
AI700	FINISH LEGEND
AI701	SPECIALTIES SCHEDULE
AI702	SIGNAGE SCHEDULE

STRUCTURAL:

S001	GENERAL NOTES
S002	SPECIAL INSPECTIONS
S003	SCHEDULES AND TYPICAL DETAILS
S004	SCHEDULES AND TYPICAL DETAILS
S005	SCHEDULES AND TYPICAL DETAILS
S006	PRECAST SHELTER LOADING
S007	PRECAST PANEL ELEVATIONS
S100	OVERALL FOUNDATION PLAN
S101	FOUNDATION PLAN AREA 1
S102	FOUNDATION PLAN AREA 2
S103	FOUNDATION PLAN AREAS 3 AND 4 (ALT 1)
S120	OVERALL ROOF FRAMING PLAN
S121	ROOF FRAMING PLAN AREA 1
S122	ROOF FRAMING PLAN AREA 2
S123	ROOF FRAMING PLAN AREAS 3 AND 4 (ALT 1)
S124	BURDICK CENTER FRAMING PLAN
S200	FOUNDATION DETAILS
S201	FOUNDATION DETAILS
S202	FOUNDATION DETAILS
S203	FOUNDATION DETAILS
S204	FOUNDATION DETAILS
S220	ROOF FRAMING DETAILS
S221	ROOF FRAMING DETAILS
S222	ROOF FRAMING DETAILS
S223	ROOF FRAMING DETAILS
S224	ROOF FRAMING DETAILS
S225	ROOF FRAMING DETAILS

MECHANICAL:

M000	MECHANICAL LEGEND & ABBREVIATIONS
M001	MECHANICAL OVERALL PLAN
M100	MECHANICAL DEMO PLAN OVERALL
M101	PLUMBING DEMO PLAN AREA 1
M102	PLUMBING DEMO PLAN AREA 2
M103	PLUMBING DEMO PLAN AREA 3
M111	MECHANICAL DEMO PLAN AREA 1
M112	MECHANICAL DEMO PLAN AREA 2
M113	MECHANICAL DEMO PLAN AREA 3
M121	MECHANICAL DEMO PLAN RE-ROOF AREA
M201	UNDERFLOOR PLUMBING PLAN AREA 1
M202	UNDERFLOOR PLUMBING PLAN AREA 2
M203	UNDERFLOOR PLUMBING PLAN AREA 3 & 4
M203A	UNDERFLOOR PLUMBING PLAN AREA 3 & 4 ALT
M211	ABOVEFLOOR PLUMBING PLAN AREA 1
M212	ABOVEFLOOR PLUMBING PLAN AREA 2
M213	ABOVEFLOOR PLUMBING PLAN AREA 3 & 4
M213A	ABOVEFLOOR PLUMBING PLAN AREA 3 & 4 ALT
M300	ENLARGED PLUMBING PLANS AND ISOMETRICS
M301	ENLARGED PLUMBING PLANS AND ISOMETRICS
M302	ENLARGED PLUMBING PLANS AND ISOMETRICS
M401	MECHANICAL FLOOR PLAN AREA 1
M402	MECHANICAL FLOOR PLAN AREA 2
M403	MECHANICAL FLOOR PLAN AREA 3 & 4
M403A	MECHANICAL FLOOR PLAN AREA 3 & 4 ALT
M411	MECHANICAL ROOF PLAN AREA 1
M412	MECHANICAL ROOF PLAN AREA 2
M413	MECHANICAL ROOF PLAN AREA 3 & 4
M413A	MECHANICAL ROOF PLAN AREA 3 & 4 ALT
M414	MECHANICAL ROOF PLAN RE-ROOF AREA
M420	MECHANICAL SECTIONS
M421	MECHANICAL SECTIONS
M430	MECHANICAL ISOMETRICS
M431	MECHANICAL ISOMETRICS
M440	MECHANICAL VRF PIPING SCHEMATICS
M441	MECHANICAL HYDRONIC PIPING DIAGRAMS
M500	MECHANICAL SCHEDULES
M501	MECHANICAL SCHEDULES
M600	MECHANICAL DETAILS
M601	MECHANICAL DETAILS
M602	MECHANICAL DETAILS
M700	FIRE PROTECTION FLOOR PLAN OVERALL
M701	FIRE PROTECTION FLOOR PLAN AREA 1
M702	FIRE PROTECTION FLOOR PLAN AREA 2
M703	FIRE PROTECTION FLOOR PLAN AREA 3 & 4
M703A	FIRE PROTECTION FLOOR PLAN AREA 3 & 4 ALT
M710	FIRE PROTECTION DETAILS
M800	CONTROLS AND SEQUENCES
M801	CONTROLS AND SEQUENCES
M802	CONTROLS AND SEQUENCES

ELECTRICAL:

E000	ELECTRICAL LEGEND
E010	ELECTRICAL DEMOLITION PLAN - AREA 1
E020	ELECTRICAL DEMOLITION PLAN - AREA 2
E100	ELECTRICAL SITE PLAN
E201	ELECTRICAL LIGHTING PLAN - AREA 1
E202	ELECTRICAL LIGHTING PLAN - AREA 2
E203	ELECTRICAL LIGHTING PLAN - AREAS 3 & 4
E204	ELECTRICAL LIGHTING DETAILS
E301	ELECTRICAL POWER PLAN - AREA 1
E302	ELECTRICAL POWER PLAN - AREA 2
E303	ELECTRICAL POWER PLAN - AREAS 3 & 4
E304	ELECTRICAL POWER DETAILS
E305	ELECTRICAL POWER DETAILS
E401	ELECTRICAL SYSTEMS PLAN - AREA 1
E402	ELECTRICAL SYSTEMS PLAN - AREA 2
E403	ELECTRICAL SYSTEMS PLAN - AREAS 3 & 4
E404	ELECTRICAL ROOF PLAN
E405	ELECTRICAL SYSTEMS DETAILS
E406	ELECTRICAL SYSTEMS DETAILS
E407	ELECTRICAL SYSTEMS DETAILS
E501	ELECTRICAL RISER DIAGRAM
E502	ELECTRICAL PANEL SCHEDULES

the.stacy.group
architecture. interiors

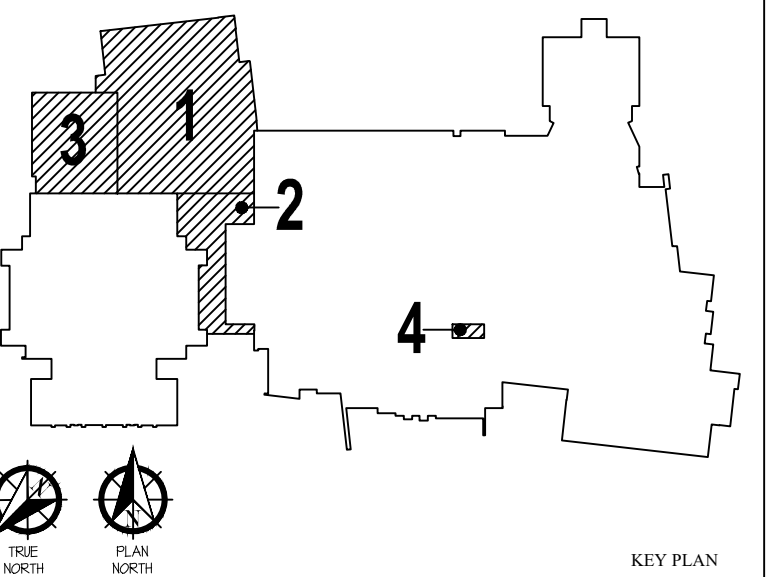
8091 N. Owasso Expressway
Owasso, Oklahoma 74055
phone: 918.472.2622
web: stacy-group.com



Copyright © the.stacy.group

PRYOR HIGH SCHOOL PHASE 4

PRYOR PUBLIC
SCHOOLS
PRYOR, OK
2024



KEY PLAN

REVISIONS

05.15.24

ISSUE DATE

2301 PROJECT NO
LEET DRAWN BY
MDS | CHECK BY

COVER SHEET



wallace
design
collective

wallace design collective, pc
structural/civil/landscape survey
123 north martin luther king jr boulevard
tulsa, oklahoma 74103
918.584.5858 - 918.584.5858



LOWRY CONSTRUCTION SERVICES, INC
1729 South Boston Avenue
Tulsa, OK 74119
P: 918.592.2442



ALLEN
CONSULTING
INCORPORATED

MECHANICAL, ELECTRICAL, PLUMBING AND ENERGY CONSULTING ENGINEERS

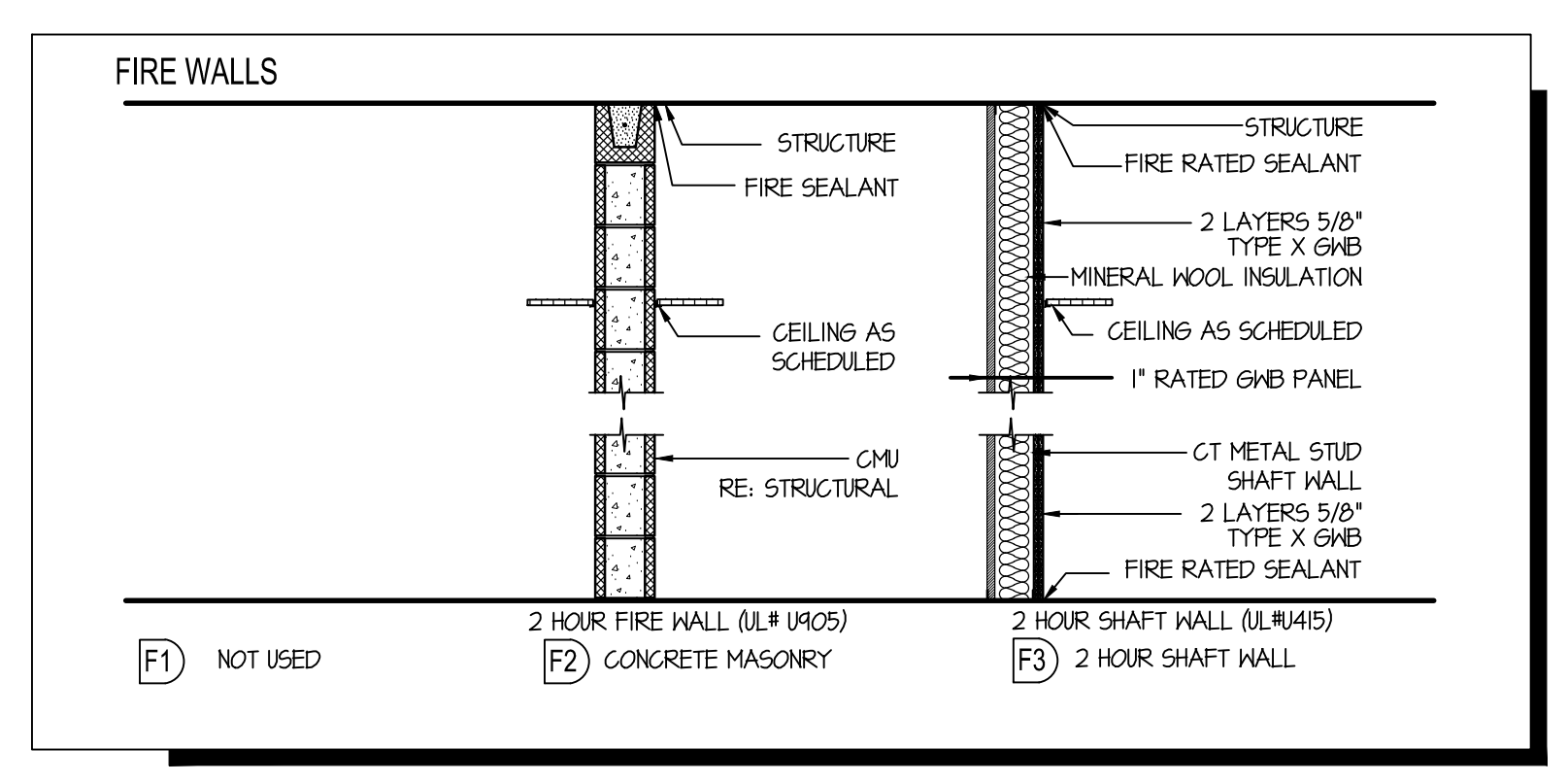
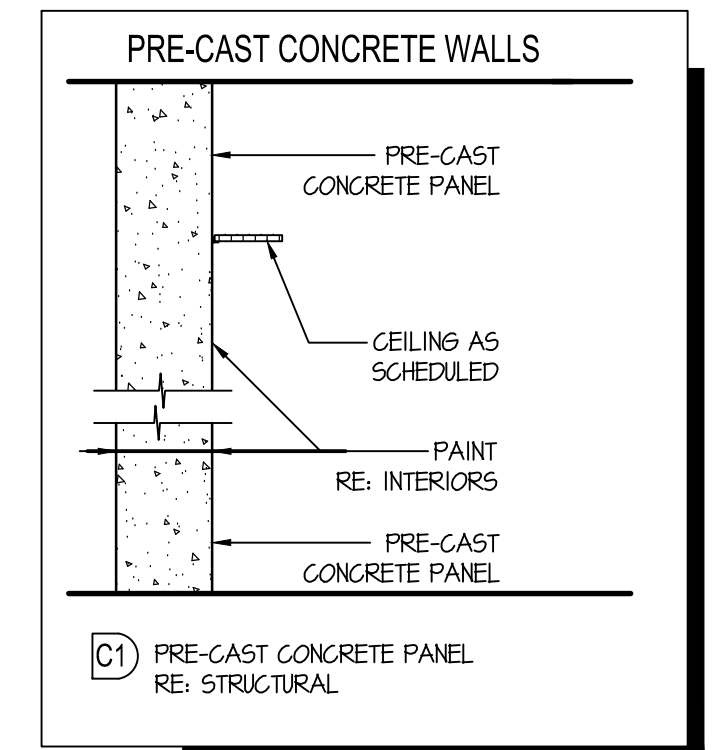
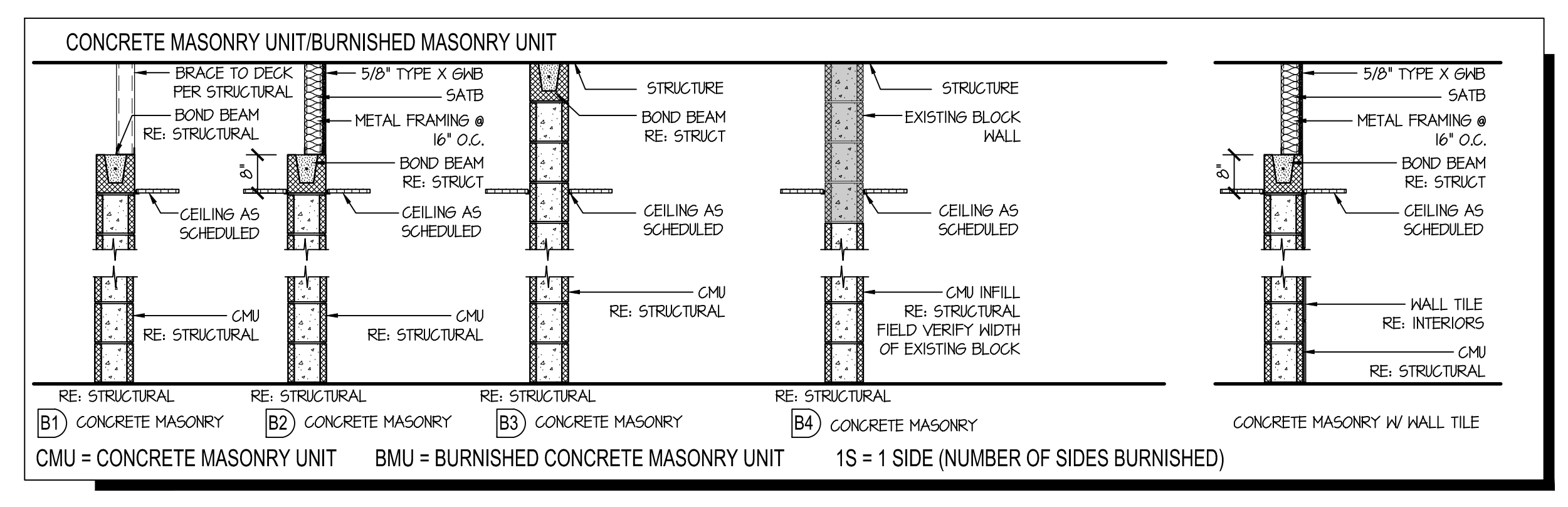
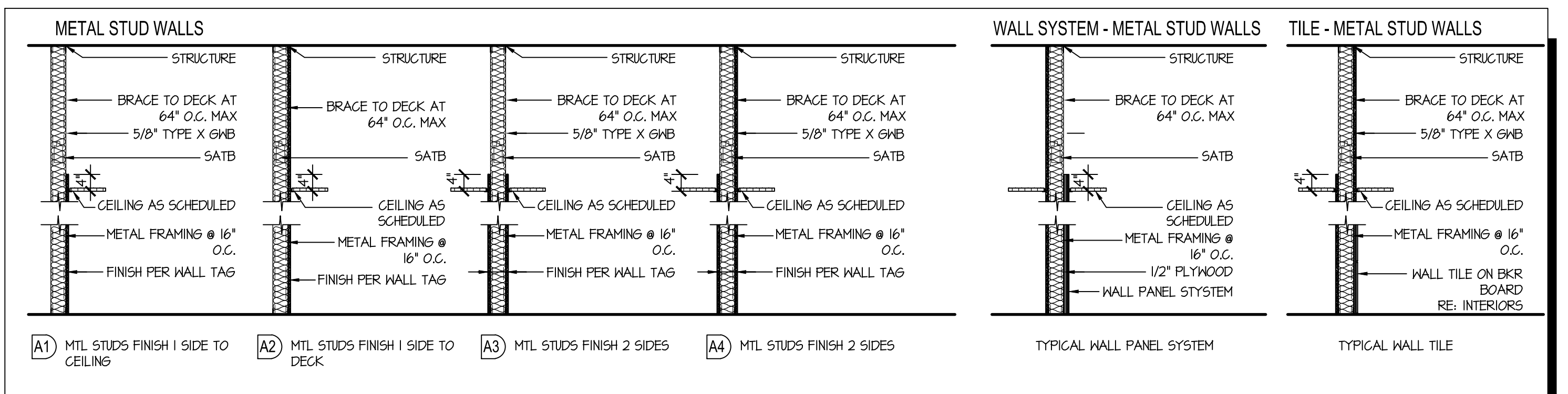
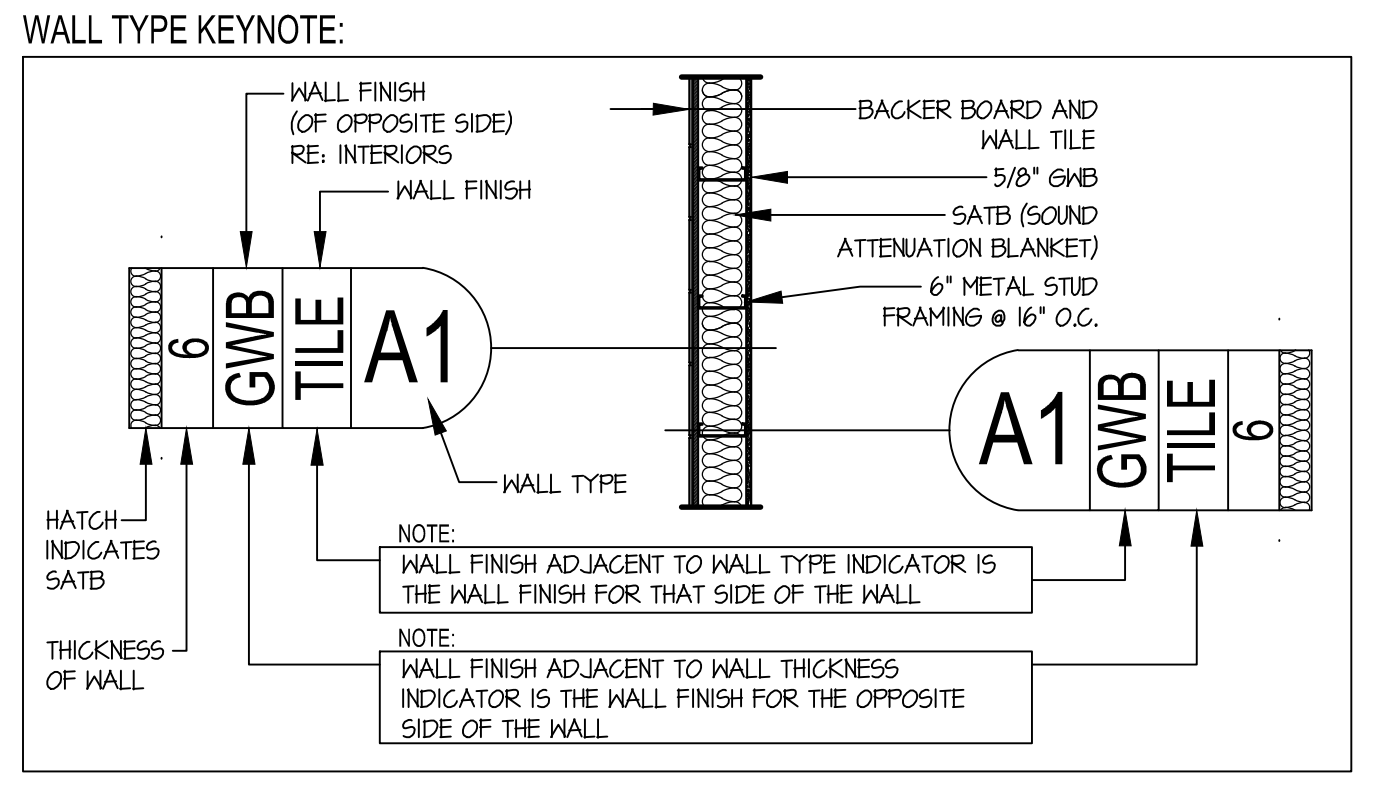
G000

SHEET TITLE

These drawings are subject to copyright protection as an "architectural work" under Section 102 of the Copyright Act, 17 U.S.C., as amended on December 1, 1990. The work includes the overall form as well as the arrangement and composition of spaces and elements in the design. These documents are not to be reproduced without the written consent of the.stacy.group.

1/16"=1'-0"
1/8"=1'-0"
1/4"=1'-0"
3/8"=1'-0"
1/2"=1'-0"
5/8"=1'-0"
3/4"=1'-0"
1"=1'-0"
1 1/4"=1'-0"
1 1/2"=1'-0"
1 3/4"=1'-0"
2"=1'-0"
2 1/2"=1'-0"
3"=1'-0"
3 1/2"=1'-0"
4"=1'-0"
4 1/2"=1'-0"
5"=1'-0"
5 1/2"=1'-0"
6"=1'-0"
6 1/2"=1'-0"
7"=1'-0"
7 1/2"=1'-0"
8"=1'-0"
8 1/2"=1'-0"
9"=1'-0"
9 1/2"=1'-0"
10"=1'-0"
10 1/2"=1'-0"
11"=1'-0"
11 1/2"=1'-0"
12"=1'-0"
12 1/2"=1'-0"
13"=1'-0"
13 1/2"=1'-0"
14"=1'-0"
14 1/2"=1'-0"
15"=1'-0"
15 1/2"=1'-0"
16"=1'-0"
16 1/2"=1'-0"
17"=1'-0"
17 1/2"=1'-0"
18"=1'-0"
18 1/2"=1'-0"
19"=1'-0"
19 1/2"=1'-0"
20"=1'-0"
20 1/2"=1'-0"
21"=1'-0"
21 1/2"=1'-0"
22"=1'-0"
22 1/2"=1'-0"
23"=1'-0"
23 1/2"=1'-0"
24"=1'-0"
24 1/2"=1'-0"
25"=1'-0"
25 1/2"=1'-0"
26"=1'-0"
26 1/2"=1'-0"
27"=1'-0"
27 1/2"=1'-0"
28"=1'-0"
28 1/2"=1'-0"
29"=1'-0"
29 1/2"=1'-0"
30"=1'-0"
30 1/2"=1'-0"
31"=1'-0"
31 1/2"=1'-0"
32"=1'-0"
32 1/2"=1'-0"
33"=1'-0"
33 1/2"=1'-0"
34"=1'-0"
34 1/2"=1'-0"
35"=1'-0"
35 1/2"=1'-0"
36"=1'-0"
36 1/2"=1'-0"
37"=1'-0"
37 1/2"=1'-0"
38"=1'-0"
38 1/2"=1'-0"
39"=1'-0"
39 1/2"=1'-0"
40"=1'-0"
40 1/2"=1'-0"
41"=1'-0"
41 1/2"=1'-0"
42"=1'-0"
42 1/2"=1'-0"
43"=1'-0"
43 1/2"=1'-0"
44"=1'-0"
44 1/2"=1'-0"
45"=1'-0"
45 1/2"=1'-0"
46"=1'-0"
46 1/2"=1'-0"
47"=1'-0"
47 1/2"=1'-0"
48"=1'-0"
48 1/2"=1'-0"
49"=1'-0"
49 1/2"=1'-0"
50"=1'-0"
50 1/2"=1'-0"
51"=1'-0"
51 1/2"=1'-0"
52"=1'-0"
52 1/2"=1'-0"
53"=1'-0"
53 1/2"=1'-0"
54"=1'-0"
54 1/2"=1'-0"
55"=1'-0"
55 1/2"=1'-0"
56"=1'-0"
56 1/2"=1'-0"
57"=1'-0"
57 1/2"=1'-0"
58"=1'-0"
58 1/2"=1'-0"
59"=1'-0"
59 1/2"=1'-0"
60"=1'-0"
60 1/2"=1'-0"
61"=1'-0"
61 1/2"=1'-0"
62"=1'-0"
62 1/2"=1'-0"
63"=1'-0"
63 1/2"=1'-0"
64"=1'-0"
64 1/2"=1'-0"
65"=1'-0"
65 1/2"=1'-0"
66"=1'-0"
66 1/2"=1'-0"
67"=1'-0"
67 1/2"=1'-0"
68"=1'-0"
68 1/2"=1'-0"
69"=1'-0"
69 1/2"=1'-0"
70"=1'-0"
70 1/2"=1'-0"
71"=1'-0"
71 1/2"=1'-0"
72"=1'-0"
72 1/2"=1'-0"
73"=1'-0"
73 1/2"=1'-0"
74"=1'-0"
74 1/2"=1'-0"
75"=1'-0"
75 1/2"=1'-0"
76"=1'-0"
76 1/2"=1'-0"
77"=1'-0"
77 1/2"=1'-0"
78"=1'-0"
78 1/2"=1'-0"
79"=1'-0"
79 1/2"=1'-0"
80"=1'-0"
80 1/2"=1'-0"
81"=1'-0"
81 1/2"=1'-0"
82"=1'-0"
82 1/2"=1'-0"
83"=1'-0"
83 1/2"=1'-0"
84"=1'-0"
84 1/2"=1'-0"
85"=1'-0"
85 1/2"=1'-0"
86"=1'-0"
86 1/2"=1'-0"
87"=1'-0"
87 1/2"=1'-0"
88"=1'-0"
88 1/2"=1'-0"
89"=1'-0"
89 1/2"=1'-0"
90"=1'-0"
90 1/2"=1'-0"
91"=1'-0"
91 1/2"=1'-0"
92"=1'-0"
92 1/2"=1'-0"
93"=1'-0"
93 1/2"=1'-0"
94"=1'-0"
94 1/2"=1'-0"
95"=1'-0"
95 1/2"=1'-0"
96"=1'-0"
96 1/2"=1'-0"
97"=1'-0"
97 1/2"=1'-0"
98"=1'-0"
98 1/2"=1'-0"
99"=1'-0"
99 1/2"=1'-0"
100"=1'-0"

A/C	AIR CONDITIONING	G	GAS	GA	QUALITY ASSURANCE
A/AMP	AMPERES	GA	GAUZE	GC	QUALITY CONTROL
AV	AUTOMATIC AIR VENT	GALV	GALVANIZED	R	RADIUS
AB	ANCHOR BOLT	GB	GRAB BAR	RAP	RESILIENT ATHLETIC FLOORING
AC	ALTERNATING CURRENT	GC	GENERAL CONTRACTOR	RS	RIBBERS BASE
ACC	AIR COOLED CONDENSER	GD	GRADE	RCP	REINFORCED CONCRETE PIPE
ACCU	AIR COOLED CONDENSING UNIT	GEN	GENERAL	RDF	ROOF DRAIN
ADST	ACOUSTIC	GL	GLASS	RE	REFER, REFERENCE
ADN	AREA DRAIN	GRD	GROUND	REINF	REINFORCED REINFORCEMENT
ADON	ADDITION OR ADDITIONAL	GWB	GYPSUM DRYWALL	REFR	REFRIGERATOR
ADJ	ADJUSTABLE	GYP	GYPSUM	REPR	REPRESENTATIVE
ADJT	ADJACENT	H-CONC	HARDENED CONCRETE	REQD	REQUIRED
ADMIN	ADMINISTRATION	HB	HOSE BIBB	REQD	REQUIRED
AF	AIR FILTER	H/C	HANDICAPPED	R	ROOM
AFF	ABOVE FINISH FLOOR	H/L	HOLLOW CORE	RO	ROUGH OPENING
AHJ	AIR HANDLING UNIT	HD	HEAD, HEADED, HEAVY DUTY	RV	ROUGH VENT
ALT	ALTERNATE	H/DG	HOT-DIPPED GALVANIZED		
ALUM	ALUMINUM	HDR	HARDWARE	SATB	SOUND ATTENUATING BATT
ANCH	ANCHOR	HK	HOLLOW HOOK	SB	SPLASH BLOCK
APC	ACOUSTICAL CEILING PANEL	HM	HOLLOW METAL	SC	SOLID CORE
APPROX	APPROXIMATE	HORZ	HORIZONTAL	SD	SCHEDULE
ASPH	ASPHALT	HP	HIGH POINT	SDI	STORM DRAIN
AUTO	AUTOMATIC	HR, HRS	HOUR, HOURS	SEC	SECONDARY
AV	AVERAGE	HT	HEIGHT	SF	SQUARE FEET
AWG	AMERICAN WIRE GAUGE	HTD	HARD WOOD	S/L	SINGLE
		H/SHT	HARD SHEET	S/L	SINGLE
		SH	SHOWER	SL	SHEET
		SHR	SHOWER	SM	SIMILAR
		SI	SIMILAR	SN	SAFETY CONTROL JOINT
		SJ	SEAM	SLD	SEALED
		SK	SANITARY NAPKIN DISPOSAL	SNDI	SANITARY NAPKIN DISPOSAL
		SPA	SPACES	SP	SQUARE
		SQ	SQUARE	SR	SHOWER ROD
		SS	STAINLESS STEEL, SERVICE SINK	STD	STANDARD
		STL	STEEL	STL	STEEL
		STOR	STORAGE	STRUC	STRUCTURE, STRUCTURAL
		STRUC	STRUCTURE, STRUCTURAL	SNP	SHEET WALL PROTECTION
		SNP	SHEET WALL PROTECTION		
		T	TOP		
		TAP	TECTUM ACOUSTICAL PANEL		
		TBM	TACKBOARD WALL		
		TDI	TOILET TISSUE DISPENSER		
		TEL	TELEPHONE		
		TECH	TECHNICAL		
		TEMP	TEMPERATURE		
		TKBD, TB	TACKBOARD		
		TLT	TOILET		
		T/C	TOP OF CURB		
		T/D	TOP OF DRAIN		
		T/M	TOP OF MASONRY		
		T/P	TOP OF PARAPET		
		T/STL	TOP OF STEEL		
		TP	TOILET PARTITION		
		TS	TACK STRIP		
		T/DI	TOILET TISSUE DISPENSER		
		TV	TELEVISION		
		TYP	TYPICAL		
		UN	UNLESS OTHERWISE NOTED		
		UTIL	UTILITY		
		V	VOLTS		
		V, VERT	VERTICAL		
		VCT	VINYL COMPOSITION TILE		
		VEND	VENDING		
		VEST	VESTIBULE		
		VTR	VENT THROUGH ROOF		
		VHC	VINYL WALL COVERING		
		W	WATTS		
		W	WATER CLOSET		
		WC	WATER CLOSET		
		WC	WATER COVERING		
		WD	WATER HEATER		
		WH	WATER HEATER		
		WINDM	WINDM		
		W/O	WITHOUT		
		W/R	WEATHERROOF		
		WR	WASTE RECEPTACLE		
		WT	HEIGHT		
		W/F	WELDED-WIRE FABRIC		



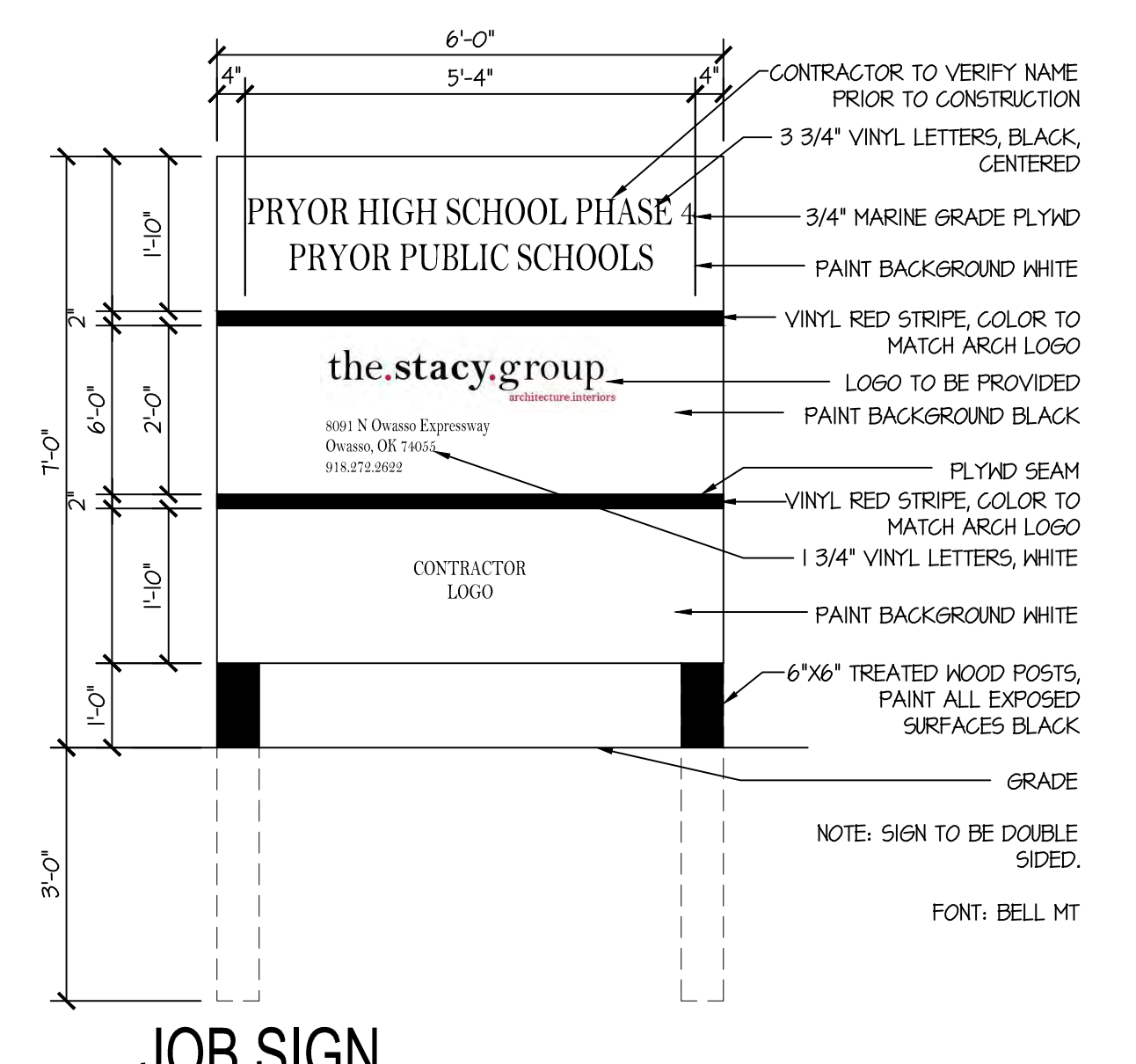
NOTE:

1. RE: INTERIORS ELEVATIONS AND DETAILS FOR EXACT DIMENSIONS FOR WALL TYPES AND TILE PATTERNS
2. RE: ALL 3-5/8" METAL STUD FRAMING EXCEEDING 15'-0" IN HEIGHT SHALL BE BRACED @ 64" O.C. MAX OR 3-5/8" X 1/2" (3RCS) @ 12" O.C. OR 4" X 5/8" (3RCS) @ 16" O.C.
3. EXTEND ALL MASONRY WALLS MIN. 8" ABOVE CEILING LINE. RE: RCP

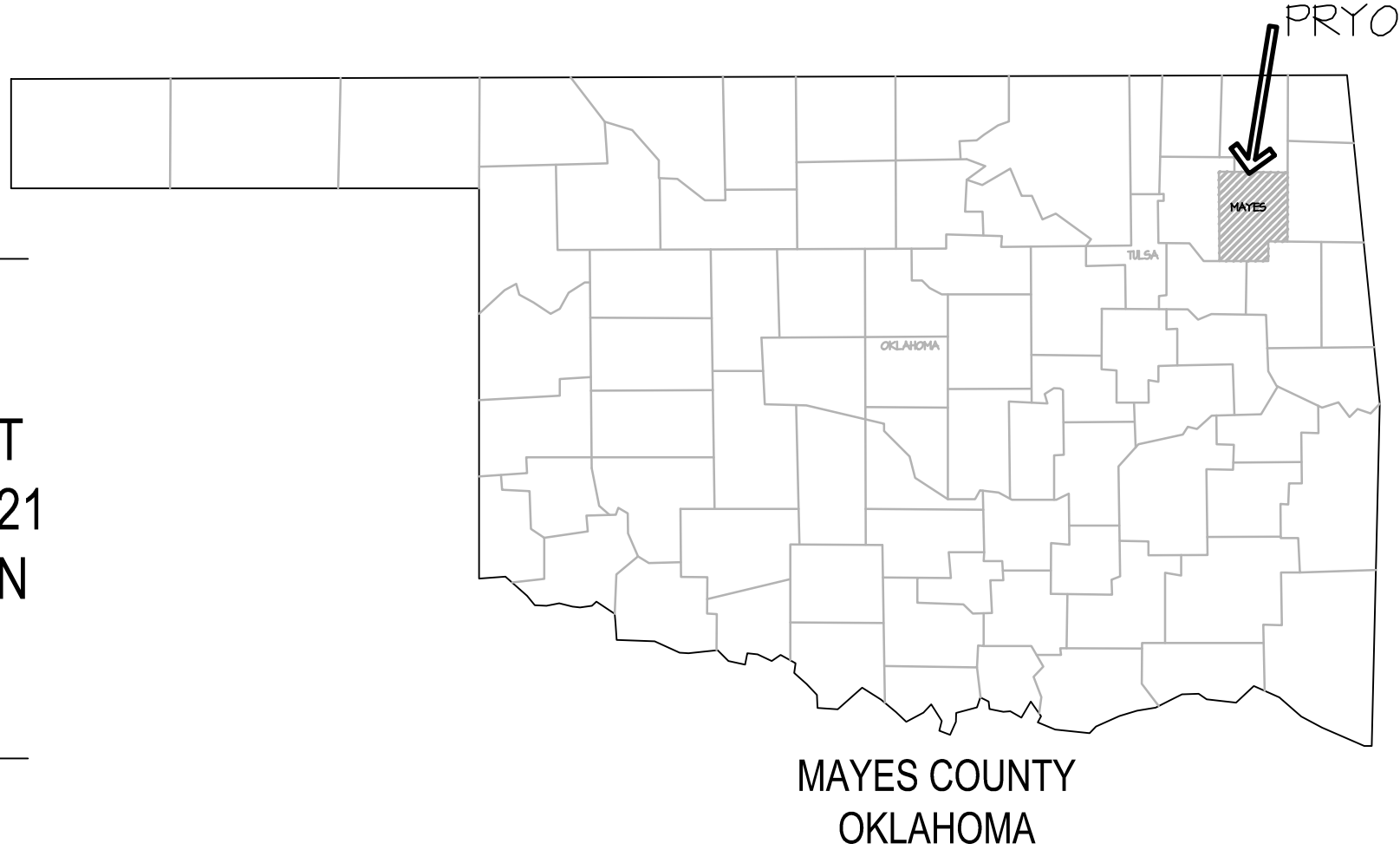
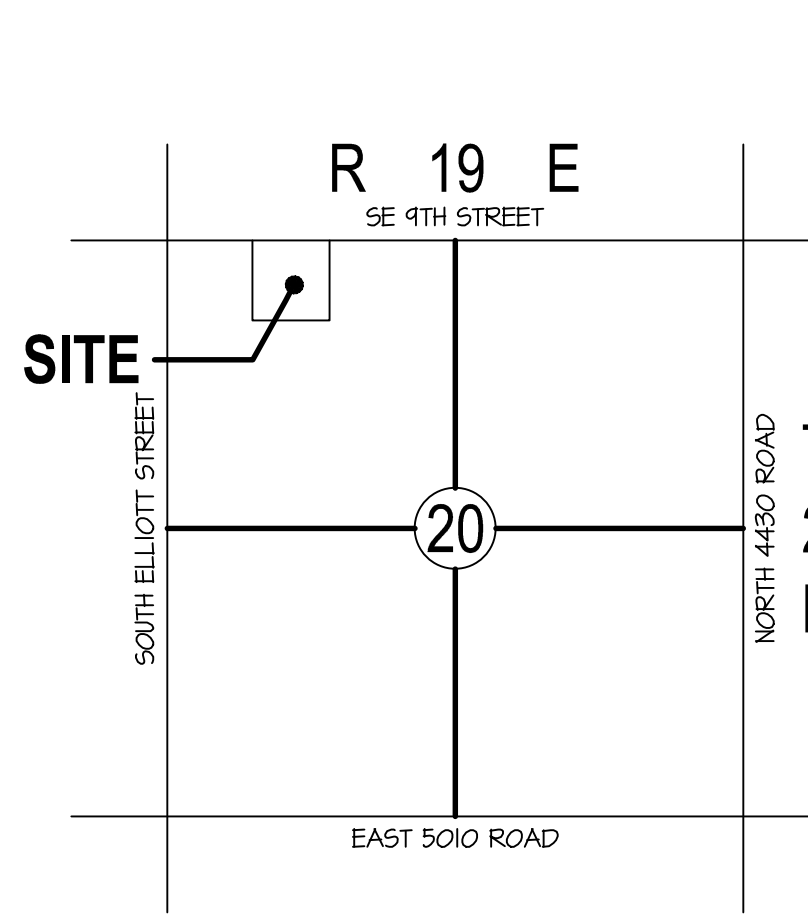
LEGEND:

- FRGB = FIRE RATED GYPSUM WALL BOARD
- GB = GYPSUM WALL BOARD
- SATB = SOUND ATTENUATION BLANKET
- MFRD = MANUFACTURED

11 WALL TYPES
SCALE: 1/2" = 1'-0"



- SYMBOLS**
- XXX ROOM NUMBER
 - XXXXXX ROOM NAME
 - XXX DOOR NUMBER
 - XX INTERIOR AND EXTERIOR ELEVATION REFERENCE
 - XX SECTION REFERENCE
 - XX DETAIL REFERENCE
 - X WALL TYPE
 - X KEYED NOTE
 - X WINDOW TYPE
 - ELEVATION HEIGHT
 - NORTH ARROW
 - REVISION NUMBER



ABBREVIATIONS

JOB SIGN

SYMBOLS

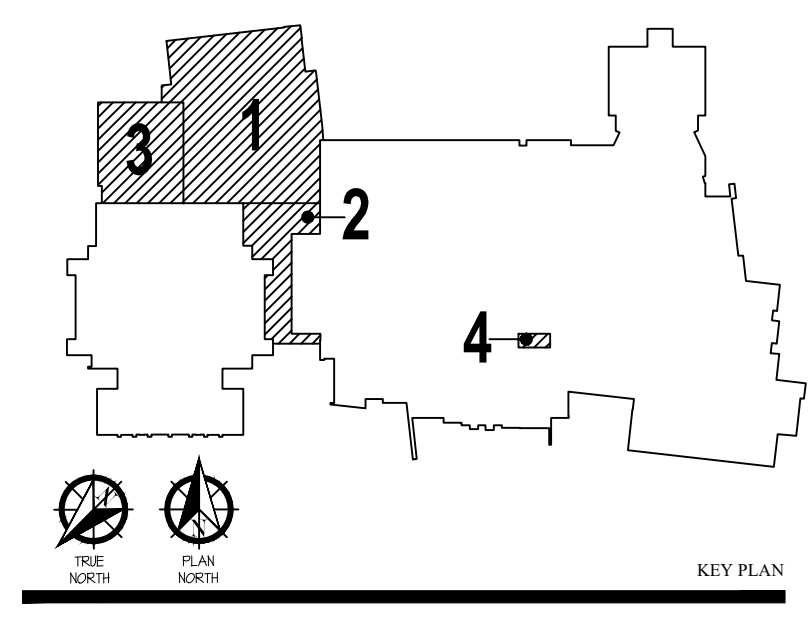
VICINITY MAP
NOT TO SCALE

LOCATION MAP
NOT TO SCALE



PRYOR HIGH SCHOOL PHASE 4

PRYOR PUBLIC SCHOOLS
PRYOR, OK 2024



05.15.24

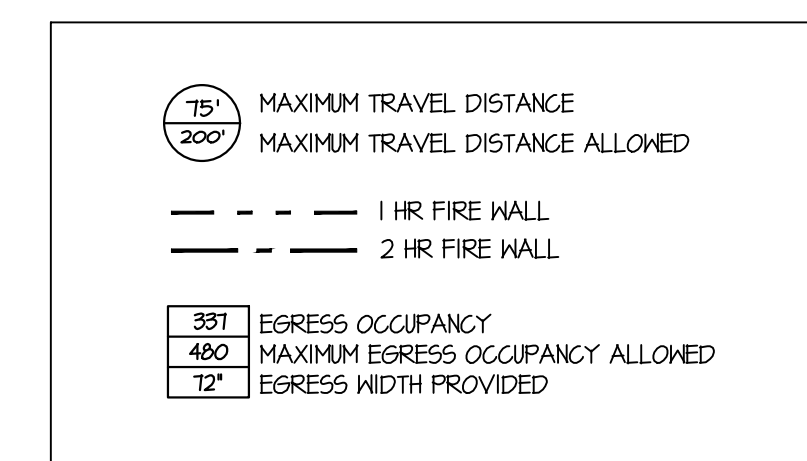
GENERAL

G001

These drawings are subject to copyright protection as an "architectural work" under Section 102 of the Copyright Act, 17 U.S.C., as amended on December 1, 1990. The work includes the overall form as well as the arrangement and composition of spaces and elements in the design. These documents are not to be reproduced without the written consent of the.stacy.group

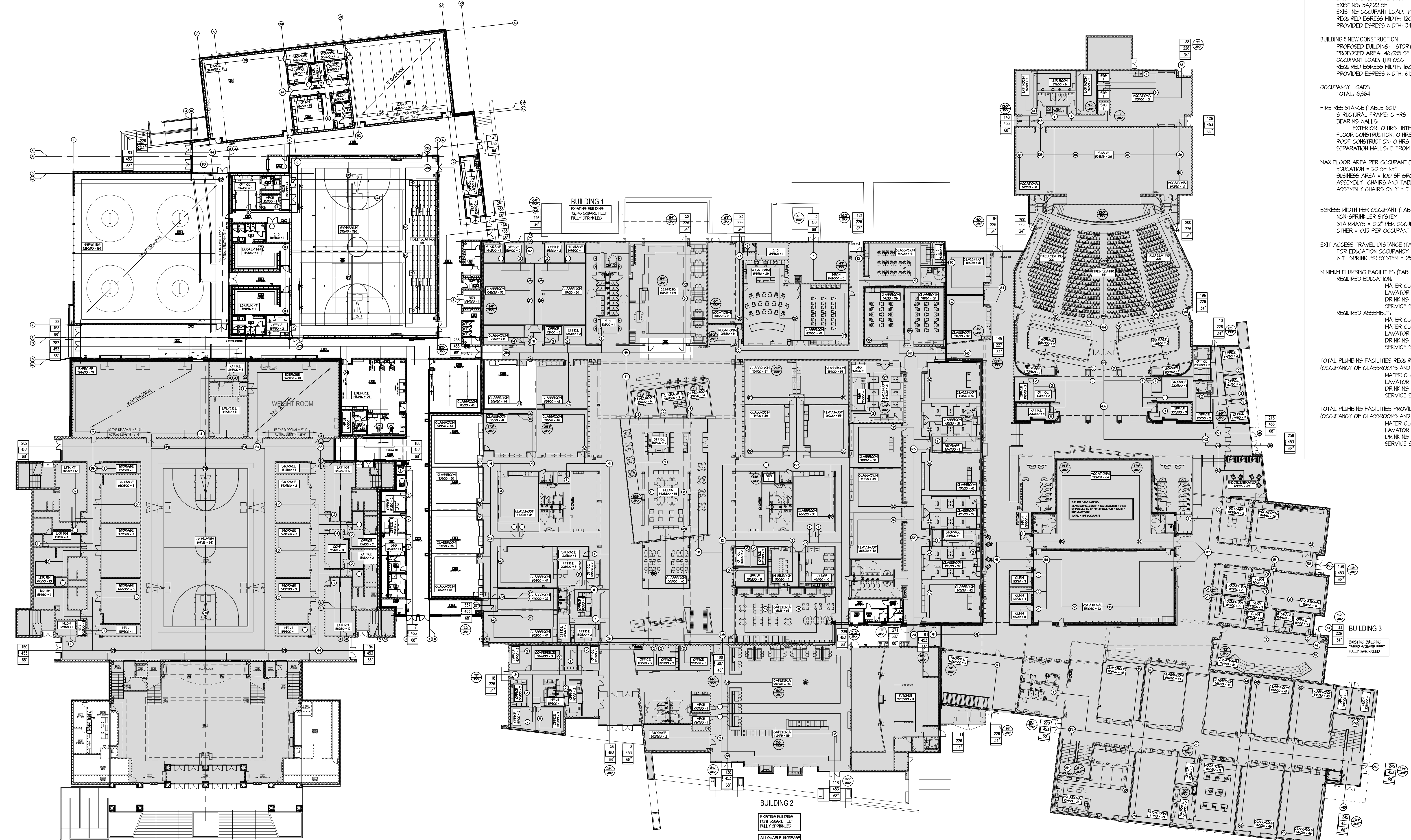
1/8" = 1'-0"
 1/4" = 1'-0"
 1/2" = 1'-0"
 3/4" = 1'-0"
 1" = 1'-0"
 1 1/4" = 1'-0"
 1 1/2" = 1'-0"
 1 3/4" = 1'-0"
 2" = 1'-0"
 2 1/4" = 1'-0"
 2 1/2" = 1'-0"
 2 3/4" = 1'-0"
 3" = 1'-0"
 3 1/4" = 1'-0"
 3 1/2" = 1'-0"
 3 3/4" = 1'-0"
 4" = 1'-0"
 4 1/4" = 1'-0"
 4 1/2" = 1'-0"
 4 3/4" = 1'-0"
 5" = 1'-0"
 5 1/4" = 1'-0"
 5 1/2" = 1'-0"
 5 3/4" = 1'-0"
 6" = 1'-0"
 6 1/4" = 1'-0"
 6 1/2" = 1'-0"
 6 3/4" = 1'-0"
 7" = 1'-0"
 7 1/4" = 1'-0"
 7 1/2" = 1'-0"
 7 3/4" = 1'-0"
 8" = 1'-0"
 8 1/4" = 1'-0"
 8 1/2" = 1'-0"
 8 3/4" = 1'-0"
 9" = 1'-0"
 9 1/4" = 1'-0"
 9 1/2" = 1'-0"
 9 3/4" = 1'-0"
 10" = 1'-0"
 10 1/4" = 1'-0"
 10 1/2" = 1'-0"
 10 3/4" = 1'-0"
 11" = 1'-0"
 11 1/4" = 1'-0"
 11 1/2" = 1'-0"
 11 3/4" = 1'-0"
 12" = 1'-0"
 12 1/4" = 1'-0"
 12 1/2" = 1'-0"
 12 3/4" = 1'-0"
 13" = 1'-0"
 13 1/4" = 1'-0"
 13 1/2" = 1'-0"
 13 3/4" = 1'-0"
 14" = 1'-0"
 14 1/4" = 1'-0"
 14 1/2" = 1'-0"
 14 3/4" = 1'-0"
 15" = 1'-0"
 15 1/4" = 1'-0"
 15 1/2" = 1'-0"
 15 3/4" = 1'-0"
 16" = 1'-0"
 16 1/4" = 1'-0"
 16 1/2" = 1'-0"
 16 3/4" = 1'-0"
 17" = 1'-0"
 17 1/4" = 1'-0"
 17 1/2" = 1'-0"
 17 3/4" = 1'-0"
 18" = 1'-0"
 18 1/4" = 1'-0"
 18 1/2" = 1'-0"
 18 3/4" = 1'-0"
 19" = 1'-0"
 19 1/4" = 1'-0"
 19 1/2" = 1'-0"
 19 3/4" = 1'-0"
 20" = 1'-0"
 20 1/4" = 1'-0"
 20 1/2" = 1'-0"
 20 3/4" = 1'-0"
 21" = 1'-0"
 21 1/4" = 1'-0"
 21 1/2" = 1'-0"
 21 3/4" = 1'-0"
 22" = 1'-0"
 22 1/4" = 1'-0"
 22 1/2" = 1'-0"
 22 3/4" = 1'-0"
 23" = 1'-0"
 23 1/4" = 1'-0"
 23 1/2" = 1'-0"
 23 3/4" = 1'-0"
 24" = 1'-0"
 24 1/4" = 1'-0"
 24 1/2" = 1'-0"
 24 3/4" = 1'-0"
 25" = 1'-0"
 25 1/4" = 1'-0"
 25 1/2" = 1'-0"
 25 3/4" = 1'-0"
 26" = 1'-0"
 26 1/4" = 1'-0"
 26 1/2" = 1'-0"
 26 3/4" = 1'-0"
 27" = 1'-0"
 27 1/4" = 1'-0"
 27 1/2" = 1'-0"
 27 3/4" = 1'-0"
 28" = 1'-0"
 28 1/4" = 1'-0"
 28 1/2" = 1'-0"
 28 3/4" = 1'-0"
 29" = 1'-0"
 29 1/4" = 1'-0"
 29 1/2" = 1'-0"
 29 3/4" = 1'-0"
 30" = 1'-0"
 30 1/4" = 1'-0"
 30 1/2" = 1'-0"
 30 3/4" = 1'-0"
 31" = 1'-0"
 31 1/4" = 1'-0"
 31 1/2" = 1'-0"
 31 3/4" = 1'-0"
 32" = 1'-0"
 32 1/4" = 1'-0"
 32 1/2" = 1'-0"
 32 3/4" = 1'-0"
 33" = 1'-0"
 33 1/4" = 1'-0"
 33 1/2" = 1'-0"
 33 3/4" = 1'-0"
 34" = 1'-0"
 34 1/4" = 1'-0"
 34 1/2" = 1'-0"
 34 3/4" = 1'-0"
 35" = 1'-0"
 35 1/4" = 1'-0"
 35 1/2" = 1'-0"
 35 3/4" = 1'-0"
 36" = 1'-0"
 36 1/4" = 1'-0"
 36 1/2" = 1'-0"
 36 3/4" = 1'-0"
 37" = 1'-0"
 37 1/4" = 1'-0"
 37 1/2" = 1'-0"
 37 3/4" = 1'-0"
 38" = 1'-0"
 38 1/4" = 1'-0"
 38 1/2" = 1'-0"
 38 3/4" = 1'-0"
 39" = 1'-0"
 39 1/4" = 1'-0"
 39 1/2" = 1'-0"
 39 3/4" = 1'-0"
 40" = 1'-0"
 40 1/4" = 1'-0"
 40 1/2" = 1'-0"
 40 3/4" = 1'-0"
 41" = 1'-0"
 41 1/4" = 1'-0"
 41 1/2" = 1'-0"
 41 3/4" = 1'-0"
 42" = 1'-0"
 42 1/4" = 1'-0"
 42 1/2" = 1'-0"
 42 3/4" = 1'-0"
 43" = 1'-0"
 43 1/4" = 1'-0"
 43 1/2" = 1'-0"
 43 3/4" = 1'-0"
 44" = 1'-0"
 44 1/4" = 1'-0"
 44 1/2" = 1'-0"
 44 3/4" = 1'-0"
 45" = 1'-0"
 45 1/4" = 1'-0"
 45 1/2" = 1'-0"
 45 3/4" = 1'-0"
 46" = 1'-0"
 46 1/4" = 1'-0"
 46 1/2" = 1'-0"
 46 3/4" = 1'-0"
 47" = 1'-0"
 47 1/4" = 1'-0"
 47 1/2" = 1'-0"
 47 3/4" = 1'-0"
 48" = 1'-0"
 48 1/4" = 1'-0"
 48 1/2" = 1'-0"
 48 3/4" = 1'-0"
 49" = 1'-0"
 49 1/4" = 1'-0"
 49 1/2" = 1'-0"
 49 3/4" = 1'-0"
 50" = 1'-0"
 50 1/4" = 1'-0"
 50 1/2" = 1'-0"
 50 3/4" = 1'-0"
 51" = 1'-0"
 51 1/4" = 1'-0"
 51 1/2" = 1'-0"
 51 3/4" = 1'-0"
 52" = 1'-0"
 52 1/4" = 1'-0"
 52 1/2" = 1'-0"
 52 3/4" = 1'-0"
 53" = 1'-0"
 53 1/4" = 1'-0"
 53 1/2" = 1'-0"
 53 3/4" = 1'-0"
 54" = 1'-0"
 54 1/4" = 1'-0"
 54 1/2" = 1'-0"
 54 3/4" = 1'-0"
 55" = 1'-0"
 55 1/4" = 1'-0"
 55 1/2" = 1'-0"
 55 3/4" = 1'-0"
 56" = 1'-0"
 56 1/4" = 1'-0"
 56 1/2" = 1'-0"
 56 3/4" = 1'-0"
 57" = 1'-0"
 57 1/4" = 1'-0"
 57 1/2" = 1'-0"
 57 3/4" = 1'-0"
 58" = 1'-0"
 58 1/4" = 1'-0"
 58 1/2" = 1'-0"
 58 3/4" = 1'-0"
 59" = 1'-0"
 59 1/4" = 1'-0"
 59 1/2" = 1'-0"
 59 3/4" = 1'-0"
 60" = 1'-0"
 60 1/4" = 1'-0"
 60 1/2" = 1'-0"
 60 3/4" = 1'-0"
 61" = 1'-0"
 61 1/4" = 1'-0"
 61 1/2" = 1'-0"
 61 3/4" = 1'-0"
 62" = 1'-0"
 62 1/4" = 1'-0"
 62 1/2" = 1'-0"
 62 3/4" = 1'-0"
 63" = 1'-0"
 63 1/4" = 1'-0"
 63 1/2" = 1'-0"
 63 3/4" = 1'-0"
 64" = 1'-0"
 64 1/4" = 1'-0"
 64 1/2" = 1'-0"
 64 3/4" = 1'-0"
 65" = 1'-0"
 65 1/4" = 1'-0"
 65 1/2" = 1'-0"
 65 3/4" = 1'-0"
 66" = 1'-0"
 66 1/4" = 1'-0"
 66 1/2" = 1'-0"
 66 3/4" = 1'-0"
 67" = 1'-0"
 67 1/4" = 1'-0"
 67 1/2" = 1'-0"
 67 3/4" = 1'-0"
 68" = 1'-0"
 68 1/4" = 1'-0"
 68 1/2" = 1'-0"
 68 3/4" = 1'-0"
 69" = 1'-0"
 69 1/4" = 1'-0"
 69 1/2" = 1'-0"
 69 3/4" = 1'-0"
 70" = 1'-0"
 70 1/4" = 1'-0"
 70 1/2" = 1'-0"
 70 3/4" = 1'-0"
 71" = 1'-0"
 71 1/4" = 1'-0"
 71 1/2" = 1'-0"
 71 3/4" = 1'-0"
 72" = 1'-0"
 72 1/4" = 1'-0"
 72 1/2" = 1'-0"
 72 3/4" = 1'-0"
 73" = 1'-0"
 73 1/4" = 1'-0"
 73 1/2" = 1'-0"
 73 3/4" = 1'-0"
 74" = 1'-0"
 74 1/4" = 1'-0"
 74 1/2" = 1'-0"
 74 3/4" = 1'-0"
 75" = 1'-0"
 75 1/4" = 1'-0"
 75 1/2" = 1'-0"
 75 3/4" = 1'-0"
 76" = 1'-0"
 76 1/4" = 1'-0"
 76 1/2" = 1'-0"
 76 3/4" = 1'-0"
 77" = 1'-0"
 77 1/4" = 1'-0"
 77 1/2" = 1'-0"
 77 3/4" = 1'-0"
 78" = 1'-0"
 78 1/4" = 1'-0"
 78 1/2" = 1'-0"
 78 3/4" = 1'-0"
 79" = 1'-0"
 79 1/4" = 1'-0"
 79 1/2" = 1'-0"
 79 3/4" = 1'-0"
 80" = 1'-0"
 80 1/4" = 1'-0"
 80 1/2" = 1'-0"
 80 3/4" = 1'-0"
 81" = 1'-0"
 81 1/4" = 1'-0"
 81 1/2" = 1'-0"
 81 3/4" = 1'-0"
 82" = 1'-0"
 82 1/4" = 1'-0"
 82 1/2" = 1'-0"
 82 3/4" = 1'-0"
 83" = 1'-0"
 83 1/4" = 1'-0"
 83 1/2" = 1'-0"
 83 3/4" = 1'-0"
 84" = 1'-0"
 84 1/4" = 1'-0"
 84 1/2" = 1'-0"
 84 3/4" = 1'-0"
 85" = 1'-0"
 85 1/4" = 1'-0"
 85 1/2" = 1'-0"
 85 3/4" = 1'-0"
 86" = 1'-0"
 86 1/4" = 1'-0"
 86 1/2" = 1'-0"
 86 3/4" = 1'-0"
 87" = 1'-0"
 87 1/4" = 1'-0"
 87 1/2" = 1'-0"
 87 3/4" = 1'-0"
 88" = 1'-0"
 88 1/4" = 1'-0"
 88 1/2" = 1'-0"
 88 3/4" = 1'-0"
 89" = 1'-0"
 89 1/4" = 1'-0"
 89 1/2" = 1'-0"
 89 3/4" = 1'-0"
 90" = 1'-0"
 90 1/4" = 1'-0"
 90 1/2" = 1'-0"
 90 3/4" = 1'-0"
 91" = 1'-0"
 91 1/4" = 1'-0"
 91 1/2" = 1'-0"
 91 3/4" = 1'-0"
 92" = 1'-0"
 92 1/4" = 1'-0"
 92 1/2" = 1'-0"
 92 3/4" = 1'-0"
 93" = 1'-0"
 93 1/4" = 1'-0"
 93 1/2" = 1'-0"
 93 3/4" = 1'-0"
 94" = 1'-0"
 94 1/4" = 1'-0"
 94 1/2" = 1'-0"
 94 3/4" = 1'-0"
 95" = 1'-0"
 95 1/4" = 1'-0"
 95 1/2" = 1'-0"
 95 3/4" = 1'-0"
 96" = 1'-0"
 96 1/4" = 1'-0"
 96 1/2" = 1'-0"
 96 3/4" = 1'-0"
 97" = 1'-0"
 97 1/4" = 1'-0"
 97 1/2" = 1'-0"
 97 3/4" = 1'-0"
 98" = 1'-0"
 98 1/4" = 1'-0"
 98 1/2" = 1'-0"
 98 3/4" = 1'-0"
 99" = 1'-0"
 99 1/4" = 1'-0"
 99 1/2" = 1'-0"
 99 3/4" = 1'-0"
 100" = 1'-0"

CODE STUDY LEGEND:



CODE STUDY:

APPLICABLE CODES:
 INTERNATIONAL EXISTING BUILDING CODE 2018
 INTERNATIONAL BUILDING CODE 2018
 LIFE SAFETY CODE 2018
 INTERNATIONAL PLUMBING CODE 2018
 INTERNATIONAL MECHANICAL CODE 2018
 ADMINISTRATIVE PROVISIONS OF ELECTRIC CODE 2020
 NATIONAL ELECTRIC CODE 2020
 OCCUPANCY TYPE: E - EDUCATION
 CONSTRUCTION TYPE: IIB
 ALLOWABLE HEIGHT AND AREA (TABLE 503)
 E-EDUCATION - 2 STORIES AND 55'-0"; 58,000 SF
 BUILDING 1 EXISTING
 EXISTING BUILDING: 1 STORY @ 19'-6"
 EXISTING: 12,145 SF
 EXISTING OCCUPANT LOAD: 1672 OCC
 REQUIRED EGRESS WIDTH: 251"
 PROVIDED EGRESS WIDTH: 548"
 BUILDING 2 EXISTING
 EXISTING BUILDING: 1 STORY @ 28'-0"
 EXISTING: 17,711 SF
 EXISTING OCCUPANT LOAD: 285 OCC
 REQUIRED EGRESS WIDTH: 48"
 PROVIDED EGRESS WIDTH: 522"
 BUILDING 3 EXISTING
 EXISTING BUILDING: 2 STORY @ 54'-0"
 EXISTING: 13,613 SF
 EXISTING OCCUPANT LOAD: 2,494 OCC
 REQUIRED EGRESS WIDTH: 375"
 PROVIDED EGRESS WIDTH: 418"
 BUILDING 4 EXISTING
 EXISTING BUILDING: 2 STORY @ 48'-0"
 EXISTING: 34,422 SF
 EXISTING OCCUPANT LOAD: 794 OCC
 REQUIRED EGRESS WIDTH: 120"
 PROVIDED EGRESS WIDTH: 340"
 BUILDING 5 NEW CONSTRUCTION
 PROPOSED BUILDING: 1 STORY @ 32'-0"
 PROPOSED AREA: 46,035 SF
 OCCUPANT LOAD: 1181 OCC
 REQUIRED EGRESS WIDTH: 168"
 PROVIDED EGRESS WIDTH: 612"
 OCCUPANCY LOADS
 TOTAL: 6,364
 FIRE RESISTANCE (TABLE 601)
 STRUCTURAL FRAME: 0 HRS
 BEARING WALLS:
 EXTERIOR: 0 HRS INTERIOR: 0 HRS
 FLOOR CONSTRUCTION: 0 HRS
 ROOF CONSTRUCTION: 0 HRS
 SEPARATION WALLS: E FROM E = 2 HRS
 MAX FLOOR AREA PER OCCUPANT (TABLE 1003 2.2.2)
 EDUCATION = 20 SF NET
 BUSINESS AREA = 100 SF GROSS
 ASSEMBLY CHAIRS AND TABLES = 15 NET
 ASSEMBLY CHAIRS ONLY = 1 NET
 EGRESS WIDTH PER OCCUPANT (TABLE 1005.1)
 NON-SPRINKLER SYSTEM
 STAIRWAYS = 0.21 PER OCCUPANT (NOT APPLICABLE)
 OTHER = 0.15 PER OCCUPANT
 EXIT ACCESS TRAVEL DISTANCE (TABLE 1004 2.4)
 FOR EDUCATION OCCUPANCY
 WITH SPRINKLER SYSTEM = 250 FT
 MINIMUM PLUMBING FACILITIES (TABLE 2402.1)
 REQUIRED EDUCATION:
 WATER CLOSETS = 150 MF
 LAVATORIES = 150 MF
 DRINKING FOUNTAINS = 1/00
 SERVICE SINK = 1
 REQUIRED ASSEMBLY:
 WATER CLOSETS = 1/25 M
 WATER CLOSETS = 1/65 F
 LAVATORIES = 1/200 MF
 DRINKING FOUNTAINS = 1/500
 SERVICE SINK = 1
 TOTAL PLUMBING FACILITIES REQUIRED:
 (OCCUPANCY OF CLASSROOMS AND GYM INCLUDED)
 WATER CLOSETS = 128 (M=64 F=64)
 LAVATORIES = 128
 DRINKING FOUNTAINS = 64
 SERVICE SINK = 1
 TOTAL PLUMBING FACILITIES PROVIDED:
 (OCCUPANCY OF CLASSROOMS AND GYM INCLUDED)
 WATER CLOSETS = 152 (M=65 F=87)
 LAVATORIES = 118
 DRINKING FOUNTAINS = 52
 SERVICE SINK = 10

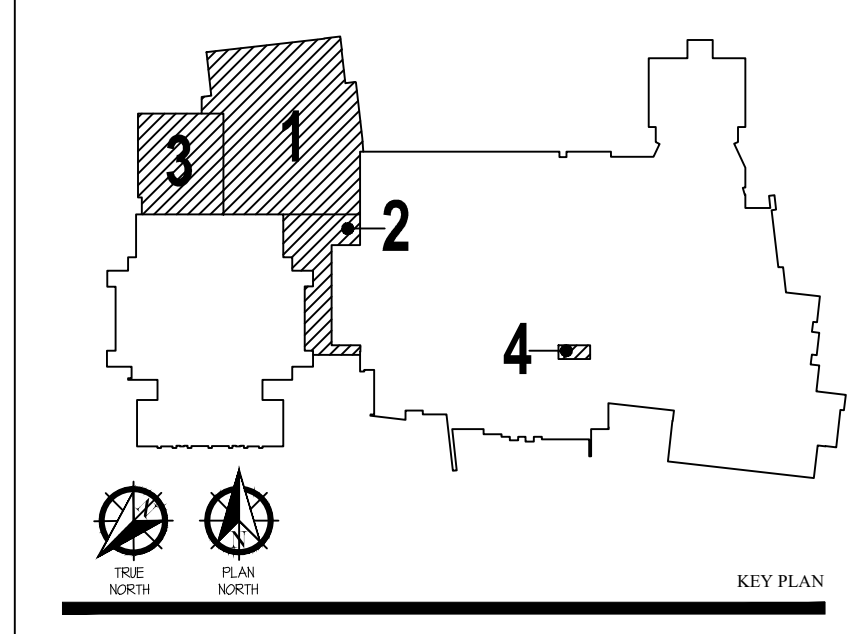


the.stacy.group
 architecture. interiors
 8091 N. Owasso Expressway
 Owasso, Oklahoma 74055
 phone: 918.472.2622
 web: stacy-group.com



**PRYOR
 HIGH SCHOOL
 PHASE 4**

PRYOR PUBLIC
 SCHOOLS
 PRYOR, OK
 2024

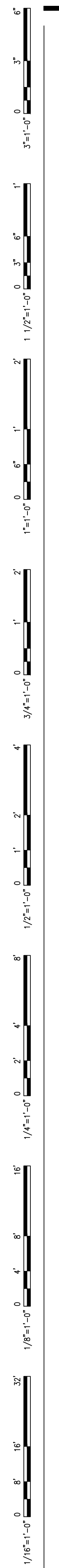


REVISIONS
 05.15.24

CODE SHEET

G100
 SHEET TITLE

These drawings are subject to copyright protection as an "architectural work" under Section 102 of the Copyright Act, 17 U.S.C., as amended on December 1, 1990. The work includes the overall form as well as the arrangement and composition of spaces and elements in the design. These documents are not to be reproduced without the written consent of the.stacy.group.



SHELTER CALCULATIONS:

PROPOSED SHELTER:
 CONCENTRATED FURNISHINGS: 432
 OPEN PLAN FURNISHINGS: 1230
 UNFURNISHED: 8,038

SHELTER OCCUPANT LOADS:
 CONCENTRATED: 42
 OPEN PLAN: 180
 UNFURNISHED: 1,601
 FIXED SEATING: 351
 TOTAL: 2,444

GROSS OCCUPANCY: 2,160
 ACCESSIBLE SPACES: 11
 TOTAL: 2,171

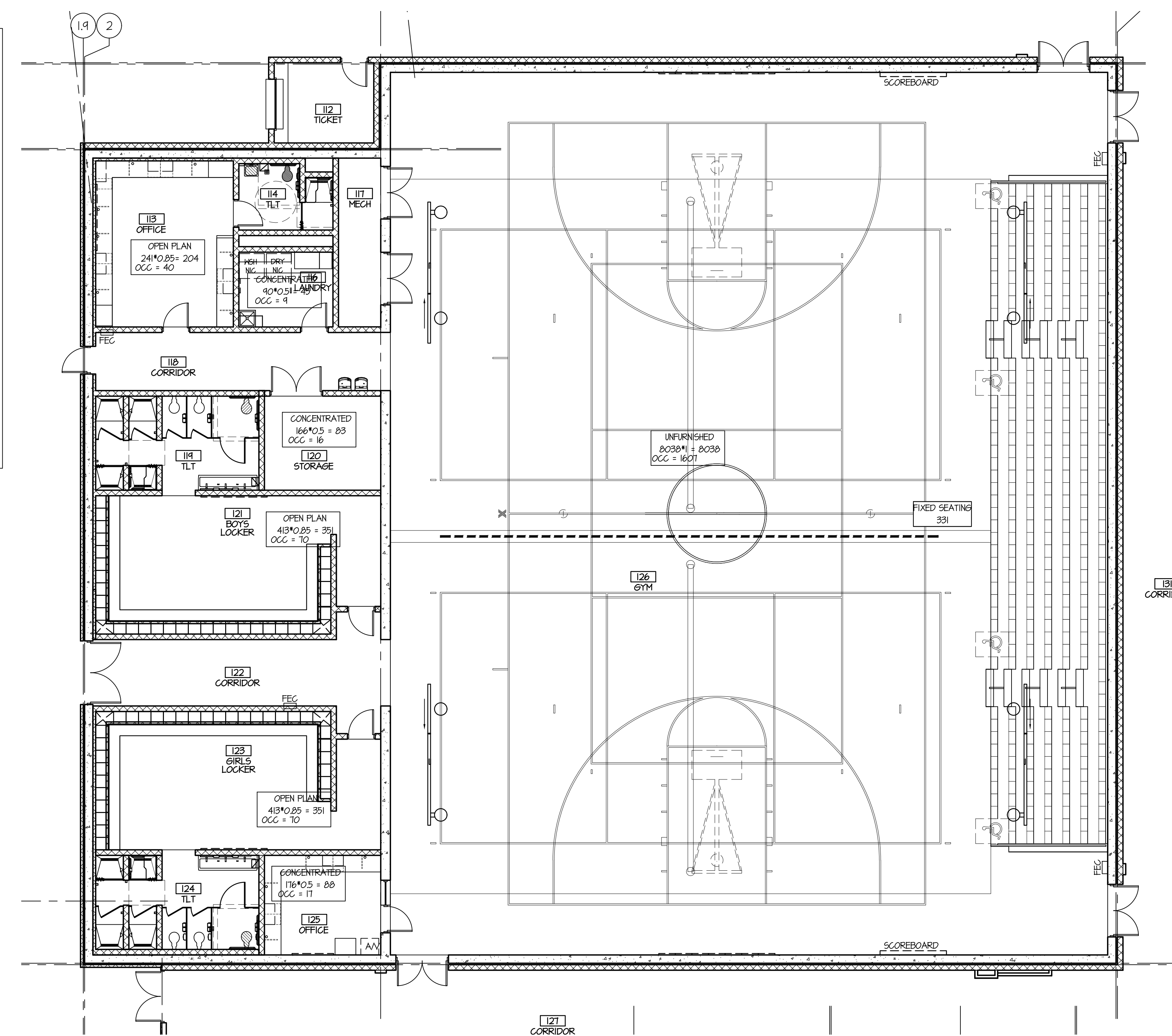
EGRESS WIDTH PER OCCUPANT
 WITH SPRINKLER SYSTEM & VOICE EVAC
 STAIRWAYS = 0.2' PER OCCUPANT
 OTHER = 0.15' PER OCCUPANT

EXIT WIDTH DIRECTLY TO EXTERIOR: 0'

MINIMUM PLUMBING FACILITIES
 REQUIRED SHELTER:
 WATER CLOSETS = 1/250 (FIRST 500 OCC)
 WATER CLOSETS = 1/500 ADDITIONAL
 LAVATORIES = 1/1000

TOTAL PLUMBING FACILITIES REQUIRED:
 WATER CLOSETS: 6
 LAVATORIES: 3

TOTAL PLUMBING FACILITIES PROVIDED:
 WATER CLOSETS = 7
 LAVATORIES = 1



11 CODE PLAN
 SCALE: NTS

the.stacy.group
 architecture. interiors

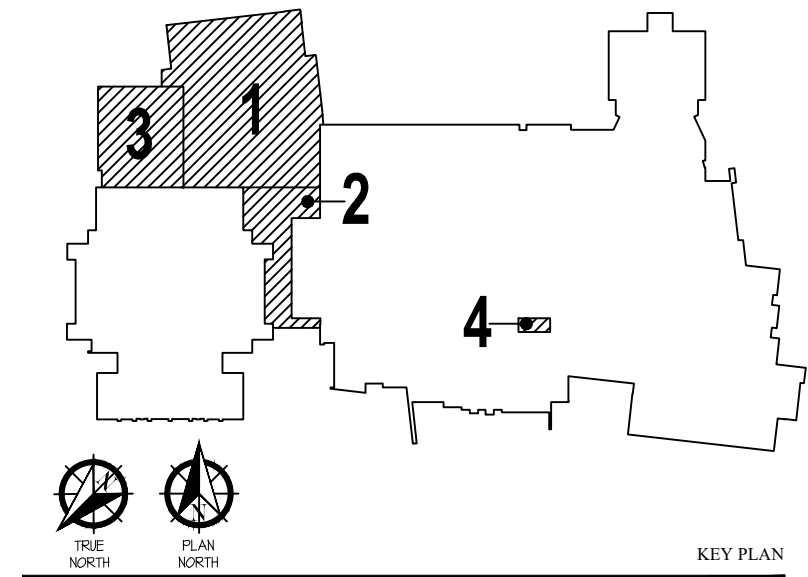
8091 N. Owasso Expressway
 Owasso, Oklahoma 74055
 phone: 918.472.2622
 web: stacy-group.com



Copyright © the.stacy.group

**PRYOR
 HIGH SCHOOL
 PHASE 4**

PRYOR PUBLIC
 SCHOOLS
 PRYOR, OK
 2024



KEY PLAN

05.15.24

STORM SHEET

NO.	PROJECT NO.	DATE
2301	2301	05.15.24
MDS	LETT	DRW
		CHKD BY

G101

SHEET TITLE

These drawings are subject to copyright protection as an "architectural work" under Section 102 of the Copyright Act, 17 U.S.C., as amended on December 1, 1990. The work includes the overall form as well as the arrangement and composition of spaces and elements in the design. These documents are not to be reproduced without the written consent of the.stacy.group.