

**PRYOR PUBLIC SCHOOLS
PRYOR JR HIGH SHELTER
ADDITION**

Owner:
Independent School District No. 1
Mayes County
Pryor, Oklahoma

Architect: The Stacy Group
Project Number: 1803

10.22.2019



a
d
d
e
n
d
u
m

n
o
.
f
o
u
r

addendum number: **FOUR (4)**

date: 10.22.2019

project: PRYOR PUBLIC SCHOOLS
Junior High Shelter Addition
PRYOR, OK

project number: 1803

architect: The Stacy Group
8091 N. Owasso Expressway
Owasso, OK 74055
(918) 272-2622
f (918) 272-2633

To: Prospective Bidders

This Addendum forms a part of the Contract Documents and modifies the original Bidding Documents dated **September 17, 2019**, as noted below. Acknowledge receipt of this Addendum in the space provided on the Bid Form. Failure to do so may subject Bidder to disqualification.

Clarifications:

- A4-1 All temporary utilities will be provided by owner.
- A4- 2 Civil Sheet C300: Clarification for Note 15. "Owner shall provide temporary utility service if required."
- A4- 3 Electrical: All security cameras will now be owner provided; contractor installed.

Pre-Qualifications: None

Specifications: None

Drawings:

General: None

Civil: None

Architectural: None

Interiors:

- A4-4 **Sheet AI101 Finish Plan Area 1 & 2:** Add Wall Pattern (WP4) to walls outside of concession. Refer to attached sheet AI101.
- A4-5 **Sheet AI101 Finish Plan Area 1 & 2:** Add Wall finish tag (P4:G) EPOXY behind drinking fountains outside of girls 131 & boys 134. Refer to attached sheet AI101.
- A4-6 **Sheet AI101 Finish Plan Area 1 & 2:** Add Finish Remark #10 to Room Finish tag Remarks in Area 2, RM 135, 136, 138, 139, 140. Refer to attached sheet AI101.
- A4-7 **Sheet AI400 Interior Elevations:** Revise millwork number for teachers wardrobe #5252 Locked, to #25617 Locked for detail 52 & 53/AI400. Refer to attached sheet AI400.
- A4-8 **Sheet AI401 Interior Elevations:** Revise millwork number for teachers wardrobe #5252 Locked, to #25617 Locked for detail 11 & 12/AI401. Refer to attached sheet AI401.

- A4-9 **Sheet AI700 Finish Legend & Specialties Schedule:** Revise Specialties schedule, LKR1 – MVP Athletic Locker, flat top of locker, 1 upper open storage area with 1 lockable compartment – lock to be provided by owner. Provide Foot Locker option – locker provided by owner. Size: 24”w x 18”d x 72” overall, color: True Navy 85. Refer to attached sheet AI700.
- A4-10 **Sheet AI700 Finish Legend & Specialties Schedule:** Revise Specialties schedule, LKR2 – Heavy Duty Ventilated Locker, with slope top, recessed handle with plastic lifting trigger – lock to be provided by owner, double tiered size: 18”w x 18”d x36”h with 72” overall, color: True Navy 85. Refer to attached sheet AI700.
- A4-11 **Sheet AI700 Finish Legend & Specialties Schedule:** Add Wall Pattern (WP4) to Finish schedule. WP4: Consist of wall tile (WT1) as field, w/ accent of (WT2), (WT3) and (WT4). Grout Color to be determined. Refer to 11/AI400 & 21/AI400 for details. Refer to attached sheet AI700.
- A4-12 **Sheet AI700 Finish Legend & Specialties Schedule:** Add Finish Remarks “R” #10. Finish Remark 10 to read: Existing hollow metal door frames to be painted black (P7) on both sides of door. Refer to attached sheet AI700.

Structural: None

Mechanical: None

Plumbing: None

Electrical: None

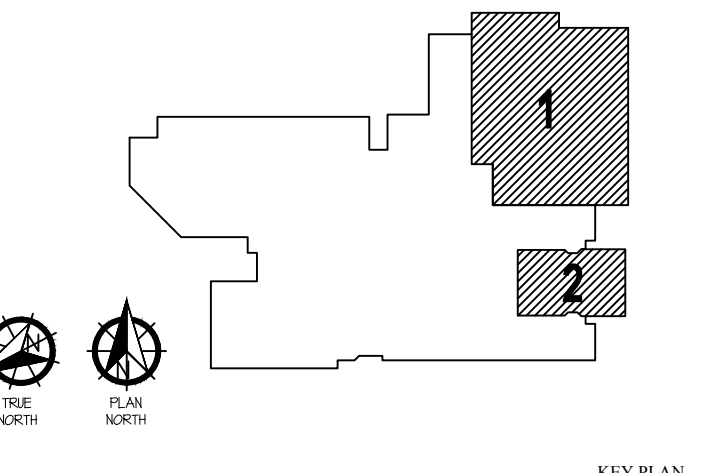
END OF ADDENDUM



Copyright © the stacy group

JUNIOR HIGH SHELTER ADDITION

PRYOR PUBLIC
SCHOOLS
PRYOR, OK
2019



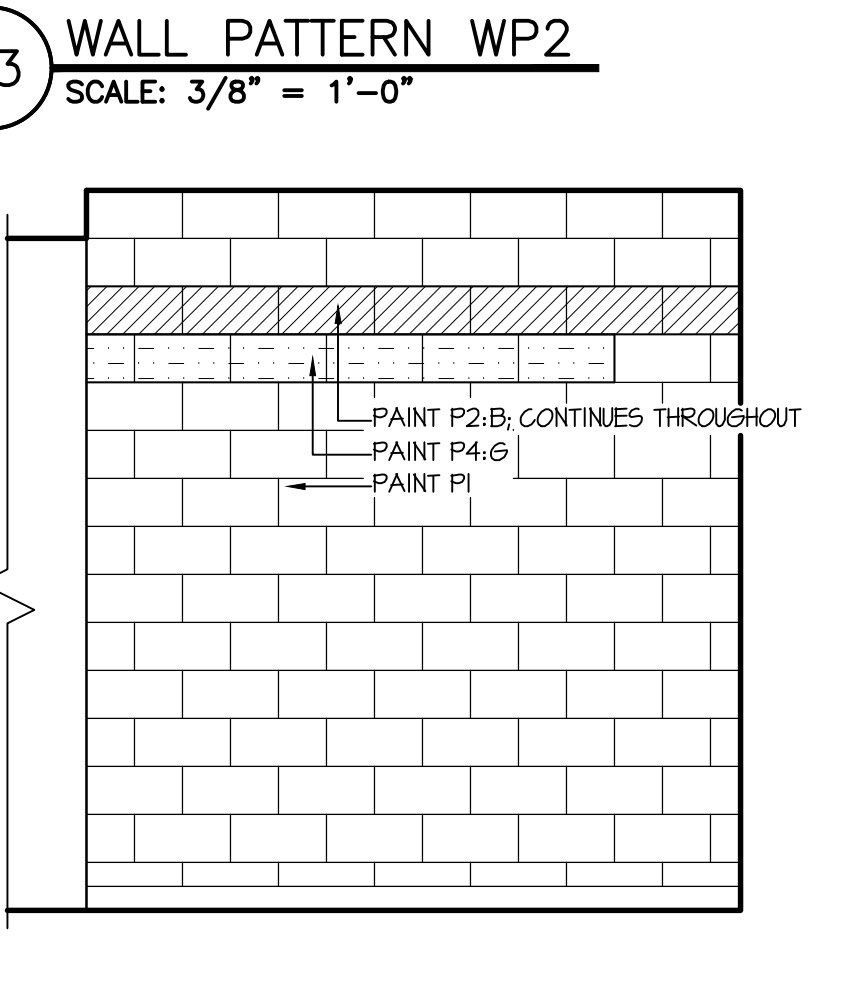
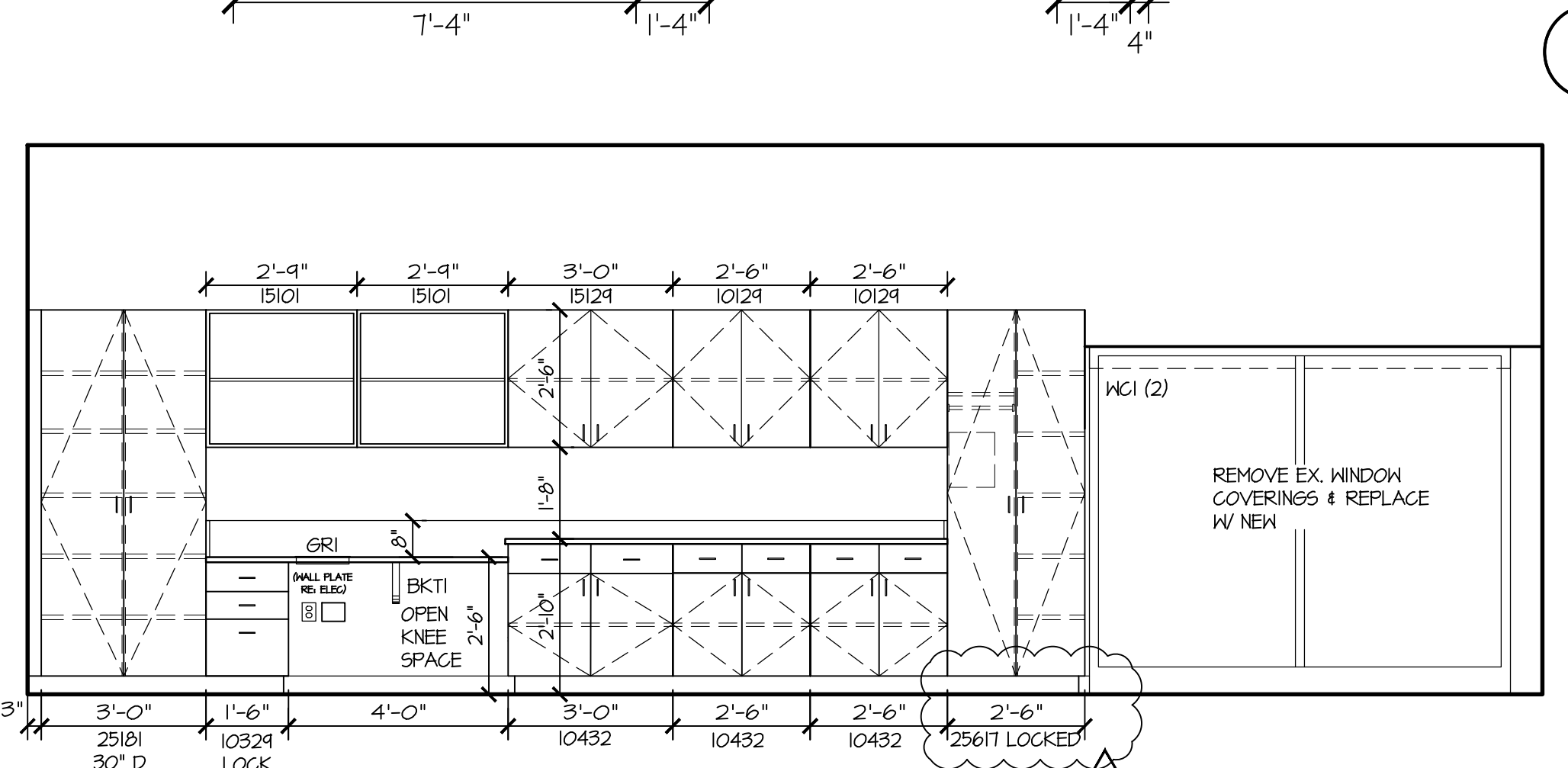
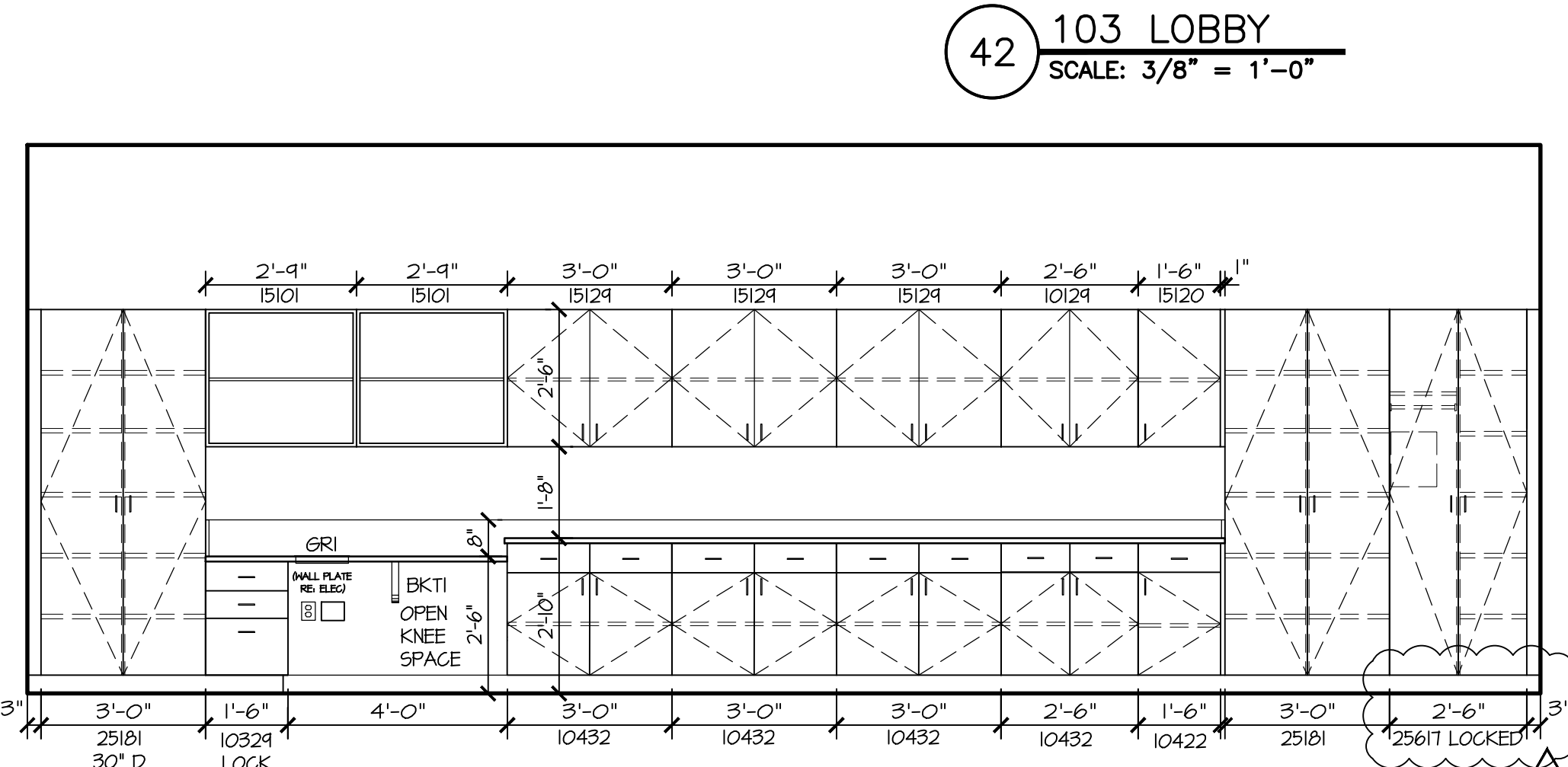
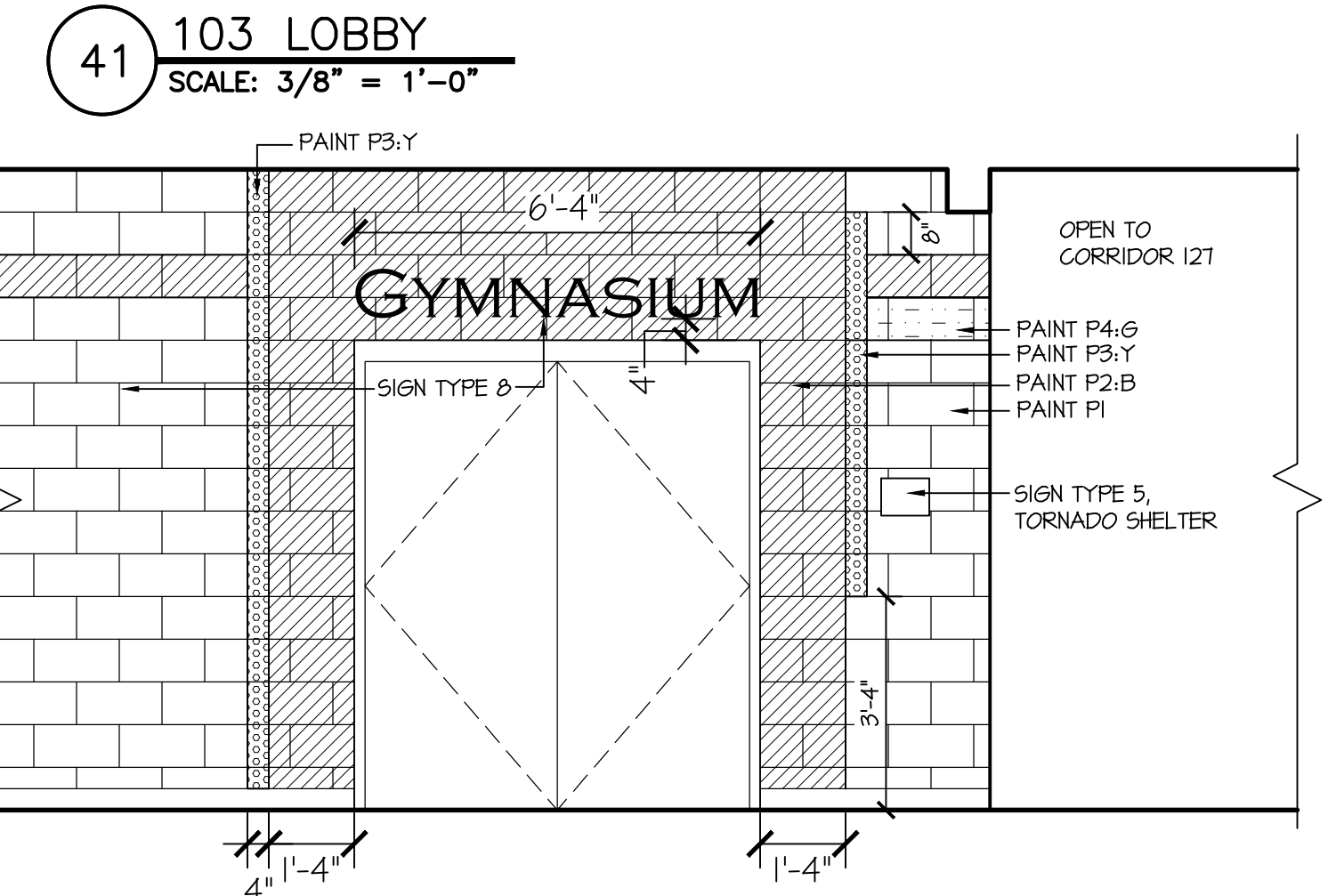
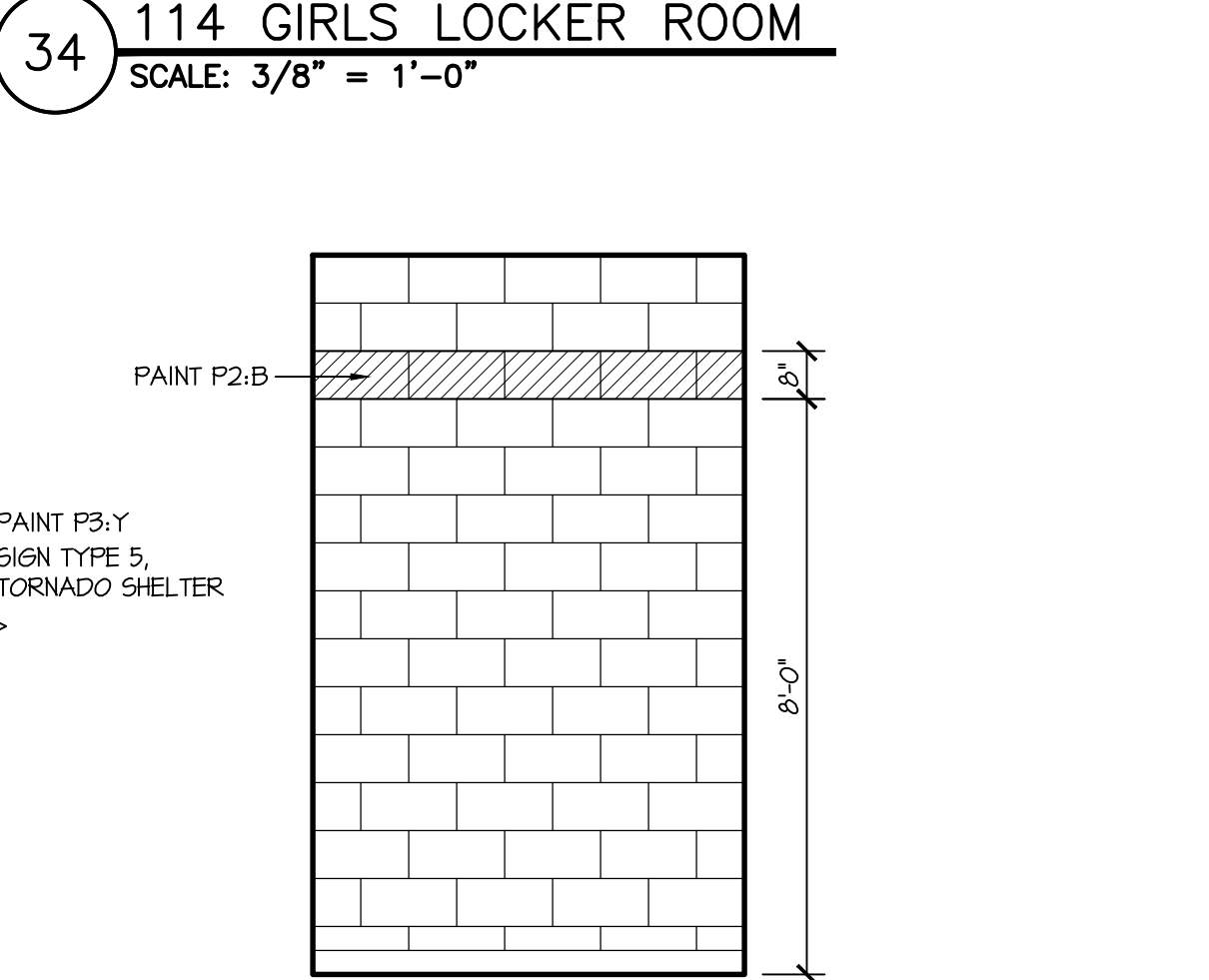
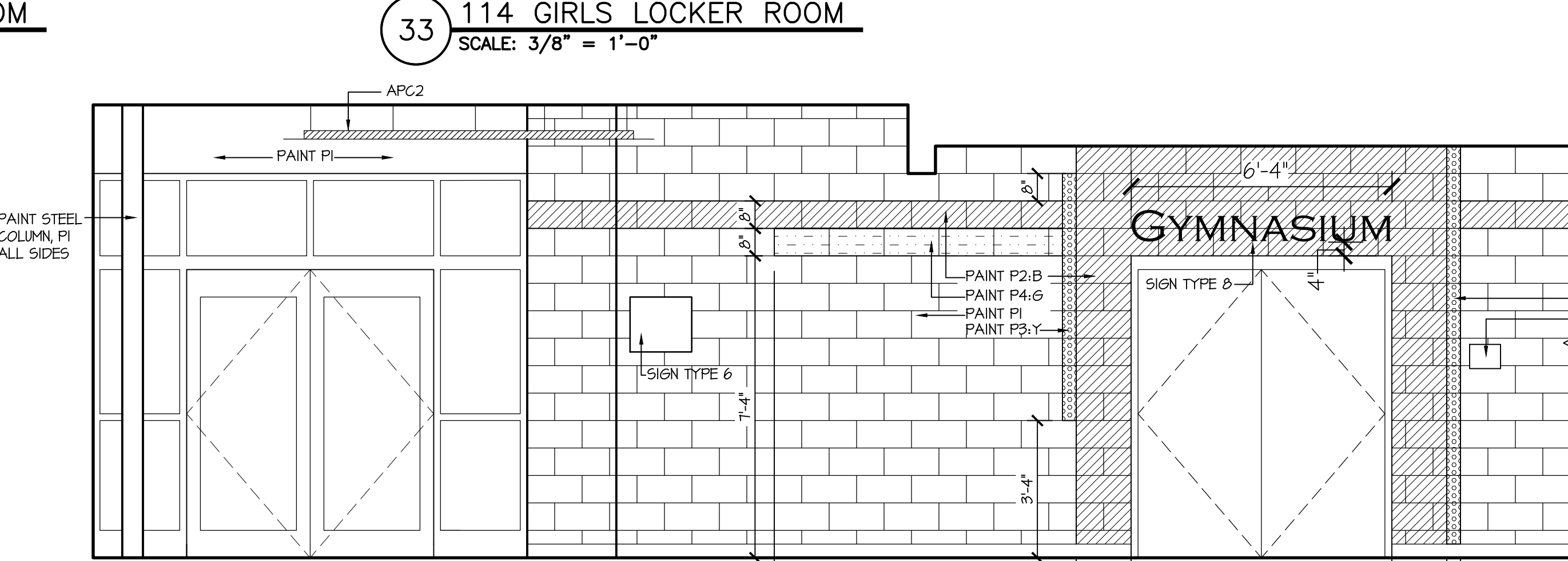
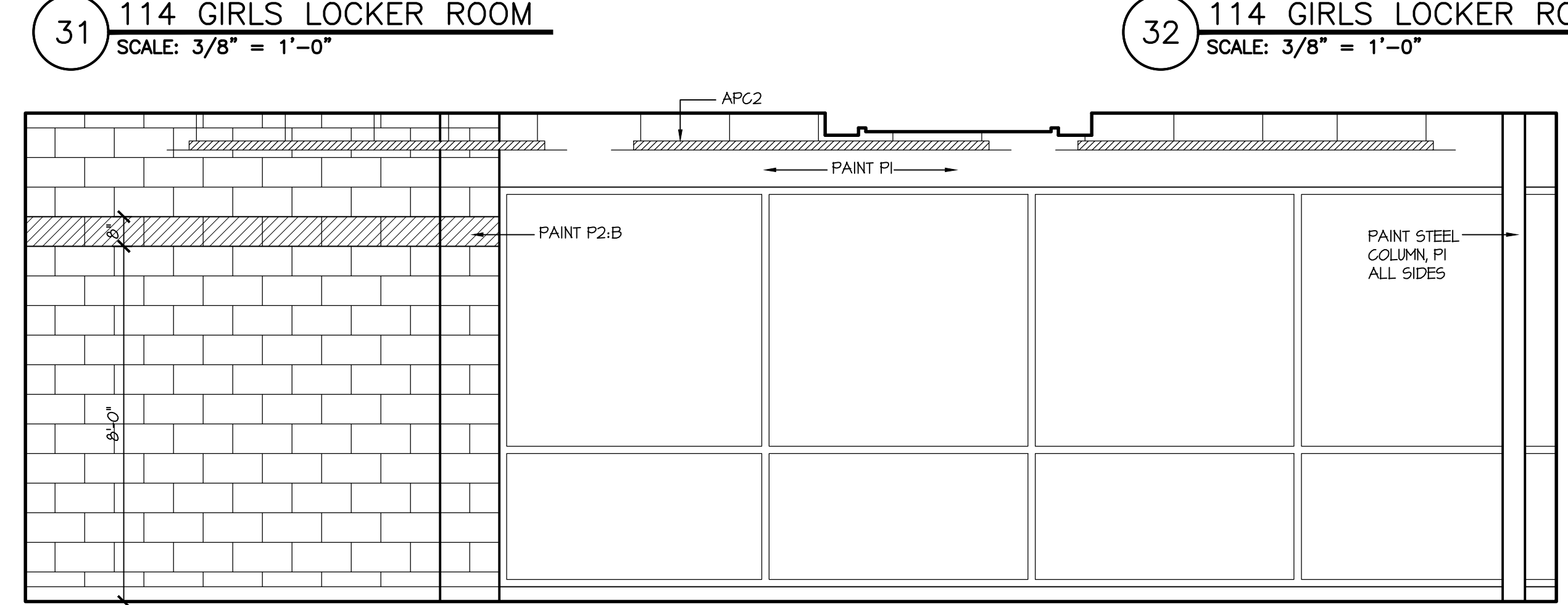
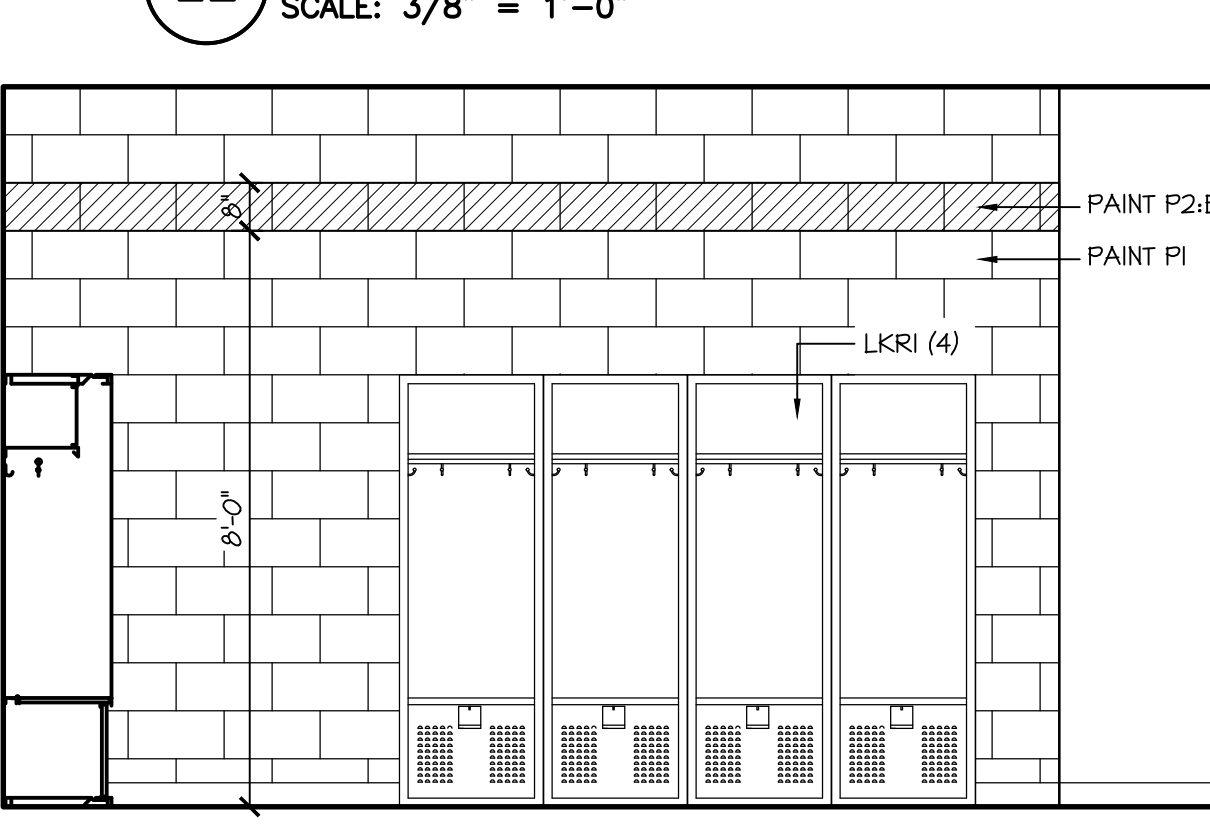
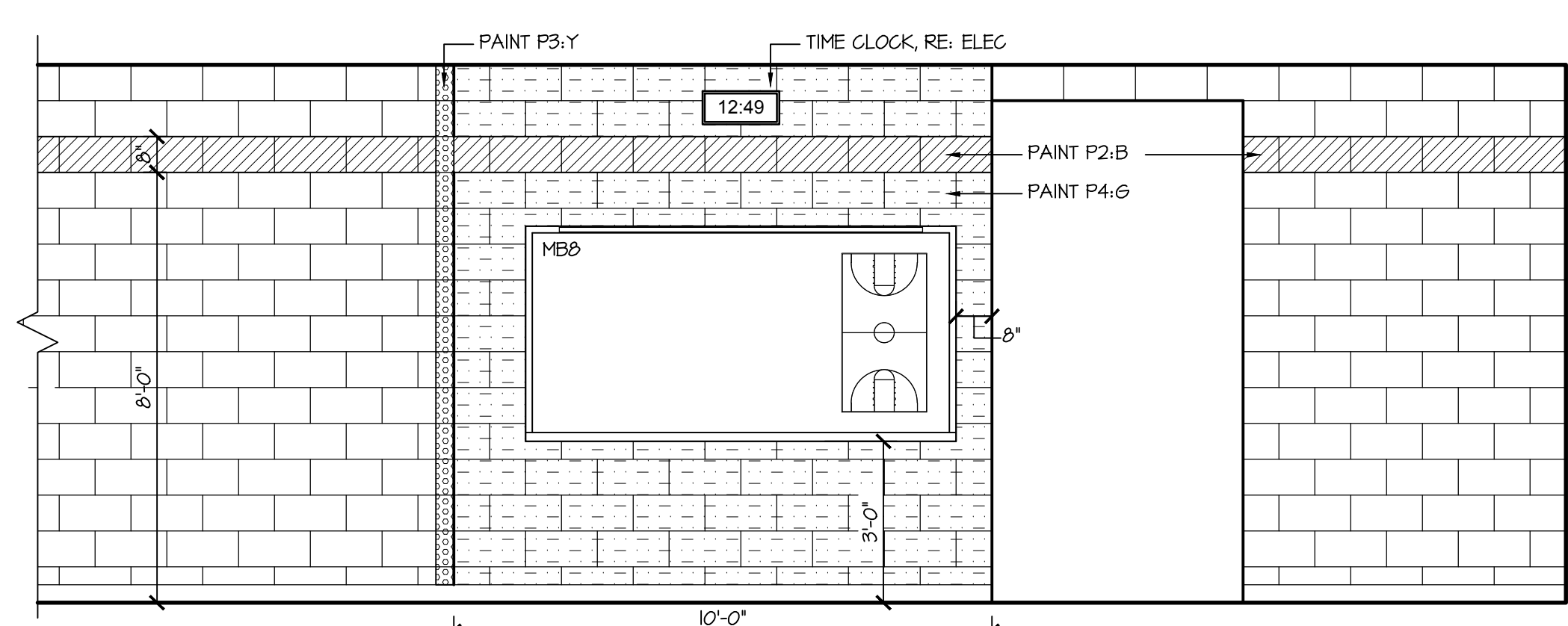
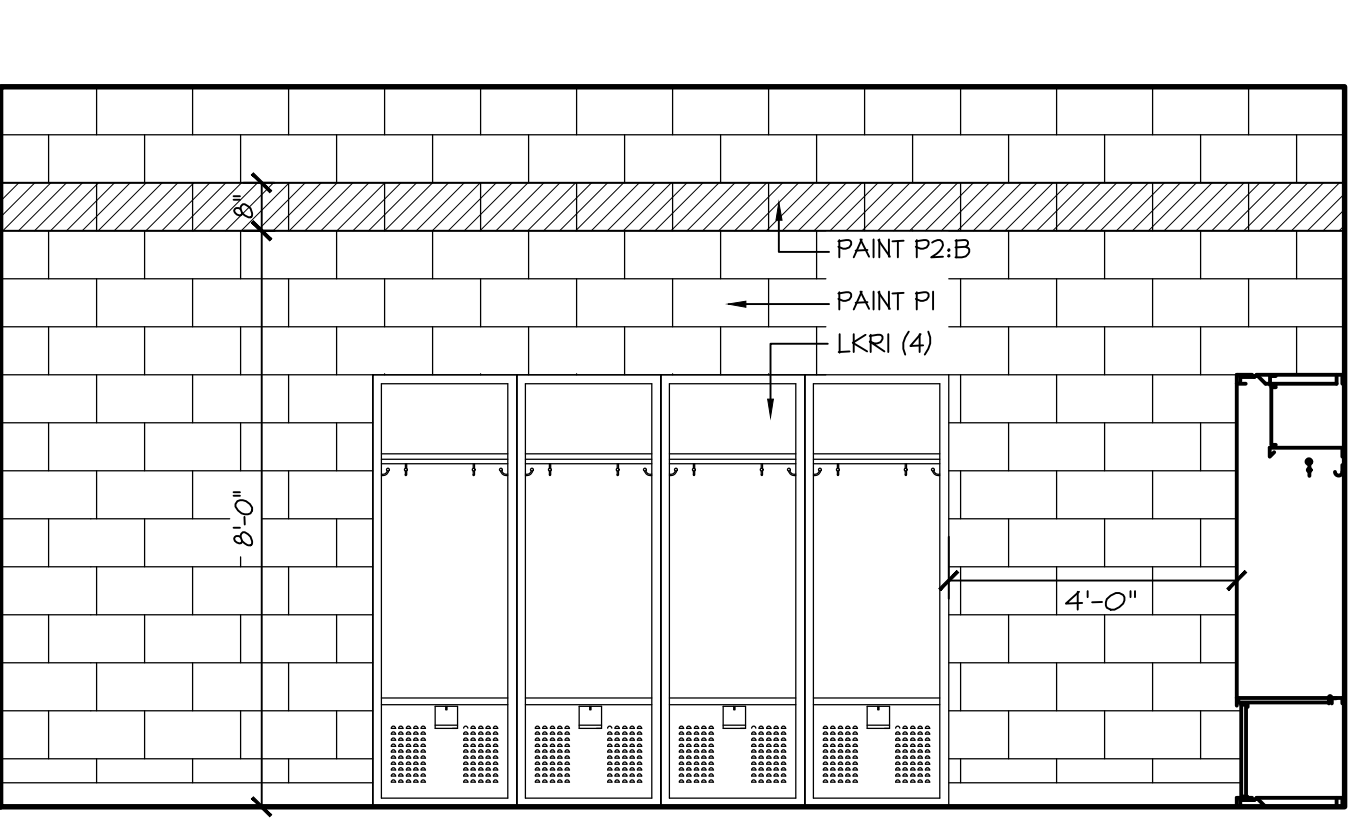
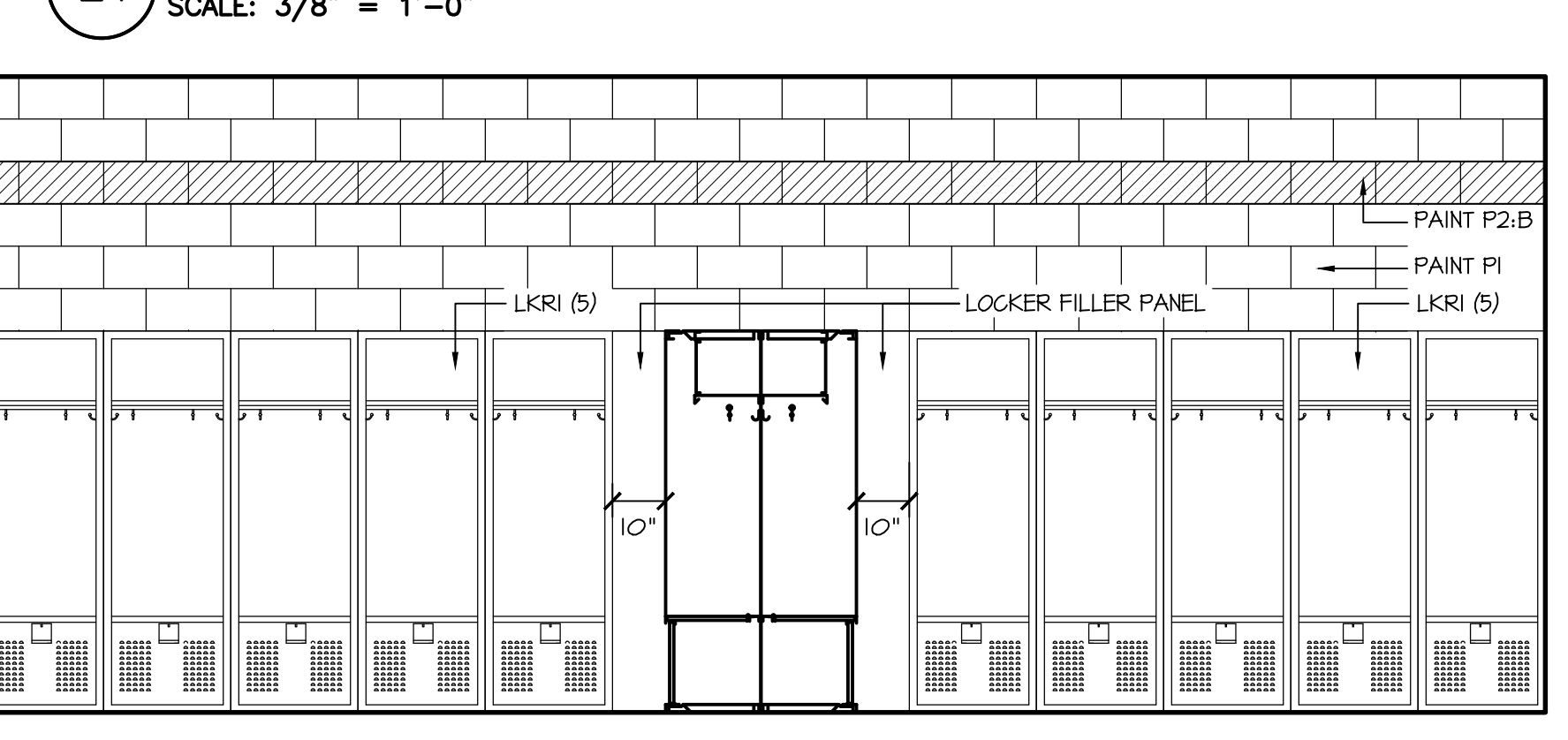
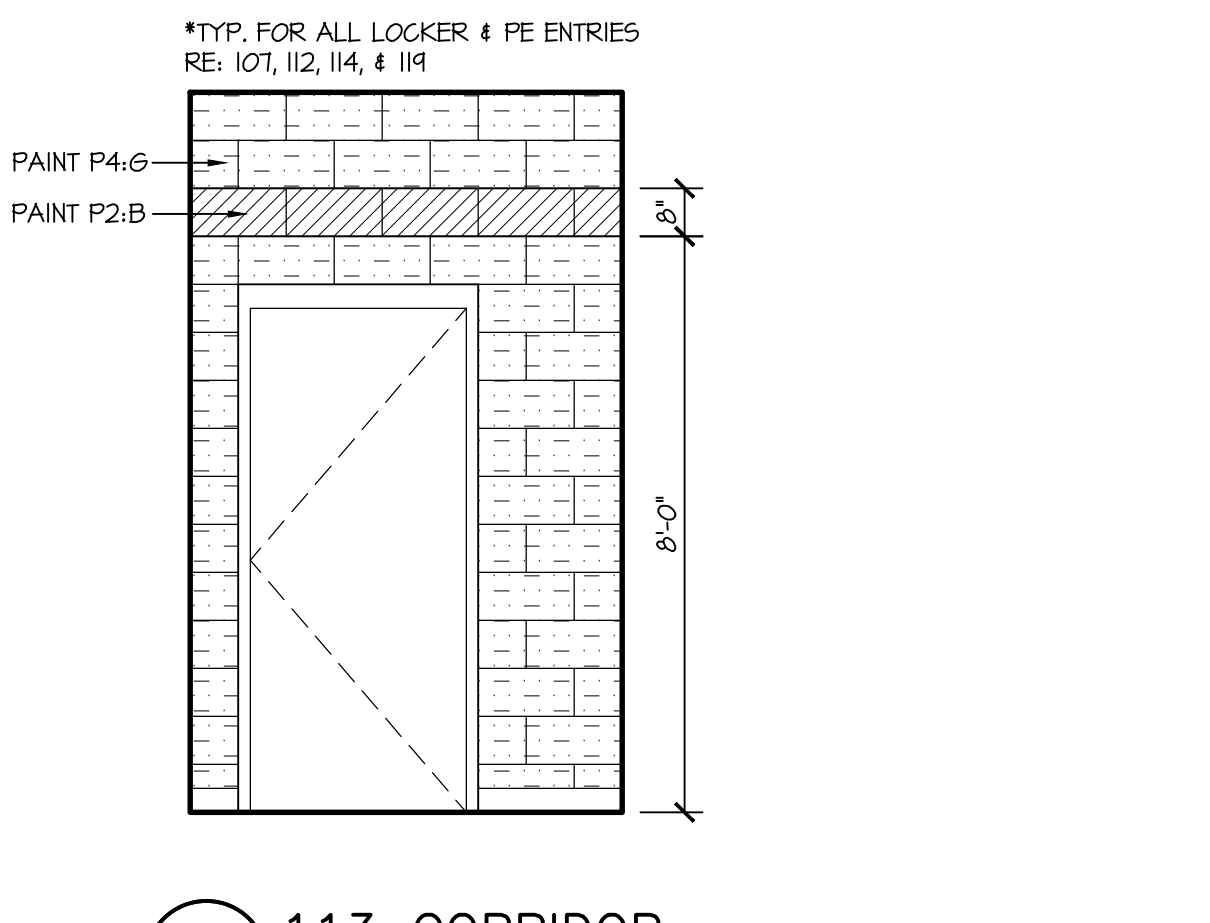
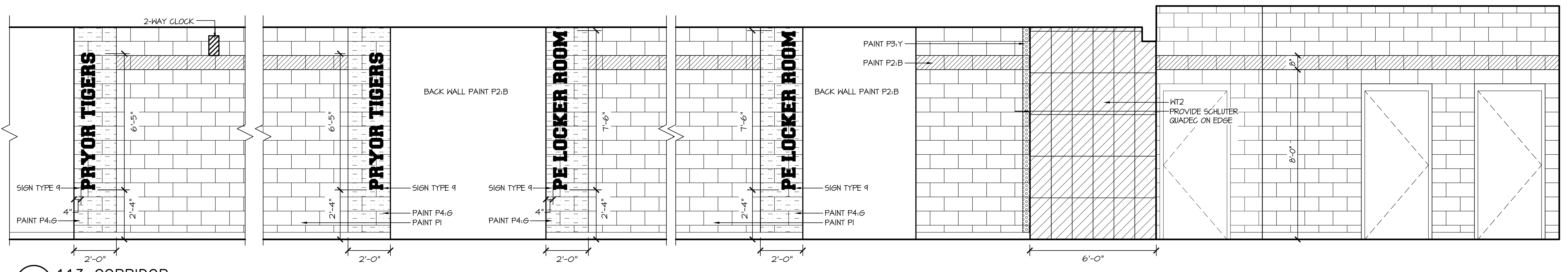
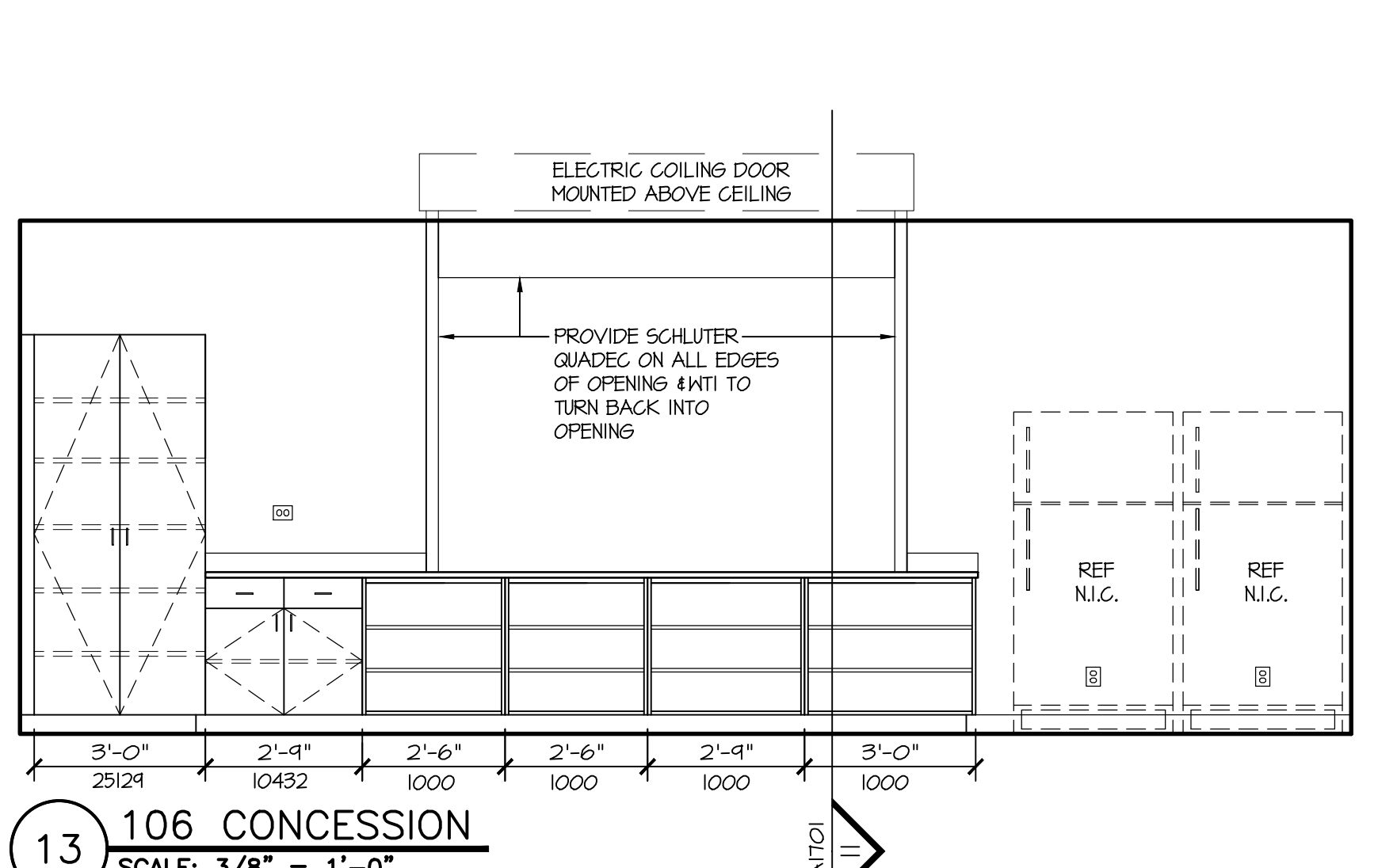
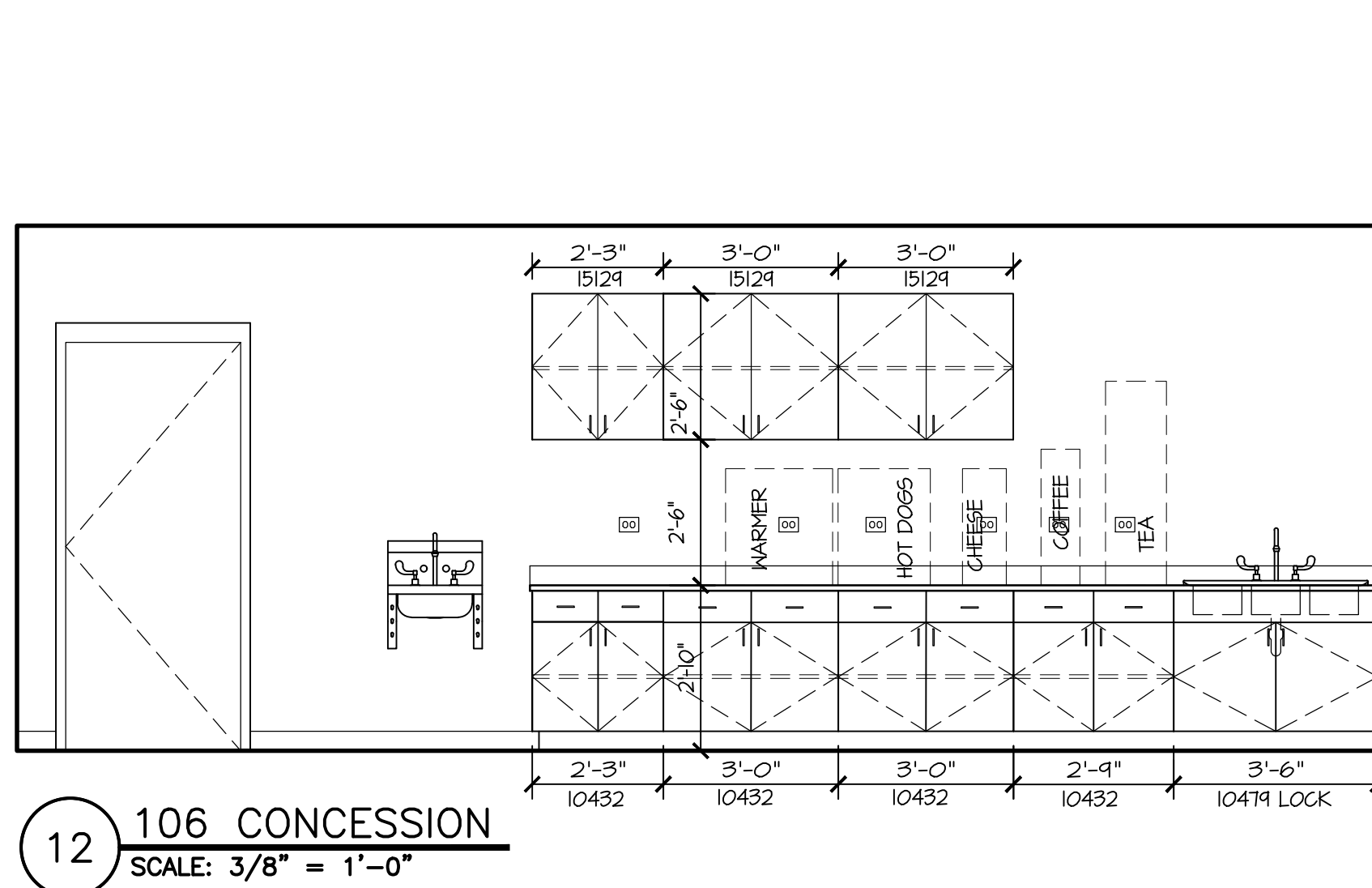
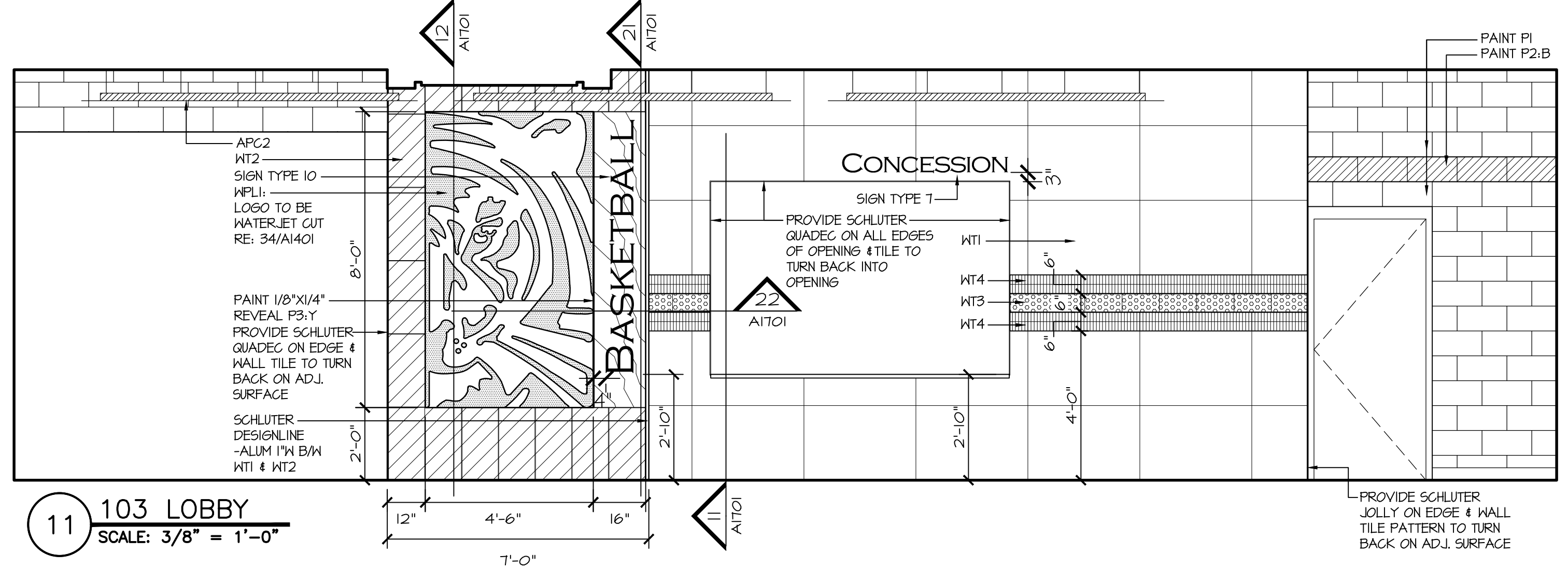
AD4 ADDENDUM #4 10.22.19

09.17.19

INTERIOR ELEVATIONS

AI400

These drawings are subject to copyright protection as an "architectural work" under Section 102 of the Copyright Act, 17 U.S.C., as amended on December 1, 1990. The work includes the overall form as well as the arrangement and composition of spaces and elements in the design. These documents are not to be reproduced without the written consent of the stacy group.



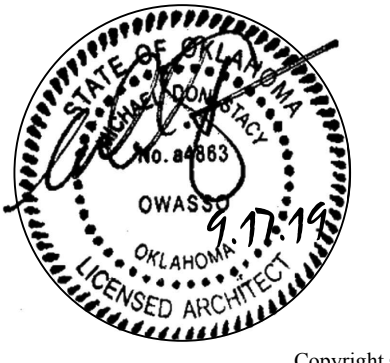
51 130 CORRIDOR
SCALE: 3/8" = 1'-0"

52 135 CLASSROOM
SCALE: 3/8" = 1'-0"

53 140 CLASSROOM
SCALE: 3/8" = 1'-0"

54 127 CORRIDOR
SCALE: 3/8" = 1'-0"

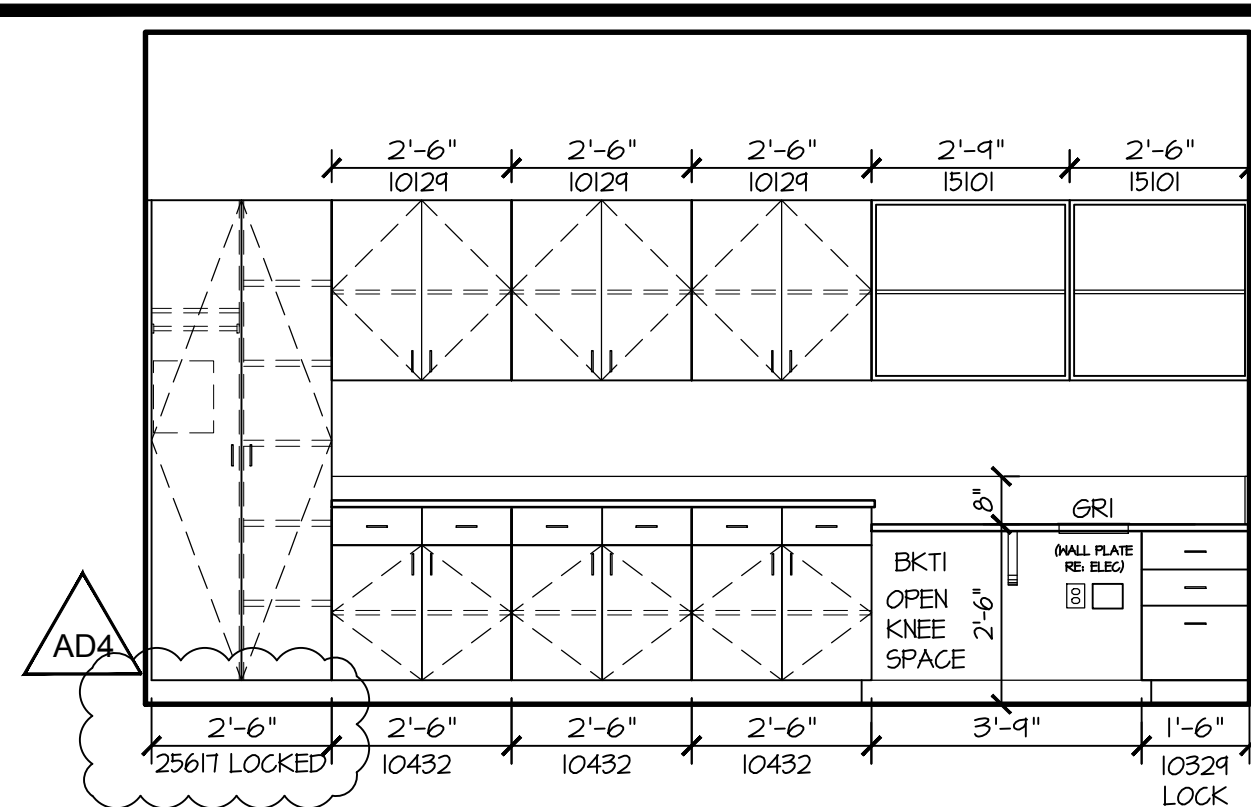
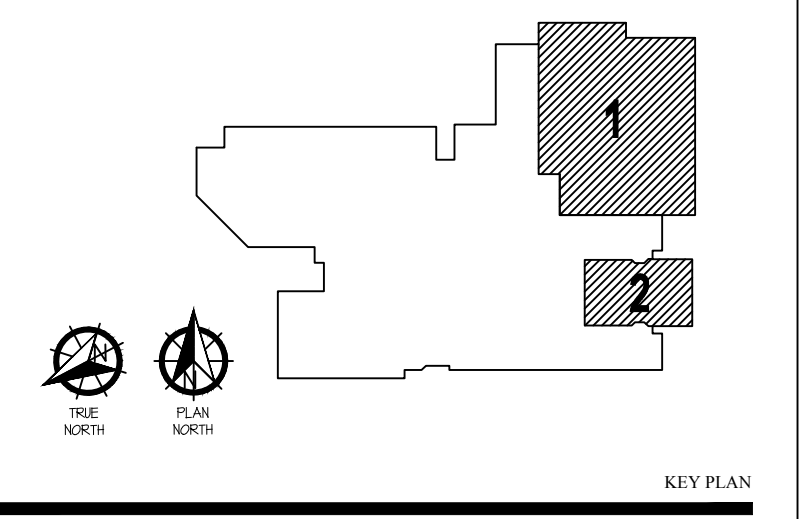
Vertical scale bars on the left side of the page, ranging from 1/16" = 1'-0" to 3/4" = 1'-0".



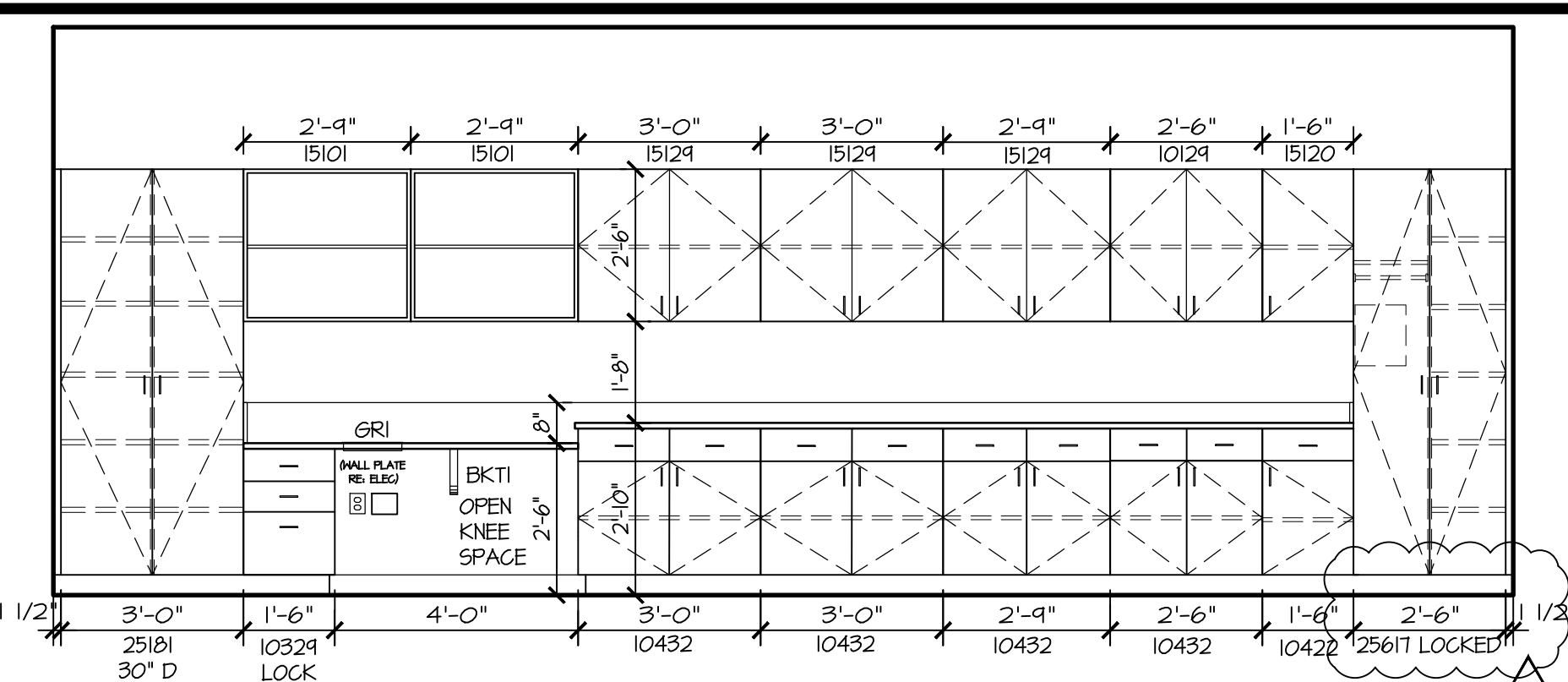
Copyright © the.stacy.group

JUNIOR HIGH SHELTER ADDITION

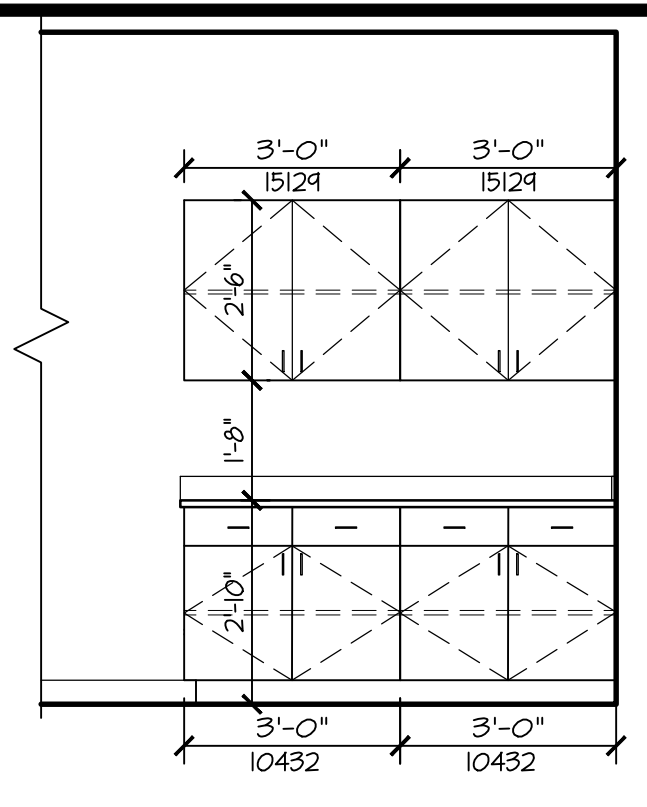
PRYOR PUBLIC SCHOOLS
PRYOR, OK
2019



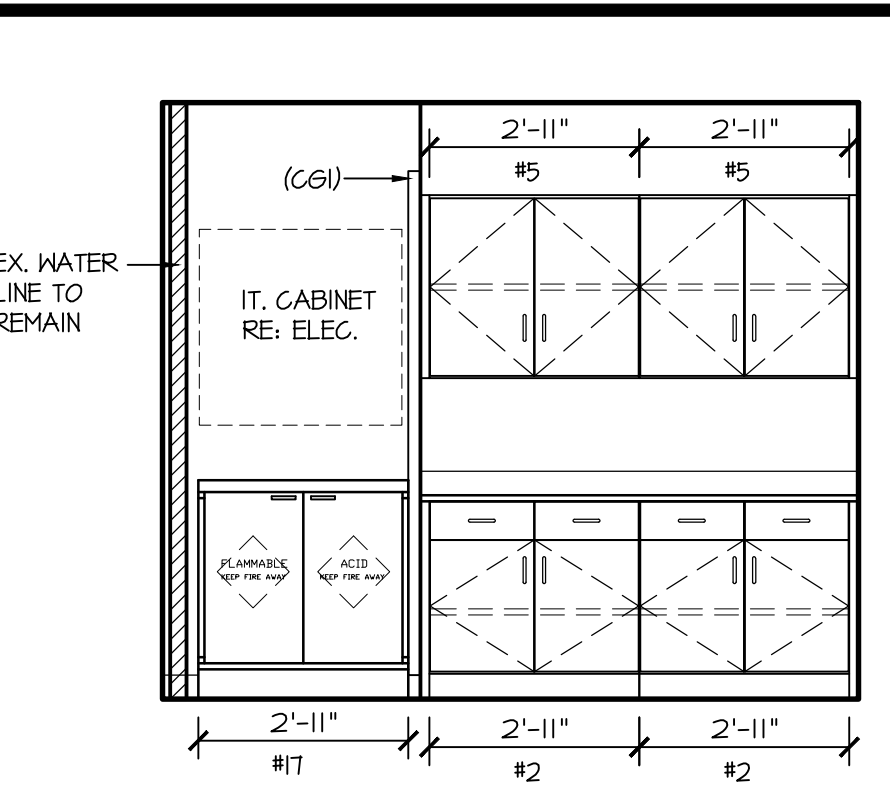
11 123 CLASSROOM
SCALE: 3/8" = 1'-0"



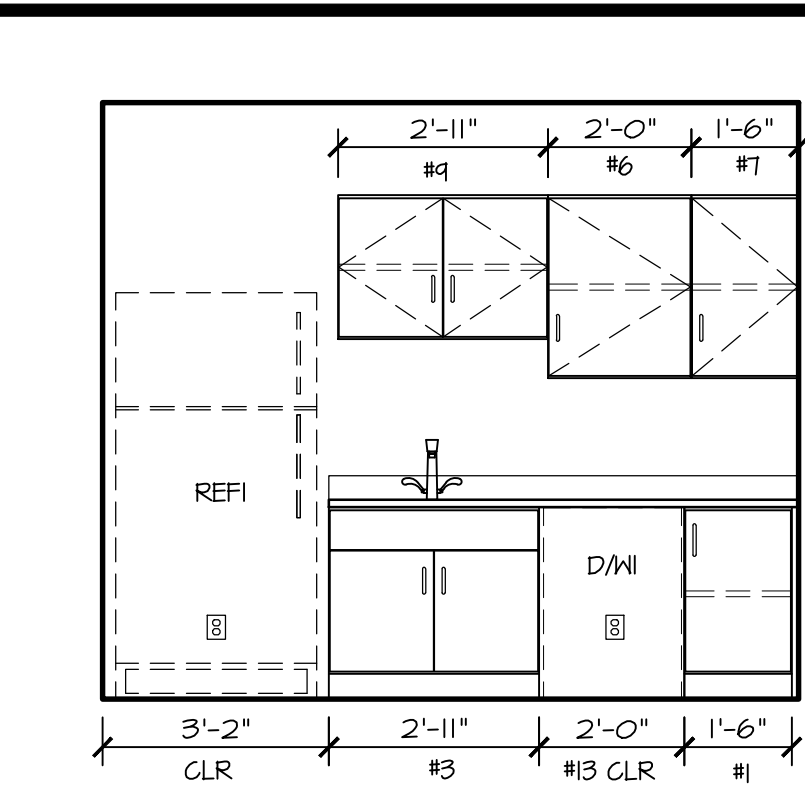
12 129 CLASSROOM
SCALE: 3/8" = 1'-0"



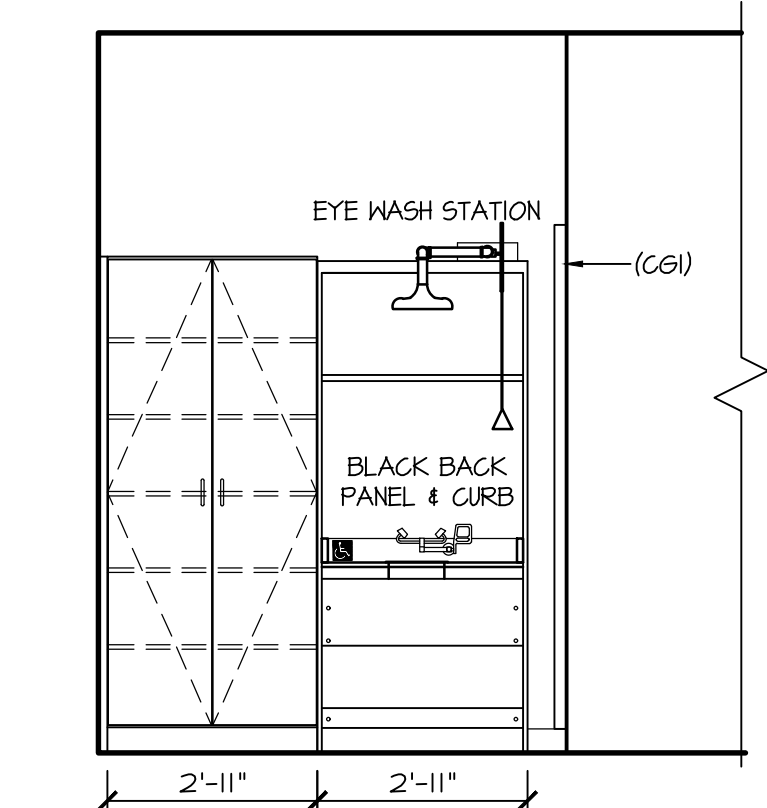
13 140 CLASSROOM
SCALE: 3/8" = 1'-0"



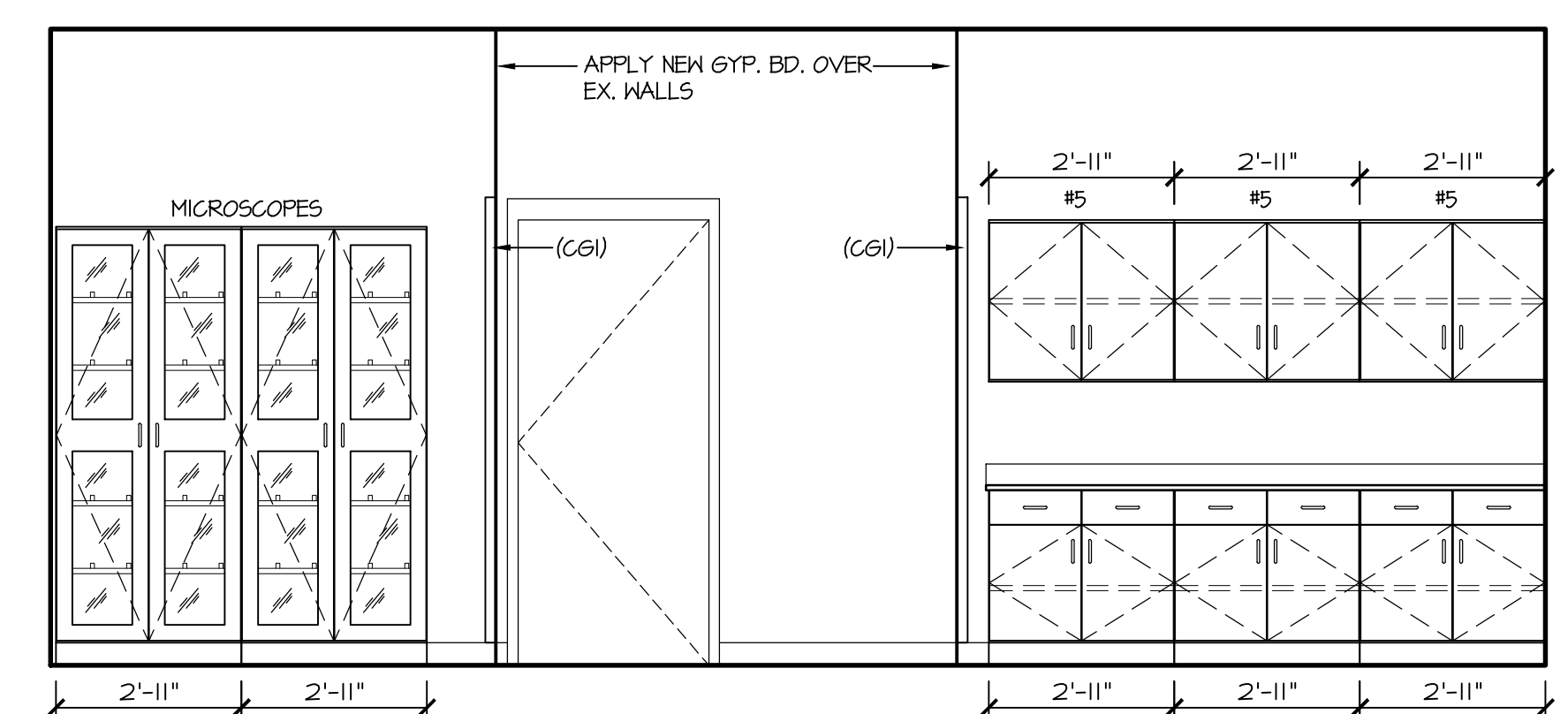
14 137 STORAGE
SCALE: 3/8" = 1'-0"



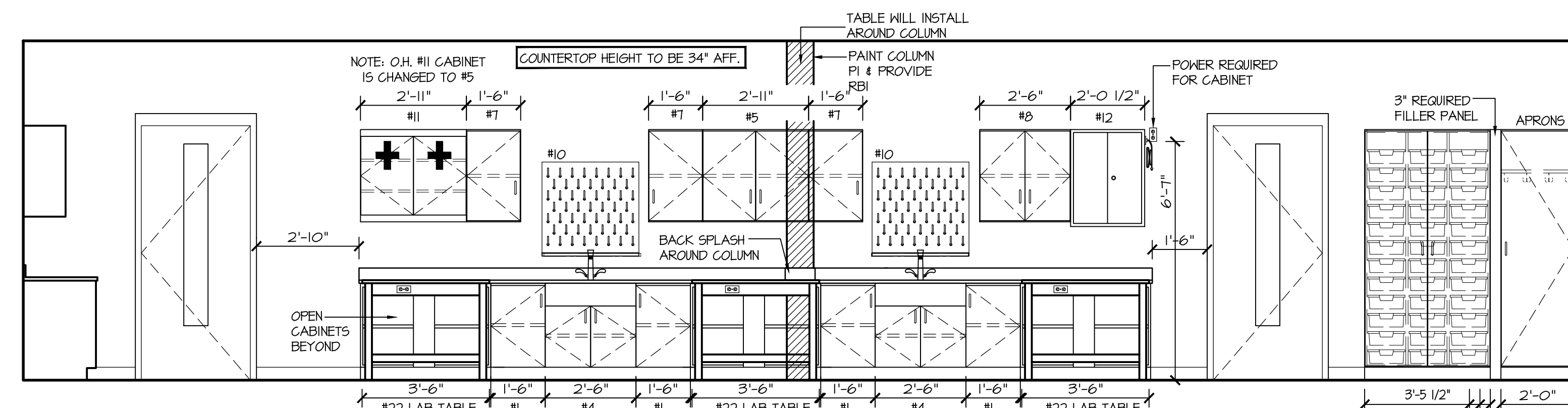
15 137 STORAGE
SCALE: 3/8" = 1'-0"



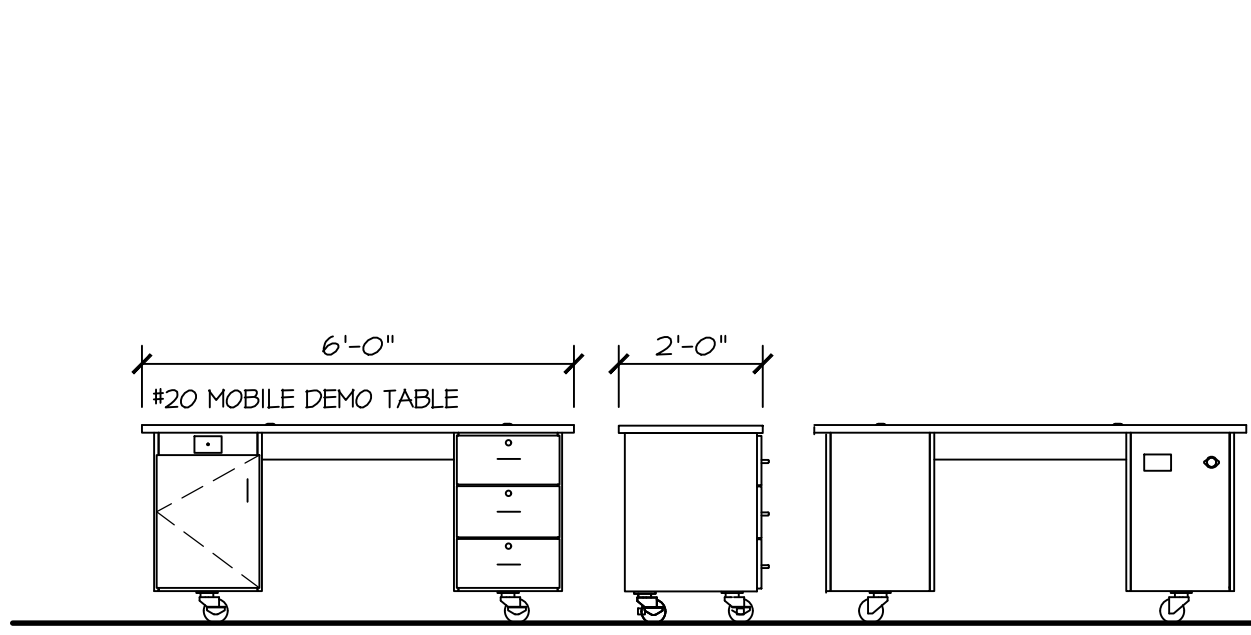
21 138 LAB
SCALE: 3/8" = 1'-0"



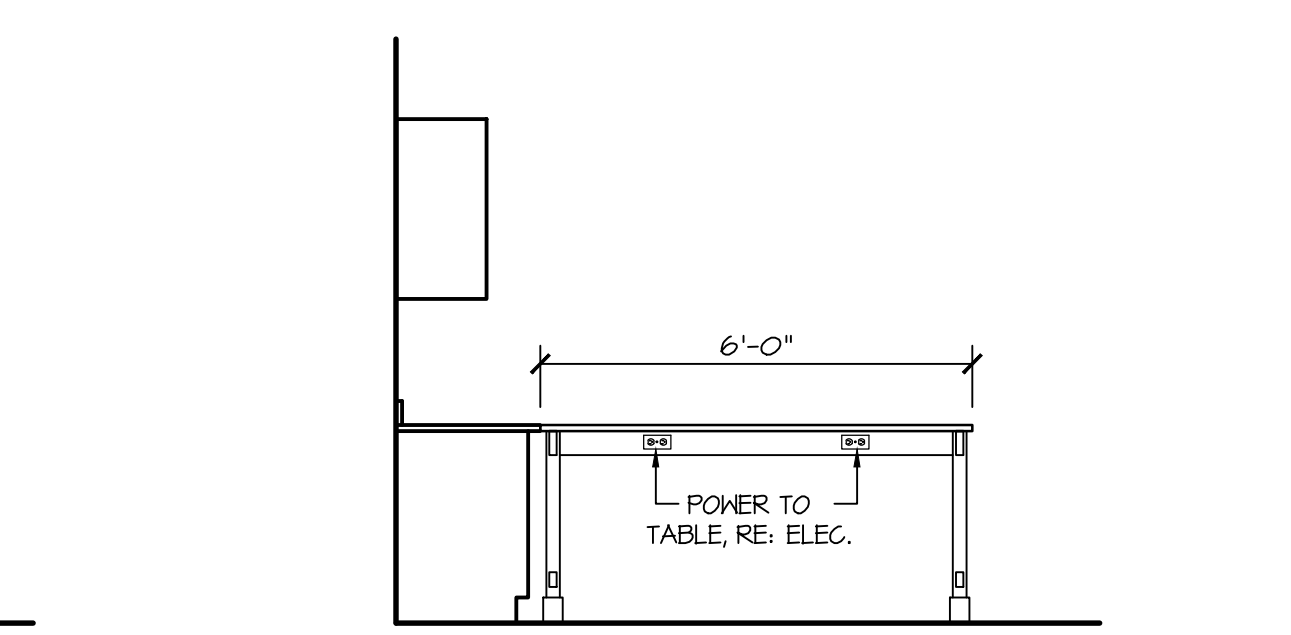
22 138 LAB
SCALE: 3/8" = 1'-0"



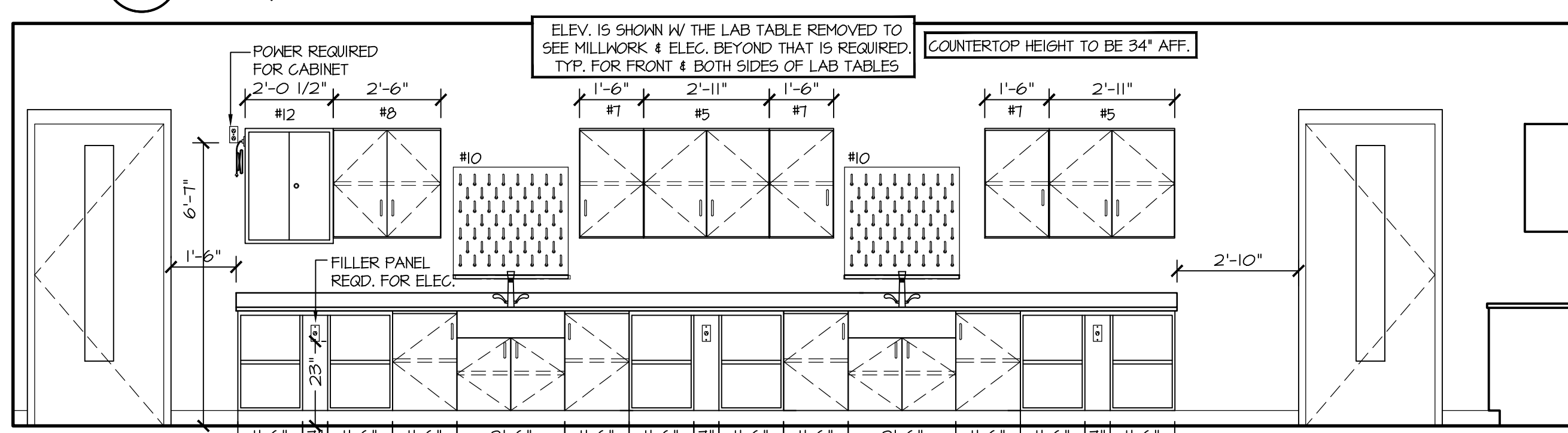
23 138 LAB
SCALE: 3/8" = 1'-0"



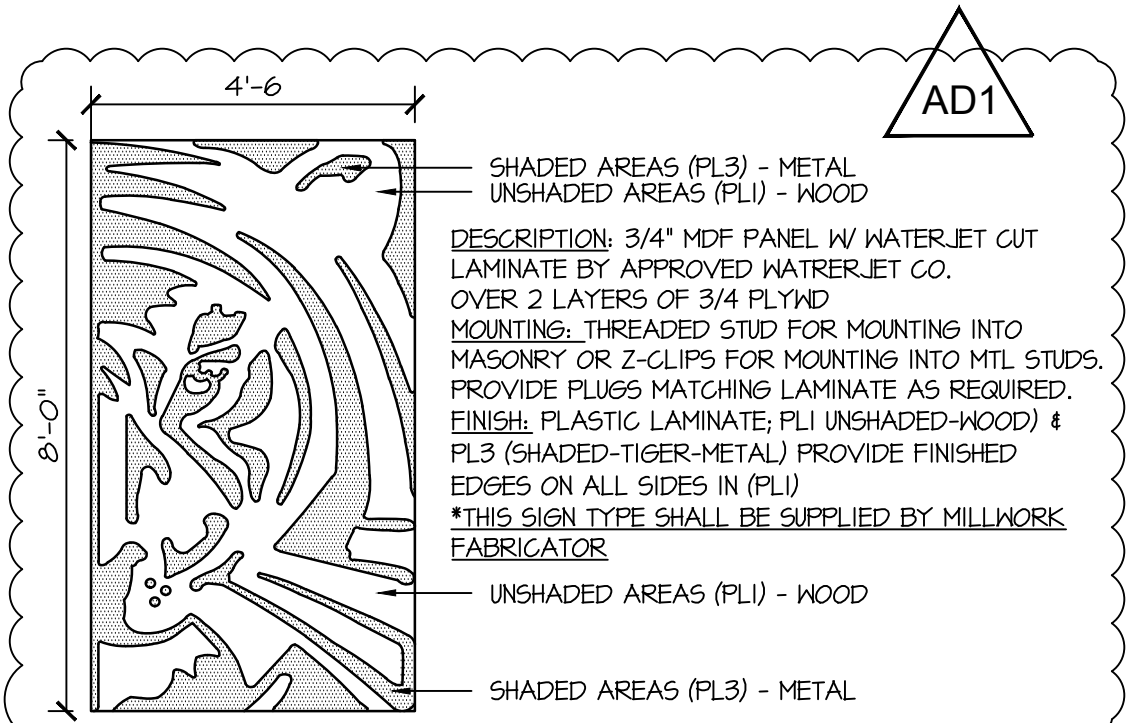
31 DEMO TABLE
SCALE: 3/8" = 1'-0"



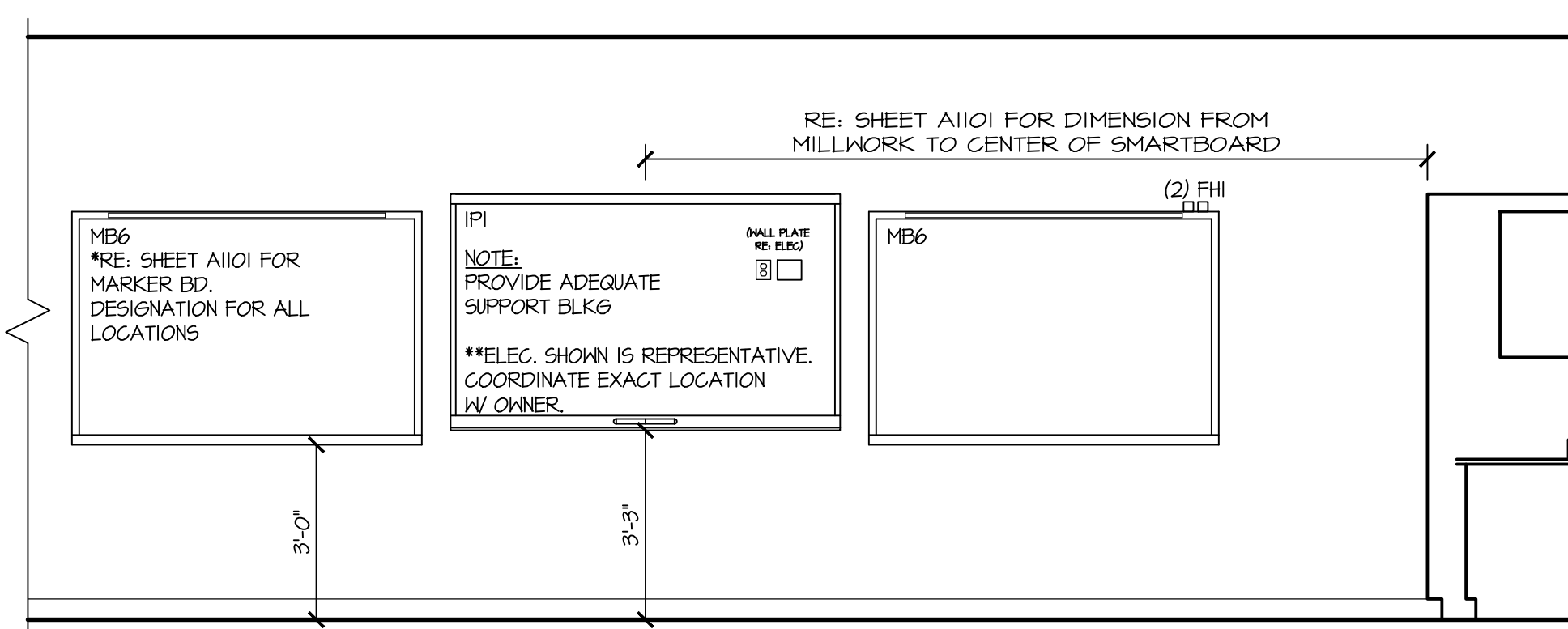
32 DEMO TABLE
SCALE: 3/8" = 1'-0"



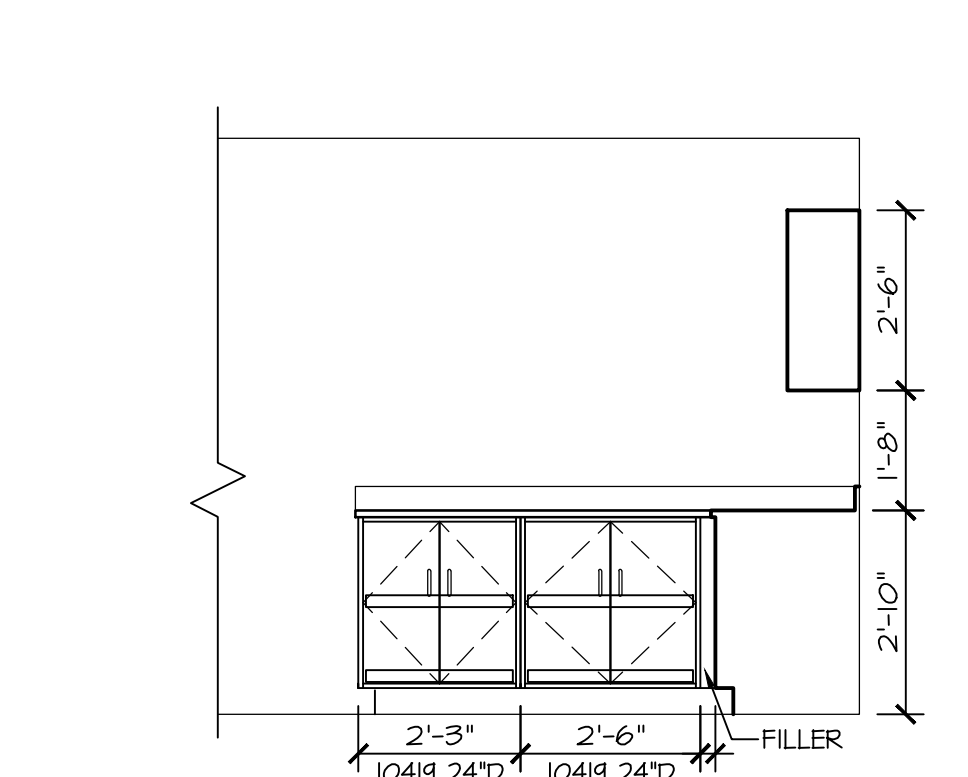
33 DEMO TABLE
SCALE: 3/8" = 1'-0"



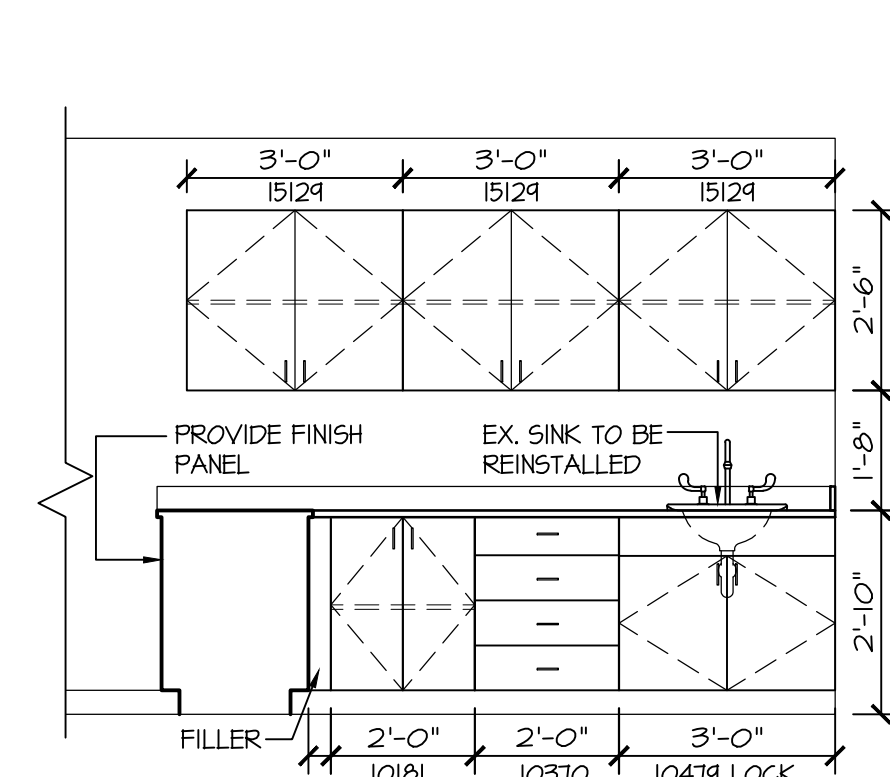
34 WALL PANEL (WPL1)
SCALE: 3/8" = 1'-0"



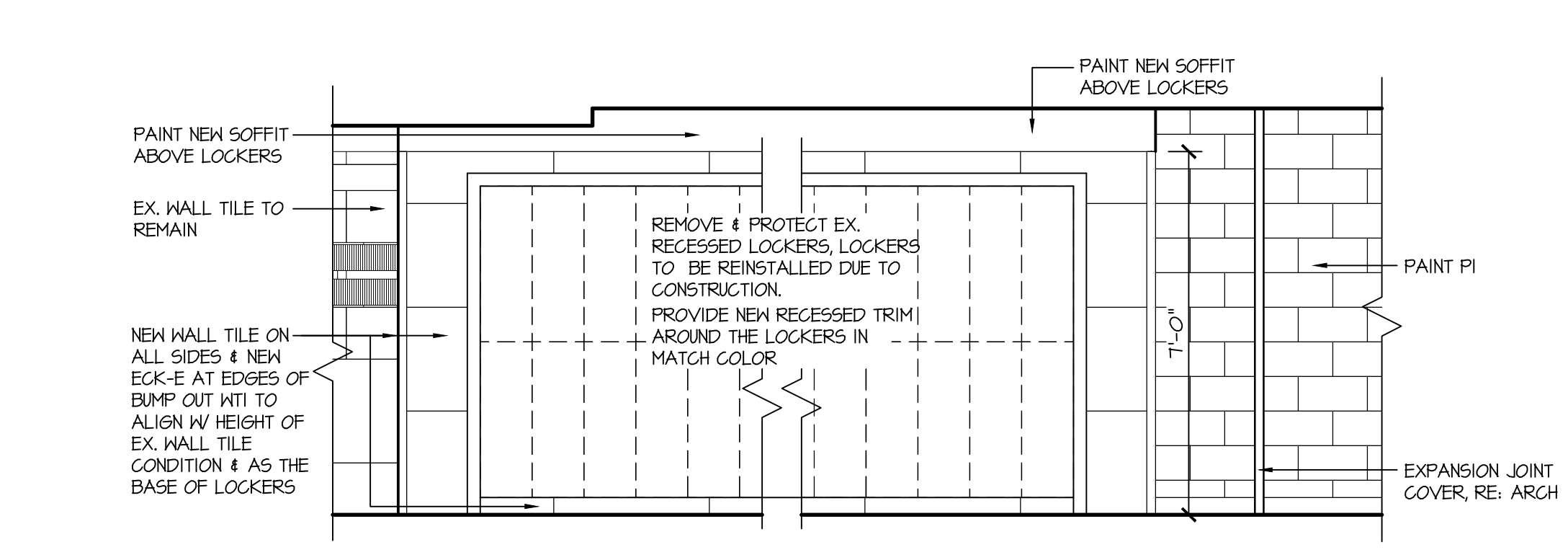
41 TEACHERS WALL
SCALE: 3/8" = 1'-0"



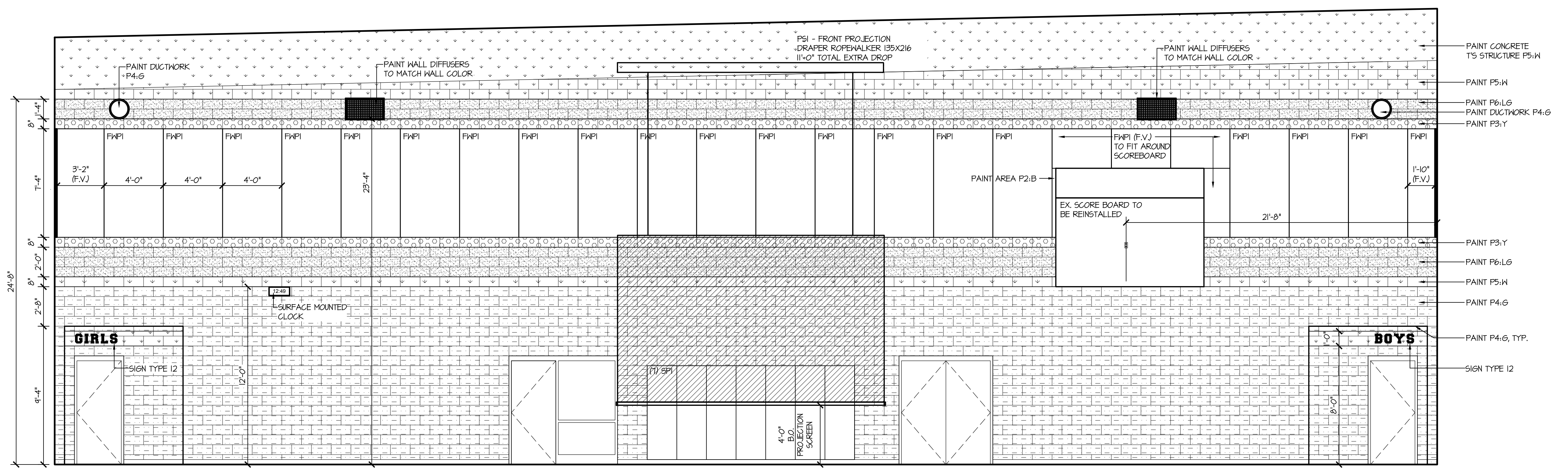
42 EX. MUSIC LIBRARY
SCALE: 3/8" = 1'-0"



43 EX. MUSIC LIBRARY
SCALE: 3/8" = 1'-0"



44 EX. CORRIDOR
SCALE: 3/8" = 1'-0"



51 130 GYM
SCALE: 1/4" = 1'-0"

ADA ADDENDUM #4 10.22.19
ADDENDUM #1 10.11.19

09.17.19

INTERIOR ELEVATIONS

AI401

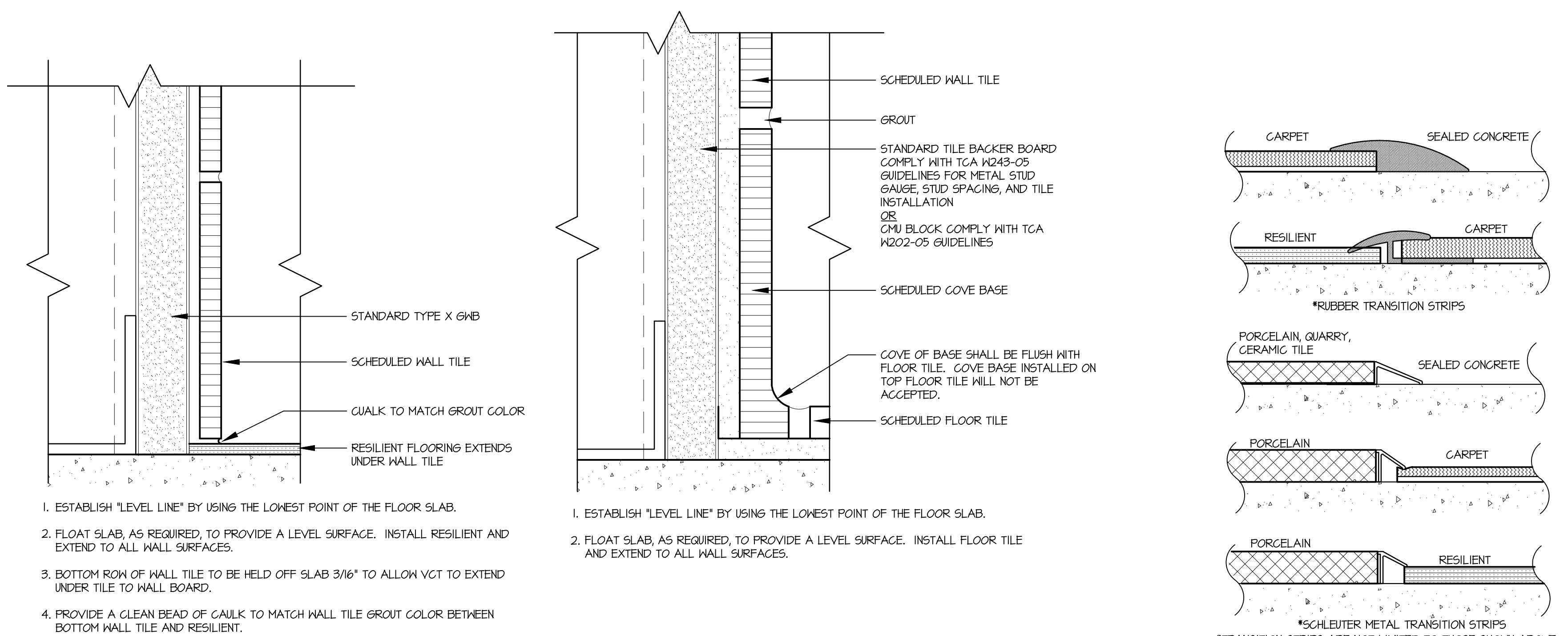
These drawings are subject to copyright protection as an "architectural work" under Section 102 of the Copyright Act, 17 U.S.C., as amended on December 1, 1990. The work includes the overall form as well as the arrangement and composition of spaces and elements in the design. These documents are not to be reproduced without the written consent of the.stacy.group.

SPECIALTIES SCHEDULE

CODE	DESCRIPTION	MANUFACTURER	PRODUCT NO.	DIMENSIONS	FINISH	REMARKS
DIVISION 6 - ARCHITECTURAL WOODWORK						
GRI	GROMMET, 1" PAPER SLOT GROMMET W/ G-SHAPE WIRE MANAGER	DOUG MOCKETT	PAPER SLOT- GFI 6-SHAPE WIRE MGR-1M4	PAPER SLOT- 1" WIRE MGR- 12"	PAPER SLOT- BLACK WIRE MGR- BLACK	RE: "A1" SHEET SERIES FOR LOCATIONS WIRE MGR- MOUNT BELOW COUNTERTOP
BK11	WORKSTATION METAL BRACKET	A4M HARDWARE, INC.		AS APPROPRIATE FOR COUNTER DEPTH	COLOR: BLACK	RE: "A1" SHEET SERIES FOR LOCATIONS
DIVISION 10 - VISUAL DISPLAY BOARDS						
IP1	INTERACTIVE PANEL				RE: ELEC. FOR ELEC. REQUIREMENTS	OWNER TO PROVIDE AND CONTRACTOR TO INSTALL
FH1	STEEL SCHOOL FLAG BRACKET	SCHOOL SPECIALTY	1067M4		STEEL	MOUNT DIRECTLY ABOVE VISUAL DISPLAY BOARD AS SHOWN IN ELEVATIONS. PROVIDE IN-WALL BLOCKING AS REQ'D.
MB4	LCS PORCELAIN ENAMEL STEEL MAGNETIC MARKERBOARD	CLARIDGE	SERIES 4	4'-0" X 4'-0"	SATIN ANODIZED ALUMINUM FRAME	
MB6	LCS PORCELAIN ENAMEL STEEL MAGNETIC MARKERBOARD	CLARIDGE	SERIES 4	6'-0" X 4'-0"	SATIN ANODIZED ALUMINUM FRAME	
MB8	LCS PORCELAIN ENAMEL STEEL MAGNETIC MARKERBOARD	CLARIDGE	SERIES 4	8'-0" X 4'-0"	SATIN ANODIZED ALUMINUM FRAME	PROVIDE BASKETBALL DIAGRAM IN RM 114 & 119, RE:35/A1400
TB4	TACKBOARD - VINYL ON CORK ON 1/2" DURAGORE	CLARIDGE	SERIES 4	4'-0" X 4'-0"	SATIN ANODIZED ALUM. W/ FABRICORX MESH CONSELOR	
TB6	TACKBOARD - VINYL ON CORK ON 1/2" DURAGORE	CLARIDGE	SERIES 4	6'-0" X 4'-0"	SATIN ANODIZED ALUM. W/ FABRICORX MESH CONSELOR	
TB8	TACKBOARD - VINYL ON CORK ON 1/2" DURAGORE	CLARIDGE	SERIES 4	8'-0" X 4'-0"	SATIN ANODIZED ALUM. W/ FABRICORX MESH CONSELOR	
DIVISION 10 - TOILET COMPARTMENTS						
TP1	TOILET PARTITION - FLOOR MOUNTED, OVERHEAD BRACED	SCRANTON	GRIP X SOLID PLASTIC		COLOR: BLACK	
TP2	URINAL PARTITION - FLOOR MOUNTED, OVERHEAD BRACED	SCRANTON	GRIP X SOLID PLASTIC		COLOR: BLACK	
DIVISION 10 - SHEETWALL PROTECTION						
CG1	SURFACE-MOUNTED CORNER GUARDS	KOROGARD	6100	2" X 2" X 1'-0"	TBD	
DIVISION 10 - LOCKERS						
LK11	W/VA ATHLETIC LOCKER - FLAT TOP, UPPER OPEN STG W/ 1 LOCKABLE COMPARTMENT	REPUBLIC	SINGLE	24" X 18" X 12" OVERALL	POWDER COAT COLOR: 85 TRUE NAVY	W/ FOOT LOCKER COMPARTMENT - LOCK BY OWNER
LK12	HEAVY DUTY VENTILATED LOCKERS LOCKERS - W/ SLOPE TOP, RECESSED HANDLE	REPUBLIC	DOUBLE TIER	18" X 18" X 36" W/ 12" OVERALL	POWDER COAT COLOR: 85 TRUE NAVY	LOCK BY OWNER
DIVISION 10 - TOILET, BATH, AND LAUNDRY ACCESSORIES						
EHD1	ELECTRIC HAND DRYER	BRADLEY	2902-2814	11-5/8" X 10-5/8" X 4"D	STAINLESS STEEL	
SG1	ELECTRIC HAND DRYER SPLASH GUARD	XLERATOR	4845	5" FLASH GUARD, 31-3/4" X 15-3/4" X 1/8"	STAINLESS STEEL	PROVIDE (56) AT ALL LOCATIONS OF EHD, INSTALL BELOW ELECTRIC HAND DRYER
GB1	GRAB BARS - 1/2" O.D. CONCEALED MOUNT	BRADLEY	SERIES 812	1'-6" L REFER TO ENLARGED PLANS	STAINLESS STEEL	RE: SPECIALTIES MOUNTING HEIGHTS
GB2	GRAB BARS - 1/2" O.D. CONCEALED MOUNT	BRADLEY	SERIES 812	3'-6" L REFER TO ENLARGED PLANS	STAINLESS STEEL	RE: SPECIALTIES MOUNTING HEIGHTS
GB3	GRAB BARS - 1/2" O.D. CONCEALED MOUNT	BRADLEY	SERIES 812	3'-0" L REFER TO ENLARGED PLANS	STAINLESS STEEL	RE: SPECIALTIES MOUNTING HEIGHTS
GB4	GRAB BARS - 1/2" O.D. CONCEALED MOUNT	BRADLEY	SERIES 800-036 OR 031	A,24", B,24", C,34" T	STAINLESS STEEL	RE: SPECIALTIES MOUNTING HEIGHTS
HK1	COAT HOOK	BRADLEY	4124	PROJECT 2 1/4"	SATIN STAINLESS STEEL	
M1	CHANNEL FRAMED MIRROR	BRADLEY	781-2460	24" X 60"	STAINLESS STEEL TRIM	RE: SPECIALTIES MOUNTING HEIGHTS
M2	CHANNEL FRAMED MIRROR	BRADLEY	781-1830	18" X 30"	STAINLESS STEEL TRIM	RE: SPECIALTIES MOUNTING HEIGHTS
SC1	SHOWER CURTAIN & CURTAIN HOOKS	BRADLEY	9531 & 9536	CURTAIN - 48" X 72"	WHITE ANTI-BACTERIAL	
SRI	SHOWER ROD	BRADLEY	9534	FIELD VERIFY	STAINLESS STEEL	
SS1	REVERSIBLE PNEUMATIC SHOWER SEAT	BRADLEY	9564	34-1/2" X 22"	WHITE	
SND1	SANITARY NAPKIN DISPOSAL, SURFACE MOUNT	BRADLEY	4722-15	10-3/4" X 4"D X 15-1/8" H	STAINLESS STEEL	RE: SPECIALTIES MOUNTING HEIGHTS
US1	UTILITY SHELF	BRADLEY	9433	34" X 14" X 4"D	STAINLESS STEEL	RE: SPECIALTIES MOUNTING HEIGHTS
NOTES: 1. ALL SOAP DISPENSERS (SD1), TOILET TISSUE DISPENSERS (TTD1), TOWEL DISPENSERS (TD1) TO BE OWNER PROVIDED; CONTRACTOR INSTALLED. 2. REFER TO SHEET SERIES A200 & A1100 FOR TOILET ACCESSORY LOCATIONS U.N.O. 3. HK1 IS ALSO SHOWN ON SOME OFFICE DOORS, RE: SHEET SERIES A1100 FOR LOCATIONS.						
DIVISION 11 - PROJECTION SCREENS						
PS1	STRUCTURE MOUNTED ELECTRIC SCREEN FOR FRONT PROJECTION (6" X 4")	DRAPER	ROPEHAULER - TAB TENSIONED	195" X 216" DIAGONAL 255" 16:9 HD TV FORMAT	WHITE WHITE SURFACE MATERIAL; MOUNT TO CONCRETE STRUCTURE	11'-0" EXTRA DROP, MAIN CASE & SCREEN CASE COLOR: WHITE
DIVISION 11 - APPLIANCES						
DW1	DISHWASHER - ADA COMPLIANT BUILT-IN	BOSCH 800 SERIES	56X68U55UC	23-1/8" X 32-1/8" X 22-1/8" D	STAINLESS STEEL	IN STORAGE 137
REF1	REFRIGERATOR	GE	6TE2169H5	66-3/4" X 32-1/8" X 24" D	STAINLESS STEEL	IN STORAGE 137
DIVISION 11 - ATHLETIC EQUIPMENT						
BG1	CEILING SUSPENDED, FORWARD FOLD, FRONT BRACED BACKBOARD UNIT W/ ELECTRIC HEIGHT ADJUSTMENT	PORTER	MODEL #40450000		PAINT STEEL PIPE FRAME W/ BLACK ENAMEL FINISH	KEYED OPERATED ELECTRIC WINCH W/ ELECTRIC HEIGHT ADJUSTMENT SYSTEM. MANUFACTURER TO SUPPLY ALL SUPPORTING STEEL FOR BACKSTOPS, RE: SPECS EQUIP. LIST
SCBD	EX (2) SCOREBOARD TO BE REINSTALLED IN LOCATIONS					
SP1	SAFETY PADDING (NYLON REINFORCED VINYL)	PORTER	MODEL # 00946-3	2' X 6'-0" X 2" THICK	NYLON REINFORCED VINYL, COLOR: BLACK	PROVIDE 12" CLIPS FOR MOUNTING
VEB1	VOLLEYBALL EQUIPMENT	PORTER				RE: SPECS FOR ENTIRE (VEB) EQUIP. LIST
BLGH	ELECTRIC POWERED TELESOPING BLEACHERS	HUSSEY	MAXAM SERIES		COLOR: BLACK	RE: SPECS
DIVISION 12 - WINDOW TREATMENT						
WINDOW COVERINGS						
HC1	MANUAL CLUTCH ROLLER SHEERSHADE	DRAPER	FLEXSHADE	RE: A100 FOR WINDOW WIDTHS & HEIGHTS	SHEERSHADE FABRIC: 4800-V60 CLAY	FASCIA PANEL COLOR: BLACK
NOTES: ALL ITEMS ARE CONTRACTOR PROVIDED & INSTALLED UNLESS NOTED OTHERWISE. REFER TO SPECIFICATIONS FOR ADDITIONAL INFORMATION ON ALL ITEMS LISTED. REFER TO SHEET SERIES A200, A1100, & A1400 FOR LOCATIONS OF ALL SPECIALTY ITEMS.						

SPECIALTIES SCHEDULE

SCALE: N.T.S.



MATERIAL FINISH LEGEND

CODE	DESCRIPTION
CEILING "C":	
ACOUSTICAL PANEL CEILING	
APC1	ARMSTRONGS CEILING SYSTEMS PATTERN: SCHOOL ZONE FINE FIGURED #113 SIZE: 2'-0" X 2'-0" X 5/8" EDGE PROFILE: SQUARE GRID: 15/16" PRELUDE
APC2	ARMSTRONGS CEILING SYSTEMS PATTERN: FORMATIONS SQUARE 8' X 8' PANEL: 1113 SCHOOL ZONE FINE FIGURED, SIZE: 2'-0" X 2'-0" W/ 15/16" PRELUDE GRID AXIOM PROFILE: TEGULAR PANEL W/ AXIOM KNIFE EDGE IN SILVER SATIN (SA)
APC3	ARMSTRONGS CEILING SYSTEMS PATTERN: INVISACOUSTICS BASICS, FINISH: 1212H (WHITE) SIZE: 2'-0" X 4'-0" PROVIDE STEEL HAT CHANNEL AND NECESSARY HARDWARE FOR INSTALLATION
GYPSPUM BOARD	
GB	GYPSPUM BOARD, PAINTED
WALLS "W":	
PAINT	
P1	SHERWIN WILLIAMS, COLOR: 5HT036 ACCESSIBLE BEIGE
P2.B	SHERWIN WILLIAMS, COLOR: 5H6524 COMMODORE
P3.Y	SHERWIN WILLIAMS, COLOR: 5H676 BUTTERFIELD
P4.G	SHERWIN WILLIAMS, COLOR: 5HT019 GAUNTLET GRAY
P5.W	SHERWIN WILLIAMS, COLOR: 5HT006 EXTRA WHITE
P6.L	SHERWIN WILLIAMS, COLOR: 5HT010 DORIAN GRAY
P7	SHERWIN WILLIAMS, COLOR: 5H6250 TRICORN BLACK
P8	SHERWIN WILLIAMS, COLOR: 5HT038 TONY TAUPE NOTE: P1-X-E IN LEGEND TO BE EPOXY PAINT.
WALL TILE	
WT1	CROSSVILLE, PATTERN: SHADES COLOR: AV248 THUNDER UPS SIZE: 24" X 36" X 10.5MM
WT2	DALTILE, PATTERN: REFLECTIONS IN GLASS COLOR: COBALT BLUE *BACK PAINT TILE, SO MORTAR DOES NOT SHOW THROUGH SIZE: 12" X 24"
WT3	CROSSVILLE, PATTERN: COLOR BOX COLOR: A105 YELLOW BRICK ROAD SIZE: 6' X 12"
WT4	CROSSVILLE, PATTERN: SHADES COLOR: AV241 FROST HON SIZE: 12" X 12" SHEET X 10.5mm 5E33/1013/14MS ALL WHITE TILES MOSAIC COLOR: *NOT BLEND SIZE: 1" X 3" X 5/16"
WALL PATTERNING	
WP1	(CORRIDOR) CONSISTS OF PAINT (P1) AS FIELD, W/ ACCENT STRIPE (P4.G) & ACCENT BAND OF (P2.B) & (P3.Y). REFER TO 21/A1400 FOR DETAILS. *ACCENT WORDS ARE IN SIGNAGE SCOPE.
WP2	(CORRIDORS & LOCKER RMS) CONSISTS OF PAINT (P1) AS FIELD, W/ ACCENT STRIPE OF (P2.B). REFER TO 43/A1400 FOR DETAILS. *FOR ALL TLT RMS & SHOWERS AREAS TO BE IN EPOXY.
WP3	(GYM) CONSISTS OF PAINT (P4.G) AS FIELD, W/ ACCENT STRIPE OF (P3.Y), (P5.W), (P6.L). REFER TO 41/A1401 & 11-31/A1402 FOR DETAILS.
WP4	(CONCESSION) CONSISTS OF WALL TILE (WT1) AS FIELD, W/ ACCENTS OF (WT2), (WT3), (WT4). ESTABLISH SCAFFLTER GRADE AT ALL EDGES AND TILE THE INSIDE OF OPENINGS. GROUT COLOR: TBD. REFER TO 11/A1400 & 21/A1400 FOR DETAILS.
FABRIC WRAPPED PANELS	
FWP1	SOUND CONCEPTS; ABSORPTIVE THICKNESS: 2", SIZE: 4'-0" X 7'-4" F.V. ALL PANELS AROUND MECHANICAL SHROUDS EDGE DETAIL: SQUARE EDGE, MOUNTING: Z-CLIPS PANEL FINISH: GUILDFORD OF MAIN SYNOPSIS 2186, COLOR: BLUE MARINE 1214
WALL PANELS	
WPL1	(3) 3/4" MDF PANELS GLAD W/ PLASTIC LAMINATE FACE FINISH: (PL1) 1054-18 WILD CHERRY & (PL3) DECOMETAL 2032 BRUSHED PEPPER SIDES: (PL1) 1054-18 WILD CHERRY SIZE: 4'-6" X 8'-0" H -- CONCEALED FASTENING W/ PLAM, (PL1) PLUGS FACE LAMINATES MUST BE WATERJET CUT BY APPROVED WATERJET COMPANY. RE: 11/A1400 FOR DETAILS
FLOORING "F":	
CARPET TILE	
CA1	PATGRAFT; PATTERN: LIQUID COLOR: 00448 BLUEPRINT SIZE: 24" X 24" INSTALLATION METHOD: 1/4 TURN W/LOK*DOTS (CORRIDORS)
CA2	SHAW PATTERN: PATH TILE 51034 COLOR: NAVY 34485, SIZE: 24X24 INSTALLATION METHOD: 1/4 TURN W/ FULL SPREAD ADHESIVE
FLOOR TILE	
FT1	CROSSVILLE, PATTERN: COLOR BLOX SIZES: 18" X 18" X 3/8" *PROVIDE 6X6 IN SHOWER AREA ONLY - TLT'S 106, 104, 115, 111 COLOR: A180 SEA OTTER GROUT COLOR TO BE: CBP #541 WALNUT
FT2	DALTILE, PATTERN: VERANDA SOLIDS COLOR: P551 SAPPHIRE SIZE: 18" X 20" X 3/8"
FT3	CROSSVILLE, PATTERN: COLOR BLOX COLOR: A105 YELLOW BRICK ROAD SIZE: 6' X 6" X 3/8"

CODE	DESCRIPTION
LUXURY VINYL TILE	
LV1	ARMSTRONGS NATURAL CREATIONS MYSTIX COLOR: MIXER-CLUB SODA NA614 SIZE: 18" X 18" X 1.25" THICK
LV2	ARMSTRONGS NATURAL CREATIONS MYSTIX (BLUE) COLOR: MIXER-NA623 MIXER BLUE HAWAIIAN SIZE: 18" X 18" X 1.25" THICK
LV3	ARMSTRONGS NATURAL CREATIONS MYSTIX (YELLOW) COLOR: MIXER-NA616 MIXER PINEAPPLE JUICE SIZE: 6' X 36" X 1.25" THICK
LV4	ARMSTRONGS NATURAL CREATIONS MYSTIX (WHITE) COLOR: NA610 MIXER PINK COLADA SIZE: 6' X 36" X 1.25" THICK
LV5	ARMSTRONGS NATURAL CREATIONS MYSTIX (BLACK) COLOR: MIXER-NA615 PARSIA JAVA SIZE: 18" X 36" X 1.25" THICK
LV6	ARMSTRONGS NATURAL CREATIONS MYSTIX (GRAY) COLOR: MIXER-NA615 ON THE ROCKS SIZE: 18" X 18" X 1.25" THICK
SEALED CONCRETE	
SC	SEALED CONCRETE
RUBBER TILE	
RAF1	MONDO SPORT IMPACT, 6'-1" ROLL GOOD THICKNESS: 6 MM (1/4") COLOR: 136 BROWN
RAF2	MONDO SPORT IMPACT, 6'-1" ROLL GOOD THICKNESS: 6 MM (1/4") COLOR: 154 GOLD
RAF3	MONDO SPORT IMPACT, 6'-1" ROLL GOOD THICKNESS: 6 MM (1/4") COLOR: 073 DARK BLUE
RUBBER FLOOR TILE	
RT1	JONSONITE RUBBER FLOOR TILE PATTERN: BAMBOO (BMT) SIZE: 24" X 24" X 1/8" THICK COLOR: 40 BLACK
RT2	JONSONITE RUBBER FLOORING, CUSTOM FIELD COLOR: 55 SILVER GRAY; TEXTURE: HAMMERED LARGE CHIP ACCENTS: 18 NAVY BLUE, 21 MOON ROCK MEDIUM CHIP ACCENTS: TBS 506SPOT SIZE: 24" X 24" X 1/8" THICK
RS1	JONSONITE RUBBER STAIR TREAD WITH INTEGRATED RISER PATTERN: BAMBOO (BMT) COLOR: 40 BLACK
FLOOR PATTERN	
FP1	(CORRIDOR) CONSISTS OF LV1 AS FIELD WITH ACCENTS OF LV2 THRU LV6. RE: FLOOR PATTERN PLANS FOR LAYOUT.
FP2	(LOCKER RMS) CONSISTS OF RAF1 AS FIELD WITH ACCENTS OF RAF2 & RAF3.
FP3	(GROUP TLTS) CONSISTS OF FT1 AS FIELD WITH ACCENTS OF FT2 THRU FT3. GROUT COLOR TO BE: CBP #541 WALNUT
WOOD FLOORING	
WD1	RE: SPECS SECTION 094666 FOR WOOD COURT FLOORING INFORMATION
WALL BASE "B":	
WB1	JONSONITE 4" TOE COVE BASE COLOR: 40 BLACK, CONTINUOUS ROLL
WB2	VENTED COVE BASE TO MATCH EXISTING IN HEIGHT COLOR: 40 BLACK, CONTINUOUS ROLL
WB3	JONSONITE RUBBER NOSING VDL-XX-50 COLOR: 40 BLACK
WB4	CROSSVILLE, COLOR BLOX SIZE: 6X12 COVE BASE COLOR: A180 SEA OTTER
MILLWORK FINISHES "M":	
ML1	HILSONART, 1054-18 WILD CHERRY *PROVIDE HILSONART 1054 3 MM PVC EDGING ON EDGES OF DOORS AND/OR DRAWERS WHERE FL2 IS SCHEDULED.
ML2	HILSONART, 4886-38 PEARL SOAPSTONE *PROVIDE HILSONART 4886 3 MM PVC EDGING ON EDGES OF COUNTERTOPS & BACKSPLASHES WHERE FL2 IS SCHEDULED.
ML3	FORMICA DECOMETAL, 2032 BRUSHED PEPPER *GRAPHIC LOGO WATERJET CUT.
ST1	STAIN TO MATCH HILSONART 1054-60 WILD CHERRY

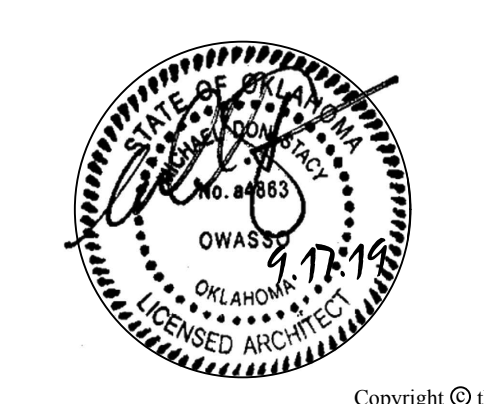
REVISION	DESCRIPTION
1	REFER TO INTERIOR ELEVATION SHEETS FOR LOCATIONS OF ACCENT PANELS.
2	REFER TO FLOOR PATTERN SHEETS FOR LOCATIONS OF ACCENT FLOORING.
3	REFER TO RCP FOR LOCATION AND FINISH OF GYPSPUM BOARD, ACOUSTICAL PANEL, CEILING, DECORATIVE CEILING, AND EXPOSED STRUCTURE.
4	REFER TO A111 FOR COURT GRAPHICS.
5	REFER TO INTERIOR ELEVATIONS FOR LOCATIONS OF FABRIC WRAPPED PANELS.
6	EXPOSED CONCRETE TS TO BE PAINTED (P5-W). DUCTWORK TO BE PAINTED (P4-G).
7	PROVIDE WM SYSTEMS, SERIES SP, AT TRANSITIONS FROM WOOD FLOORING TO ADJACENT FLOORING MATERIAL. AN AT 6" X 6" EXPANSION JOINTS. TRANSITIONS OCCUR AT CENTERLINE OF DOOR.
8	MILLWORK IS PART OF THE SCIENCE LAB CASEWORK SPECIFICATIONS. RE: SPEC FOR DESIGNATIONS OF NUMBERS ON SHEET A101. DEMO TABLES ARE ALSO PART OF SCIENCE CASEWORK.
9	USE (FT1 6X6) IN SHOWER AREA ONLY, RE: A111.
10	EXISTING HOLLOW METAL DOOR FRAMES TO BE PAINTED (P1) ON BOTH SIDES OF DOOR.

GENERAL REMARKS

1	AN INDEPENDENT THIRD PARTY MUST PERFORM ALL ALKALINITY, MOISTURE AND ADHESION TESTING AS REQUIRED BY EACH FLOORING MATERIAL MANUFACTURER PRIOR TO FLOORING INSTALLATION. REFER TO SPECIFICATION 014000 QUALITY REQUIREMENTS SECTION 1.1 QUALITY CONTROL FOR ADDITIONAL INFORMATION.
2	WASH BASINS TO BE BRADLEY TERREN COLOR: COBBLESTONE (SILVER M5). AWARDED BIDDER SHALL MATCH SPECIFIED COLOR IF ARCHITECT DOES NOT FIND MATERIAL OF COMPARABLE COLOR IN STANDARD LINE.
3	ALL INTERIOR HOLLOW METAL DOORS, DOOR FRAMES, AND WINDOW FRAMES, AND HAND RAILS TO BE PAINTED BLACK (P1).
4	EXTEND EPOXY PAINT IN ALL JANITORS, ELEC, AND MECHANICAL ROOMS TO 10'-0".
5	REFER TO RCP'S FOR PAINT COLORS AT SOFFITS.
6	WOOD DOORS STAINED TO MATCH (PL1). REFER TO DOOR SCHEDULE IN A600 SHEET SERIES FOR SCHEDULED STAIN GRAY DOORS.
7	ALL WINDOW SILLS SHOWN IN ARCHITECTURAL WINDOW DETAILS SHALL BE 1/4" SOLID SURFACE WITH SQUARE EDGES & 2" RETURN DOWN. HILSONART, COLOR: 1514G FROSTY WHITE M346E.
8	ADDITIONAL DIMENSIONS AND/OR ELECTRONIC FILES WILL BE SUPPLIED TO SUCCESSFUL FLOORING SUBCONTRACTOR AND AFC SUBCONTRACTOR UPON REQUEST.
9	ALL OUTSIDE CORNERS WHERE WALL TILE IS SCHEDULED SHALL RECEIVE THE FOLLOWING SCULPTER METAL CORNER GUARDS: 90 DEGREE OUTSIDE CORNER, QUAD-90 10'-0" LENGTHS THE FULL HEIGHT OF THE WALL PATTERN PER SPECIFICATION, 45 DEGREE OUTSIDE CORNER: JOLLY 10'-0" LENGTHS PER SPECIFICATION. ALL OUTSIDE EDGES OF WALL TILE WHERE WALL TILE DOES NOT CONTINUE SHALL RECEIVE JOLLY PER SPECIFICATION. ALL RADIUS EDGES WHERE TILE IS APPLIED SHALL RECEIVE SCHEME PER SPECIFICATION.

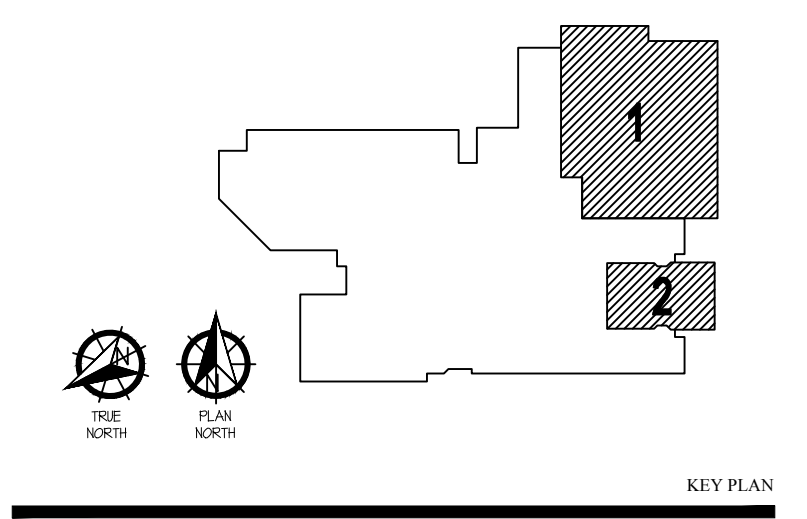
GENERAL MILLWORK REMARKS

1	ALL STANDARD CASEWORK IS BASED UPON STEVEN ADVANTAGE ARCHITECTURAL CASEWORK.
2	MODEL NUMBERS ARE LISTED ON CASEWORK ELEVATIONS TO ESTABLISH A MINIMUM DESIGN BASIS. THE DIMENSIONS SHOWN (WHICH) MAY DIFFER FROM THE MANUFACTURER'S STANDARD DIMENSIONS FOR THE LISTED MODEL NUMBERS.
3	PROVIDE SIDE, TOP, AND BOTTOM FILLER PANELS AS REQUIRED TO COMPLETE MILLWORK AS INDICATED ON THE PLANS AND INTERIOR ELEVATIONS.
4	BLIND CABINETS, AT CORNERS, ARE TO BE LEFT OR RIGHT HAND AS INDICATED ON THE PLANS AND INTERIOR ELEVATIONS.
5	ALL CASEWORK TO HAVE PLASTIC LAMINATE ON ALL EXPOSED SURFACES. INTERIOR OF CLOSED CASEWORK TO BE MELAMINE.
6	PROVIDE PLASTIC LAMINATE FINISHED END PANELS AT ALL EXPOSED CASEWORK ENDS (INCLUDING KNEE SPACES).
7	FIELD VERIFY ALL DIMENSIONS PRIOR TO FABRICATION AND INSTALLATION OF CASEWORK, TYPICAL.
8	PROVIDE KEYED LOCKS AT ALL CABINET DOORS AND DRAWERS AS INDICATED ON INTERIOR ELEVATIONS.
9	ALL KNEE SPACE UNITS TO RECEIVE GROMMETS CENTERED WITHIN KNEE SPACE AND 3" FROM BACKSPLASH.
10	ALL SHELVES SHALL BE ADJUSTABLE U.O.N. SHELVES OVER 36" IN LENGTH TO BE 1" THICK.
11	ALL STANDARD BASE CABINETS ARE 24" DEEP U.O.N. AND ALL STANDARD UPPER CABINETS ARE 14" DEEP U.O.N.
12	FL2 AS INDICATED IN FINISH TAG, TO BE USED ON COUNTERTOPS & BACKSPLASHES AND PL1 TO BE USED ON ALL VERTICAL SURFACES UNLESS OTHERWISE NOTED.
13	THE BOOKCASE/CUBBY/UPPER CABINET MILLWORK COMBINATION IN EACH CLASSROOM IS 18" DEEP.



JUNIOR HIGH SHELTER ADDITION

PRYOR PUBLIC SCHOOLS
PRYOR, OK 2019



REVISION	DESCRIPTION
1	ALL STANDARD CASEWORK IS BASED UPON STEVEN ADVANTAGE ARCHITECTURAL CASEWORK.
2	MODEL NUMBERS ARE LISTED ON CASEWORK ELEVATIONS TO ESTABLISH A MINIMUM DESIGN BASIS. THE DIMENSIONS SHOWN (WHICH) MAY DIFFER FROM THE MANUFACTURER'S STANDARD DIMENSIONS FOR THE LISTED MODEL NUMBERS.
3	PROVIDE SIDE, TOP, AND BOTTOM FILLER PANELS AS REQUIRED TO COMPLETE MILLWORK AS INDICATED ON THE PLANS AND INTERIOR ELEVATIONS.
4	BLIND CABINETS, AT CORNERS, ARE TO BE LEFT OR RIGHT HAND AS INDICATED ON THE PLANS AND INTERIOR ELEVATIONS.
5	ALL CASEWORK TO HAVE PLASTIC LAMINATE ON ALL EXPOSED SURFACES. INTERIOR OF CLOSED CASEWORK TO BE MELAMINE.
6	PROVIDE PLASTIC LAMINATE FINISHED END PANELS AT ALL EXPOSED CASEWORK ENDS (INCLUDING KNEE SPACES).
7	FIELD VERIFY ALL DIMENSIONS PRIOR TO FABRICATION AND INSTALLATION OF CASEWORK, TYPICAL.
8	PROVIDE KEYED LOCKS AT ALL CABINET DOORS AND DRAWERS AS INDICATED ON INTERIOR ELEVATIONS.
9	ALL KNEE SPACE UNITS TO RECEIVE GROMMETS CENTERED WITHIN KNEE SPACE AND 3" FROM BACKSPLASH.
10	ALL SHELVES SHALL BE ADJUSTABLE U.O.N. SHELVES OVER 36" IN LENGTH TO BE 1" THICK.
11	ALL STANDARD BASE CABINETS ARE 24" DEEP U.O.N. AND ALL STANDARD UPPER CABINETS ARE 14" DEEP U.O.N.
12	FL2 AS INDICATED IN FINISH TAG, TO BE USED ON COUNTERTOPS & BACKSPLASHES AND PL1 TO BE USED ON ALL VERTICAL SURFACES UNLESS OTHERWISE NOTED.
13	THE BOOKCASE/CUBBY/UPPER CABINET MILLWORK COMBINATION IN EACH CLASSROOM IS 18" DEEP.

FINISH LEGEND & SPECIALTIES SCHEDULE

A1700

These drawings are subject to copyright protection as an "architectural work" under Section 102 of the Copyright Act, 17 U.S.C., as amended on December 1, 1990. The work includes the overall form as well as the arrangement and composition of spaces and elements in the design. These documents are not to be reproduced without the written consent of the stacy group.